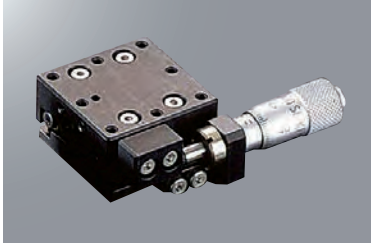
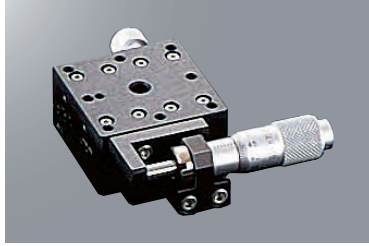


X-axis Cross Roller Guide Stage □25/□40/□60: HB11-25/40/60

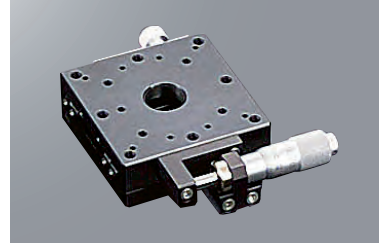
HB11-25CN



HB11-40C



HB11-60C



RoHS

Optional sample *The photo is for illustrative purpose only.
Please refer to optional introduction pages for details. [OP.2-009](#)~

Precise positioning
Coarse-fine micrometer



※Not available □25.

Space-saving · Prevention error
Feeding screw hexagonal wrench operation



※Image is for □25.

[Features]

- Table size □25 · 40 · 60mm cross roller guide stage.
- Main body is light weight by aluminum-made.
- Available each option.

1 Model

Option code

HB11-25CRN □
HB11-□CR □

1 2 3 4

Select the option code as below.

1 Stage table size

| | |
|----|---------|
| 25 | 25×25mm |
| 40 | 40×40mm |
| 60 | 60×60mm |

| Specification | 2 Feeding position | | 3 Operating position | | | 4 Feeding type (Not available feeding position B/D when selecting) | | | |
|---------------|---------------------|------------------------|----------------------|------------------------------|--------------------------------|--|--------------------------------|---------------------------------|---------------------------------------|
| | Standard micrometer | Coarse-fine micrometer | Standard | Opposite attached micrometer | Vertically attached micrometer | Standard micrometer (P=0.5mm) | Feeding screw (Knob) (P=0.5mm) | Feeding screw (Knob) (P=0.25mm) | Feeding screw (Hex wrench) (P=0.25mm) |
| A | | | | | | | | | |
| B | | | | | | | | | |
| C | | | | | | | | | |
| D | | | | | | | | | |
| Code | A/C Center/Side | B/D Center/Side | Blank | R | Z | Blank | 1 | FP | FH |

※Not available □25 for B or D

| SPEC | | | | | | |
|-------------------------------------|-----------------------------------|------------|----------------|-----------|----------------|-----------|
| Model | HB11-25AN | HB11-25CN | HB11-40A | HB11-40C | HB11-60A | HB11-60C |
| (Opposite hand) | HB11-25ARN | HB11-25CRN | HB11-40AR | HB11-40CR | HB11-60AR | HB11-60CR |
| Feeding Type | Standard micrometer | | | | | |
| Feeding position | Center | Side | Center | Side | Center | Side |
| Minimum reading of micrometer | 10μm/Scale | | | | | |
| Stage table size | 25×25mm | | 40×40mm | | 60×60mm | |
| Travel distance | ±3.2mm | | ±6.5mm | | | |
| Guide | Cross roller guide | | | | | |
| Load capacity | 1.0kgf [9.8N] | | 2.0kgf [19.6N] | | 5.0kgf [49.0N] | |
| Travel accuracy | Straightness | | | | | |
| | Within 30" | | | | | |
| | Within 10μm | | | | | |
| Allowable load for moment | Pitching | | | | | |
| | Within 30" | | | | | |
| | Within 15" | | | | | |
| Moment rigidity | Pitch | | 2.7N · m | | 5.2N · m | |
| | Yaw | | 2.2N · m | | 4.3N · m | |
| | Roll | | 2.0N · m | | 5.5N · m | |
| Parallelism | Pitch | | 0.38"/N · cm | | 0.12"/N · cm | |
| | Yaw | | 0.42"/N · cm | | 0.11"/N · cm | |
| | Roll | | 0.28"/N · cm | | 0.07"/N · cm | |
| Parallellism | Within 30μm | | | | | |
| Motion parallelism | Within 10μm | | | | | |
| Weight | 0.04kg | | 0.14kg | | 0.25kg | |
| Main material—Surface finishing | Aluminum—Black alumite processing | | | | | |
| Provided screws (Hex socket screws) | 4 of M2—6 | | 4 of M3—6 | | 4 of M4—6 | |

X

XY

Z

Horizontal Z

XZ

Horizontal XZ

XYZ

Horizontal XYZ

Goniometer

Rotary

Unit

Accessories

Linear Ball

Cross Roller

Dovetail

□25

□30

□40

□50

□60

□70

□80

□100

□120

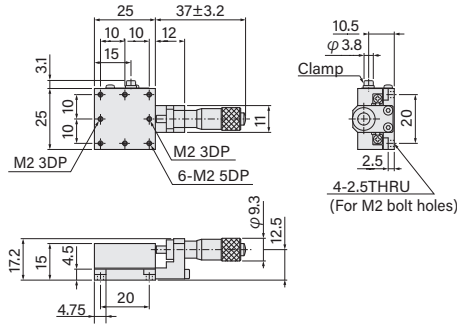
Other

2

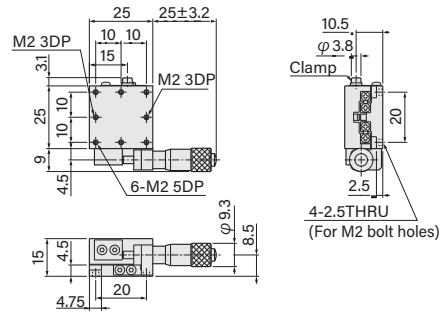
063

Dimensional outline drawings

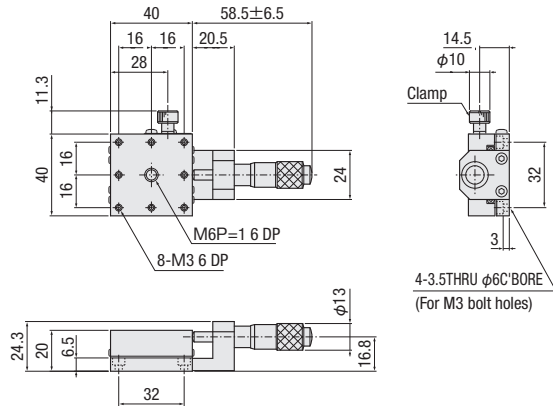
HB11-25AN



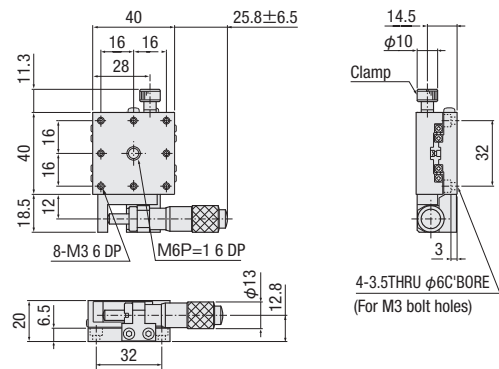
HB11-25CN



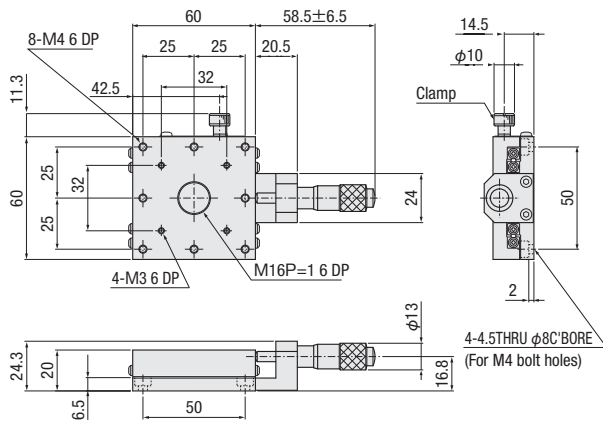
HB11-40A



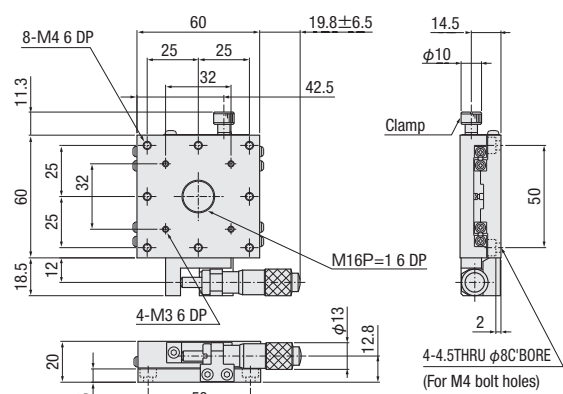
HB11-40C



HB11-60A



HB11-60C



Manual linear stage

X

XY

Z

Horizontal Z

XZ

Horizontal XZ

XYZ

Horizontal XYZ

Goniometer

Rotary

Unit

Accessories

Linear Ball

Cross Roller

Dovetail

25

30

40

50

60

70

80

100

120

Other

2

064