

Motorized Large Precision Gimbal Mirror Holder



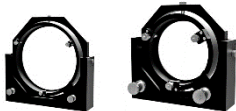
Gimbal-type motorized mirror holder for mirrors of 150 mm dia. or larger.
Tilt adjustment of large mirrors can be done by remote control.

- The mirror is fixed at the tip by three plastic screws from the mirror insertion surface, making it possible to accommodate mirrors of various thicknesses.
- A coarse adjustment mechanism is provided on the axis in the direction of the tilt, allowing the mirror to be clamped at any 360° position.
- The mirror mount is compatible with both metric and inch standards with similar mirror sizes, and can be easily switched with the included pin.



Guide

- Two D15D15A cables (D15D15A-CA-3) must be purchased separately for connection to the controller.
- Parts for fixing the cable are included. Use as necessary.
- If vertical mounting is desired, please contact our sales representative.
- Manual large precision gimbal mirror holders (MHD series) are also available.



- We can also manufacture automatic mirror holders in your specified size. Please contact our sales department.

Attention

- When replacing a mirror, use a wrench to remove the mirror holder bracket, and then insert the mirror.
- Do not over-tighten the plastic screws on the mirror holder, as this may distort the mirror and reduce surface accuracy.
- When loosening the coarse clamp portion, hold the mirror mount firmly by hand.

Motorized Large Precision Gimbal Mirror Holder MHDM Series Lineup List

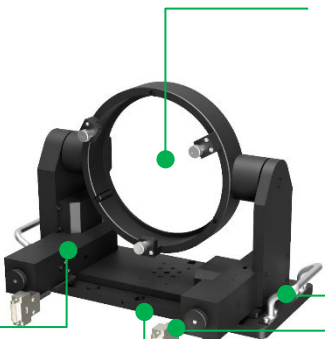
Part Number	Compatible Optics Diameter	Compatible Optics Thickness	Optical Axis Height	Load Capacity	Primary material	Finish	Weight
MHDM-150	φ150mm、φ152.4mm	5 - 28mm	160mm	9.8N(1.0kgf)	Aluminum	Black anodized	11kg
MHDM-200	φ200mm、φ203.2mm	20 - 44mm	180mm	36.3N(3.7kgf)	Aluminum	Black anodized	13.5kg
MHDM-254	φ250mm、φ254mm	40 - 54mm	210mm	71.5N(7.3kgf)	Aluminum	Black anodized	15.5kg
MHDM-300	φ300mm、φ304.8mm	40 - 54mm	240mm	98.0N(10.0kgf)	Aluminum	Black anodized	17.5kg

MHDM Features at Glance

CE compliant

Compatible Optics Diameter can be selected from 4 types
(Compatible with both metric and inch standards)

Part Number	Compatible Optics Diameter	Compatible Optics Thickness
MHDM-150	φ150mm、φ152.4mm	5 - 28mm
MHDM-200	φ200mm、φ203.2mm	20 - 44mm
MHDM-254	φ250mm、φ254mm	40 - 54mm
MHDM-300	φ300mm、φ304.8mm	40 - 54mm



5-phase stepping motor 0.75A/phase
PK545-NBW (□42mm) adopt

Includes a handle for easy
installation and carrying



Parts for fixing cables are included.
Please use as needed.

Lower Plate 25mm, 1" (25.4mm) pitch for mounting



MHDM-150



MHDM-200



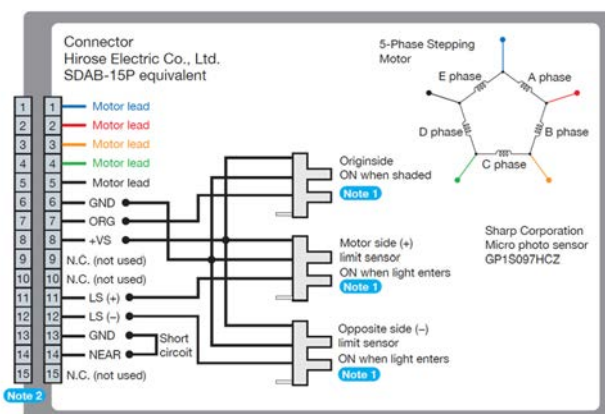
MHDM-254



MHDM-300

Specifications					
Part Number		MHDM-150	MHDM-200	MHDM-254	MHDM-300
Compatible Optics Diameter [mm]		φ150、φ152.4	φ200、φ203.2	φ250、φ254	φ300、φ304.8
Compatible Optics Thickness [mm]		5 - 28	20 - 44	40 - 54	40 - 54
Optical Axis Height [mm]		160	180	210	240
Adjustment Range Tilt [°]		±4.5	±3.8	±3.1	±2.7
Adjustment Range Rotation [°]		±4.5	±3.8	±3.1	±2.7
Primary material		Aluminum	Aluminum	Aluminum	Aluminum
Finish		Black anodized	Black anodized	Black anodized	Black anodized
Accuracy Specifications	Resolution (Full) ["]	3.6	3.1	2.5	2.2
	Resolution (Half) ["]	1.8	1.55	1.25	1.1
	MAX Speed [°/sec]	2	1.7	1.4	1.2
	Positional Repeatability [°]	0.05	0.05	0.05	0.05
	Lost Motion [°]	0.05	0.05	0.05	0.05
	Minimum Incremental Motion (reference) [mdeg]	0.5	0.5	0.5	0.5
	Load Capacity [N]	9.8 (1.0kgf)	36.3 (3.7kgf)	71.5 (7.3kgf)	98.0(10.0kgf)
Motor	Type	5-phase stepping motor 0.75 A/phase (Oriental Motor Co., Ltd.)			
	Motor Part Number	PK545-NBW (□42mm)			
	Step Angle	0.72°			
Weight [kg]		11	13.5	15.5	17.5

■ Connection Diagram



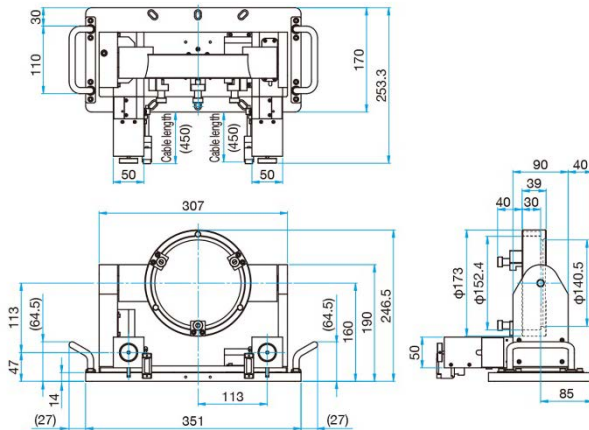
■ Compatible Controllers and Cables



Outline Drawing

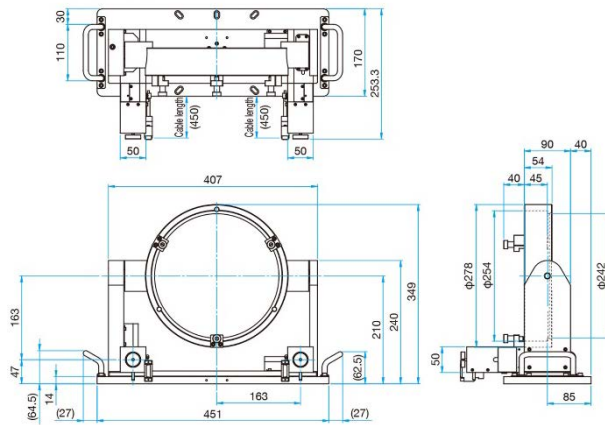
MHDM-150

- Hexagonal socket head cap screw M6x18...4 screws, M6x15...2 screws
Cable tie mount (CL8)...2 piece, Cable tie...2 screws



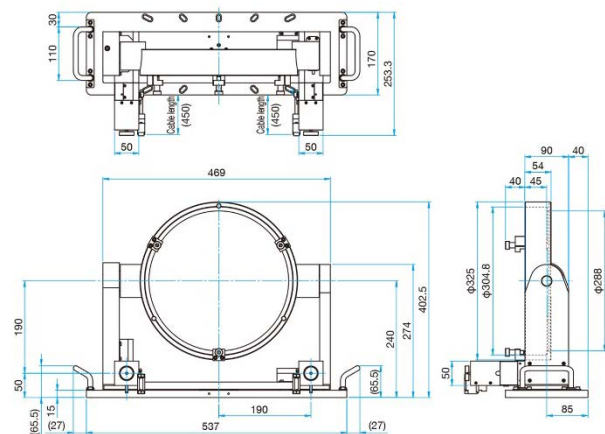
MHDM-254

- 6** Hexagonal socket head cap screw M6×18...4 screws, M6×15...2 screws
Cable tie mount (CL8)...2 piece, Cable tie...2 screws



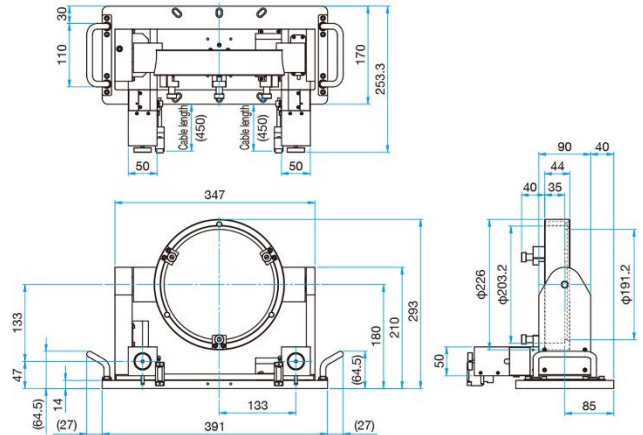
MHDM-300

- Hexagonal socket head cap screw M6×18...4 screws, M6×15...2 screws
Cable tie mount (CL8)...2 piece, Cable tie...2 screws

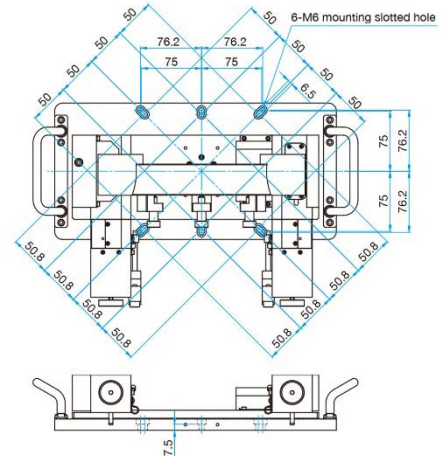


MHDM-200

- Hexagonal socket head cap screw M6×18...4 screws, M6×15...2 screws
Cable tie mount (CL8)...2 piece, Cable tie...2 screws



Dimensions of mounting area (common to MHDM-150, 200, 254)



Dimensions of mounting area (MHDM-300)

