

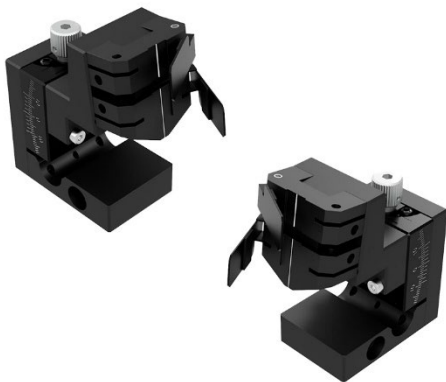
Fiber Holder for Grating Coupler

FHMF-GC8

RoHS

Fiber holder for grating coupler.
Attached to the holder mounting table of the fiber alignment unit.

- Various fiber holders can be vertically positioned for use in core alignment of grating fiber couplers. Available for bare fiber and fiber arrays.
- The angle can be adjusted in the range of 0° to 18° with a preset angle of 8°.
- Attachment to the fiber alignment unit is a one-touch operation using magnets for easy connection and disconnection.
- Can be attached to the DAU series fiber alignment unit.



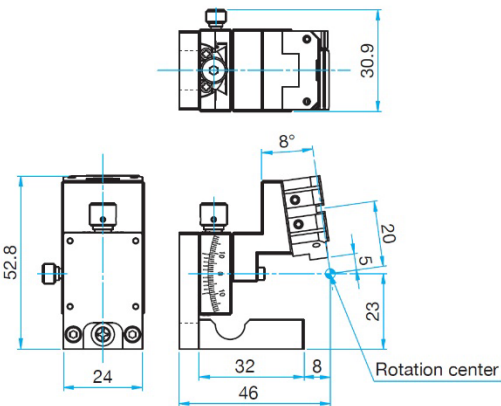
Guide

- Array holders are also available for grating couplers.
- We also have three jacket diameters of 250 μm, 400 μm, and 900 μm. All cladding diameters are specified at 125 μm.

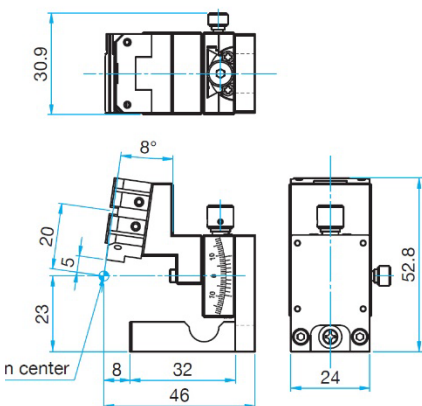


Outline Drawing

FHMF-125/***L-GC8



FHMF-125/***R-GC8



Specifications			
Part Number	FHMF-125/250L-GC8	FHMF-125/400L-GC8	FHMF-125/900L-GC8
(Opposite Model)	FHMF-125/250R-GC8	FHMF-125/400R-GC8	FHMF-125/900R-GC8
Cladding Diameter [μm]	125	125	125
Jacket Diameter [μm]	250	400	900
Preset Angle[°]	8	8	8
Adjustment Range[°]	0 - 18	0 - 18	0 - 18
Primary material	Aluminum	Aluminum	Aluminium
Finish	Black Anodized	Black Anodized	Black Anodized
Weight [kg]	0.12	0.12	0.12