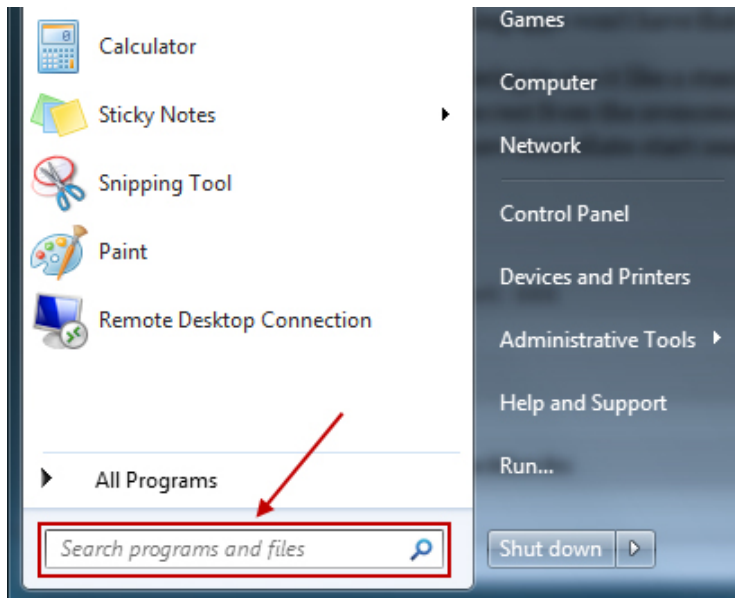


How to check the IP address of the PC

- In case of Windows 7

Select Search from Start Menu.



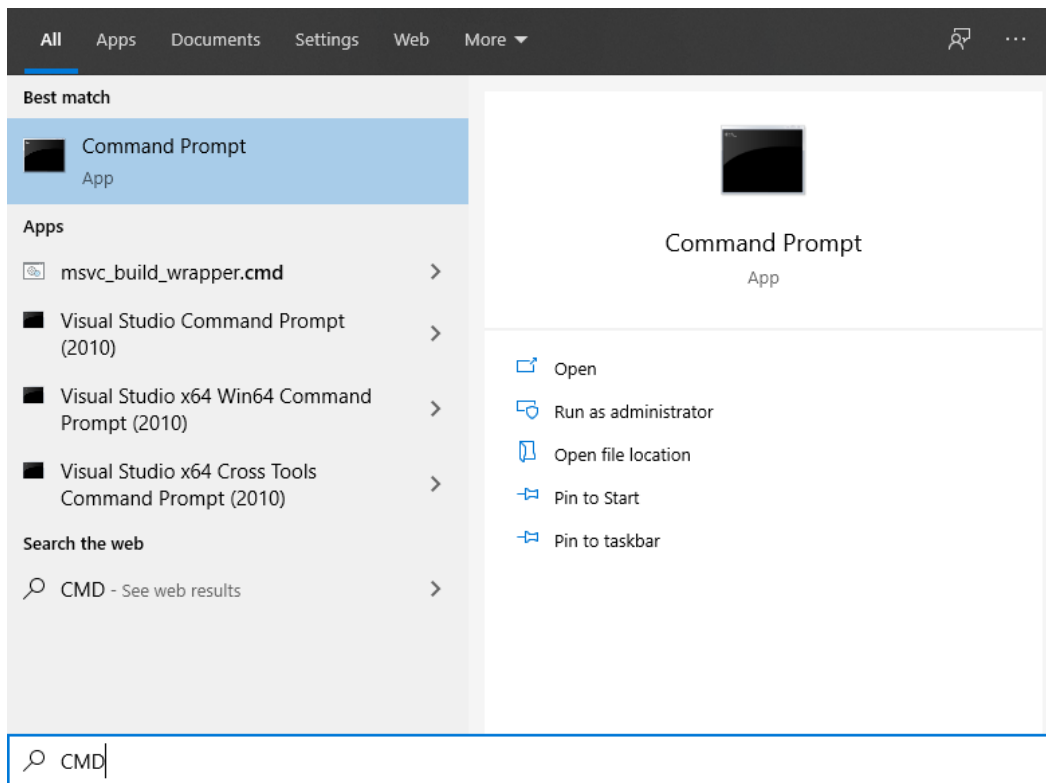
- In case of Windows 8

From Microsoft Menu select Search.



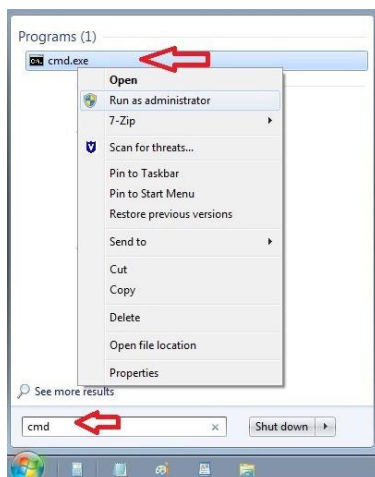
■ In case of Windows 10

From Microsoft Menu select Search.



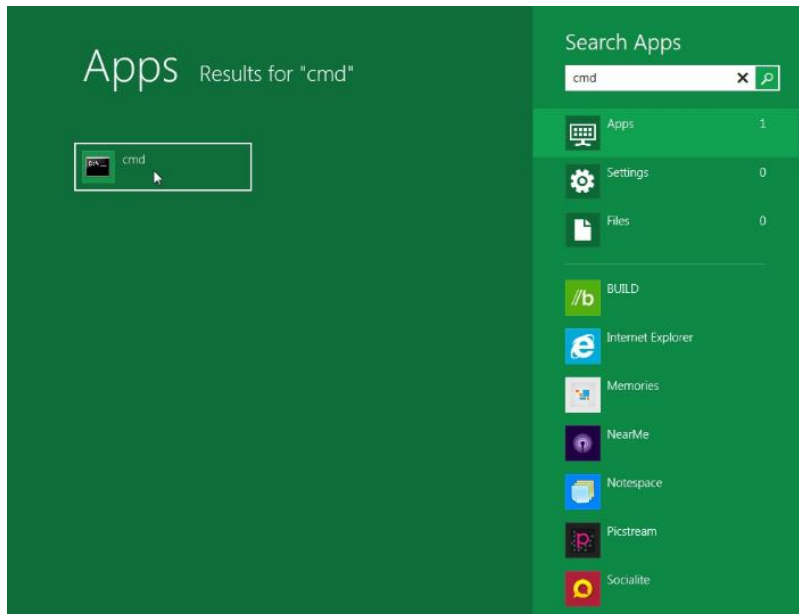
■ In case of Windows 7

Write CMD in Search from Start Menu and select run as administrator



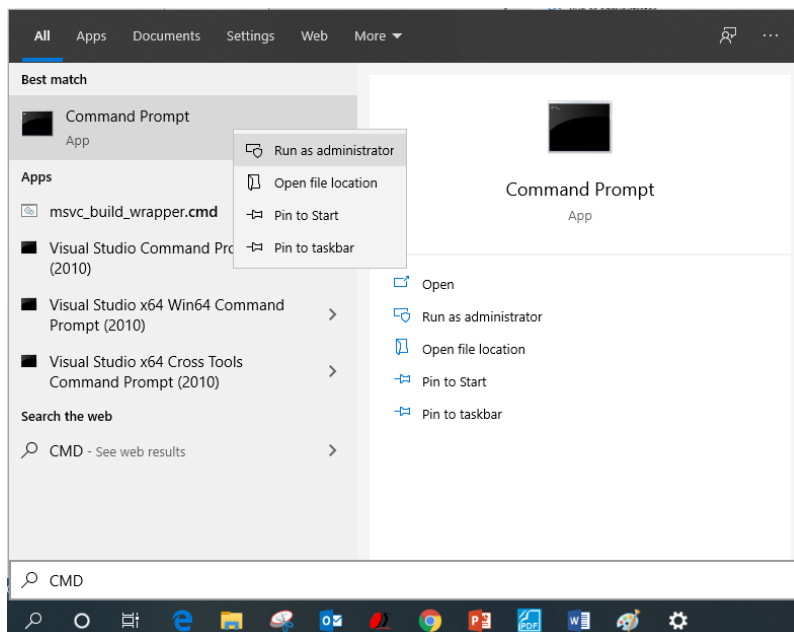
■ In case of Windows 8

Specify CMD in search menu and run it as administrator.

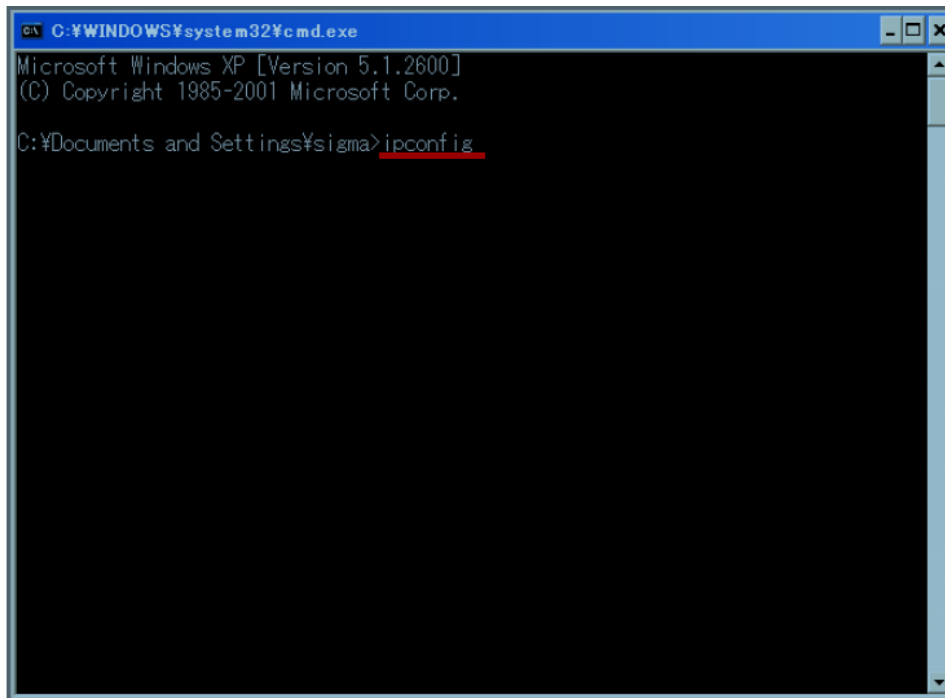


■ In case of Windows 10

Write click on CMD in search menu and run it as administrator.



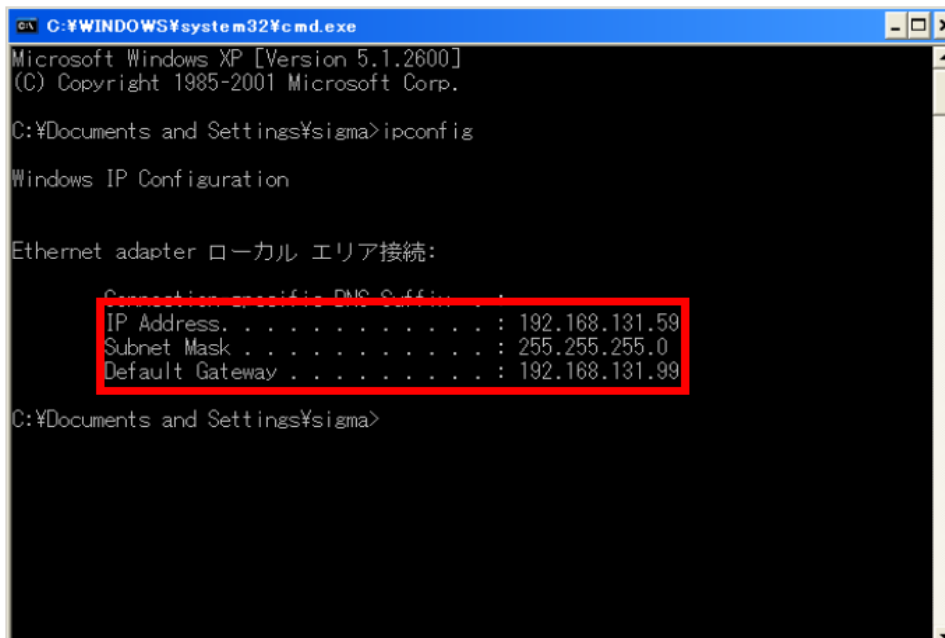
Once CMD window are displayed add command: [ipconfig] and press the enter key.



```
C:\WINDOWS\system32\cmd.exe
Microsoft Windows XP [Version 5.1.2600]
(C) Copyright 1985-2001 Microsoft Corp.

C:\Documents and Settings\sigma>ipconfig
```

The set IP address, subnet mask and default gateway are displayed as shown below.



```
C:\WINDOWS\system32\cmd.exe
Microsoft Windows XP [Version 5.1.2600]
(C) Copyright 1985-2001 Microsoft Corp.

C:\Documents and Settings\sigma>ipconfig

Windows IP Configuration

Ethernet adapter ローカル エリア接続:

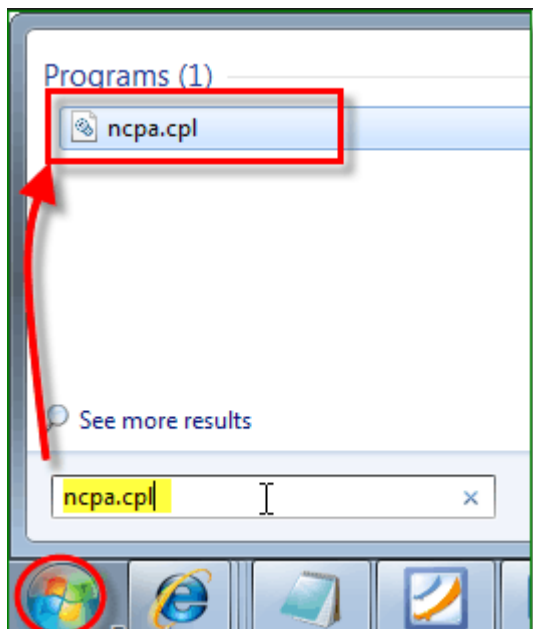
    Connection-specific DNS Suffix . . . : 
    IP Address. . . . . : 192.168.131.59
    Subnet Mask . . . . . : 255.255.255.0
    Default Gateway . . . . . : 192.168.131.99

C:\Documents and Settings\sigma>
```

Change according to the environment where HIT-M's LAN setting is used.

- In case of Windows 7

Write in search from Start Menu 「ncpa.cpl」 Command and click enter key.



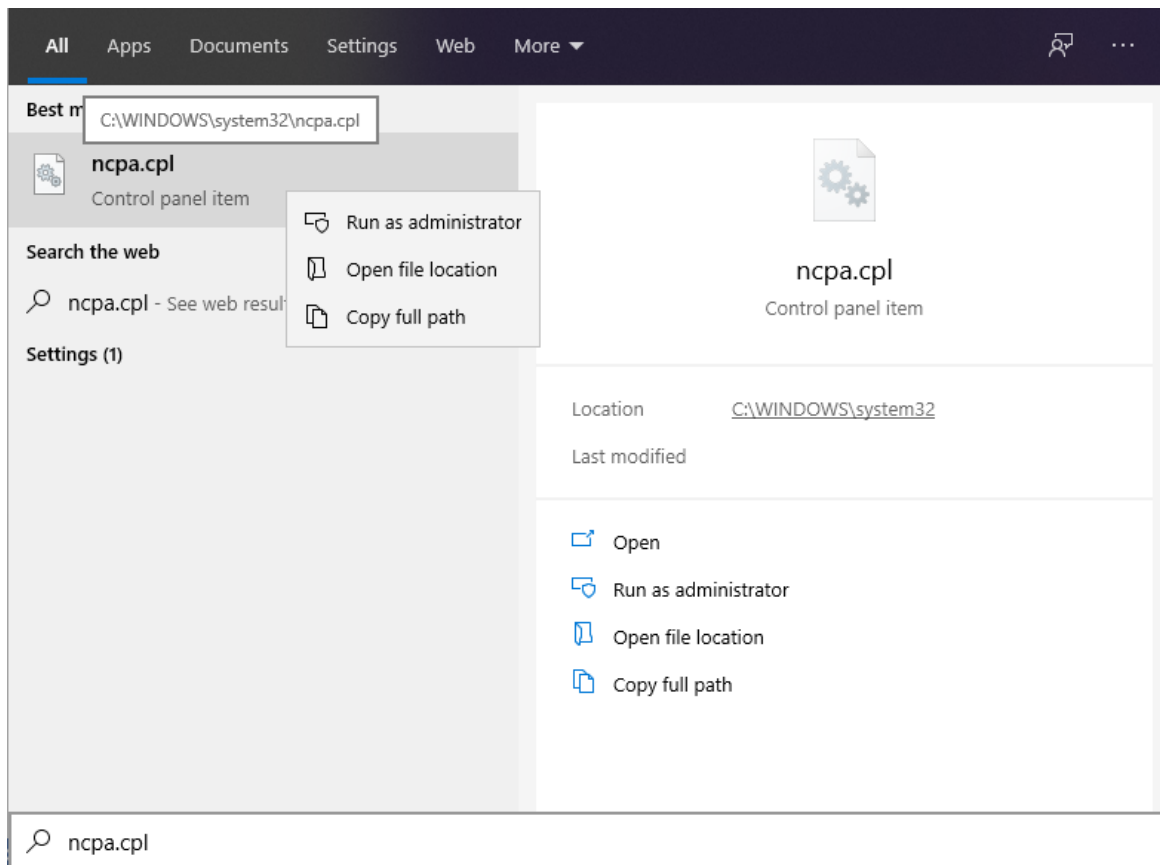
- In case of Windows 8

Enter the command "ncpa.cpl" on the search screen, click when "ncpa.cpl" is displayed

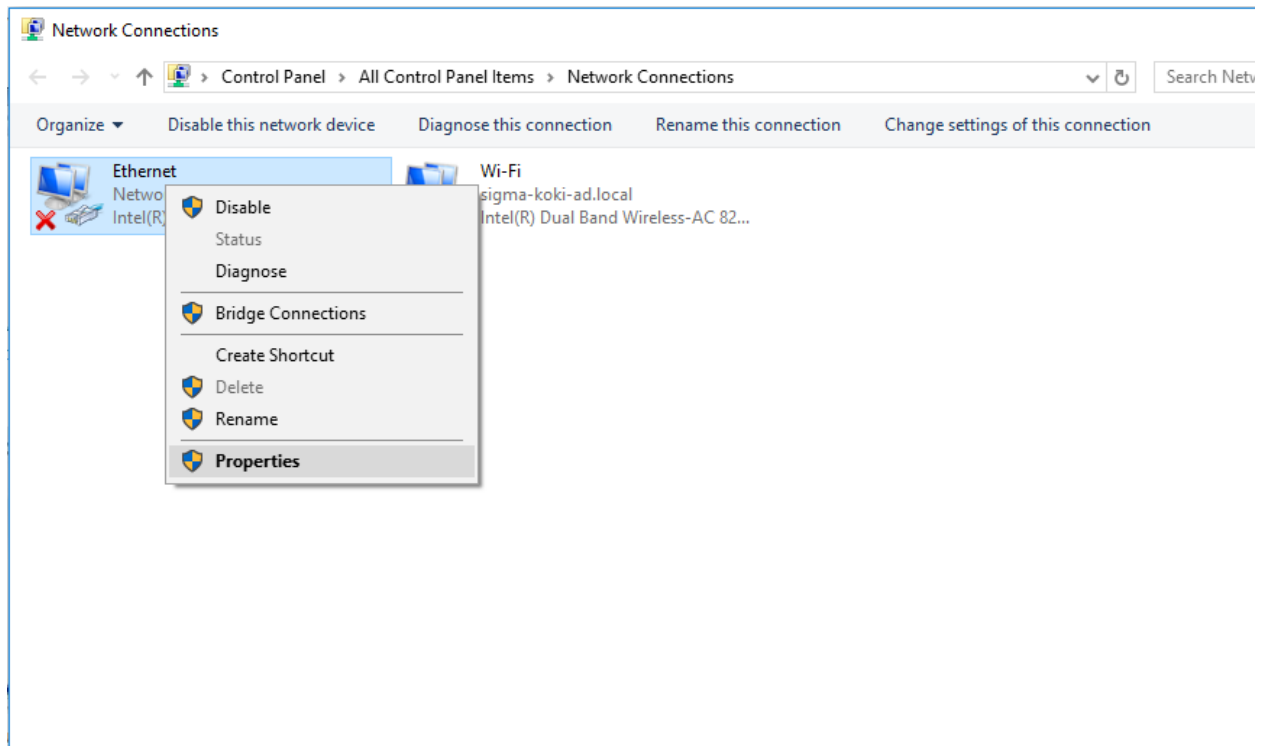


- In case of Windows 10

Enter the command "ncpa.cpl" on the search screen, click when "ncpa.cpl" is displayed



The network connection screen will be displayed.

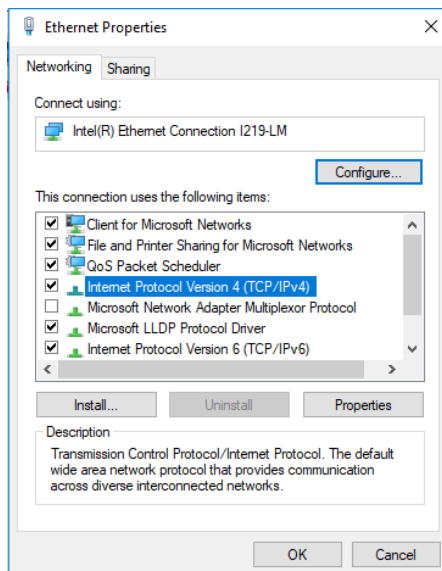


The network connection screen can be displayed by clicking on "Start Menu"> "Control Panel"> "Network Connection".

Or it can be displayed when you click on "Control Panel"> "Network and Internet connection"> "Network connection".

Select properties by right click on local connection as shown in screen above.

Select "Internet Protocol (TCP / IP)" and click "Properties".



Once the property screen of Internet Protocol (TCP / IP) is displayed, check "Use next IP address".

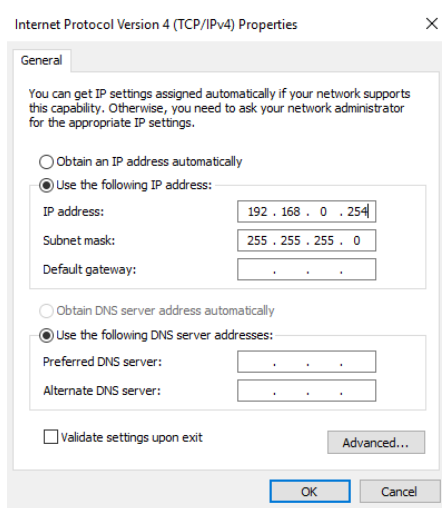
The factory LAN setting of HIT – M:

IP address: 192, 168, 0, 1

Subnet mask: 255, 255, 255, 0

As shown below, set the IP address and subnet mask of the personal computer accordingly to screen below. Set IP address different from HIT-M controller,

Example: 192.168.0. [1-255]



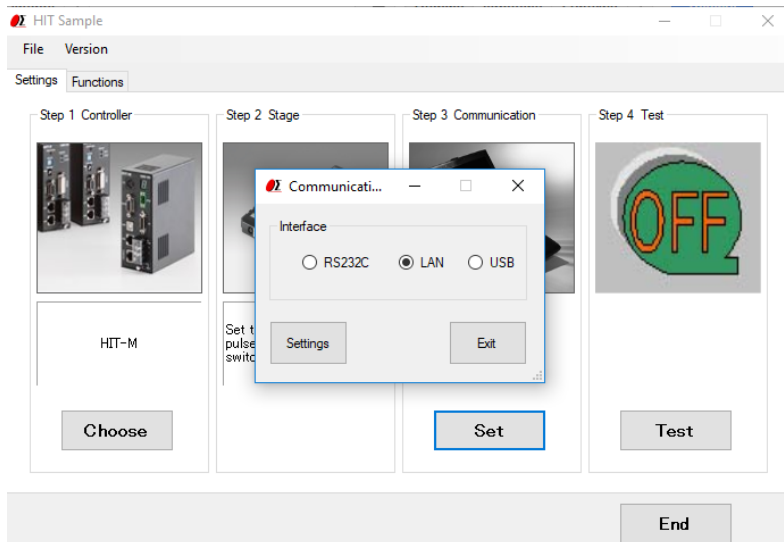
Please click "OK" to finish setting.

If you have already changed the HIT-M's LAN setting, change the setting of the PC according to that value.

Connect the PC and HIT - M, and turn on the power of the HIT - M.
Use the LAN cross cable to connect the personal computer and HIT - M.
When connecting the PC and HIT-M via the HUB, connect the HUB and HIT-M using the LAN straight cable.

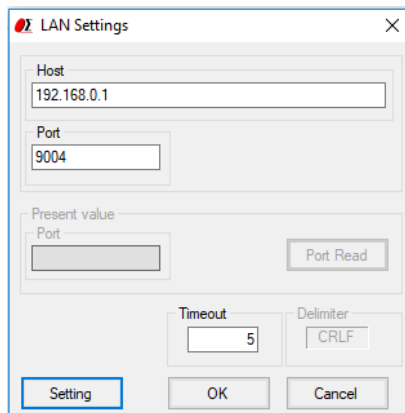
Procedure to connect:

Select LAN communication.



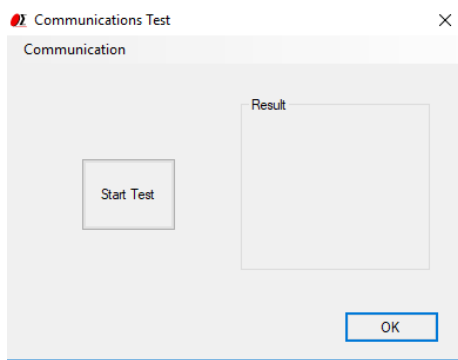
Click on communication setting.

Make sure that the host name is the current IP address of the HIT - M that is connected.
In case of HIT - M at factory shipment, the IP address is 192.168.0.1, so click "OK" to close the communication setting screen.

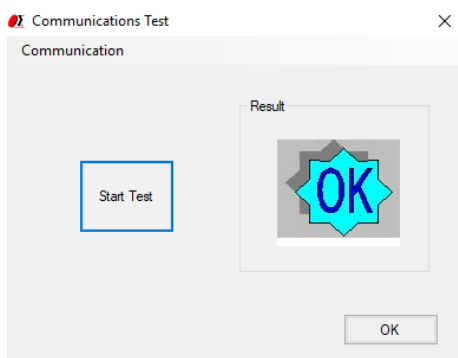


* If the LAN setting of HIT - M has already been changed, enter the IP address you changed previously and click "OK".

Select to Test menu in SGSample:



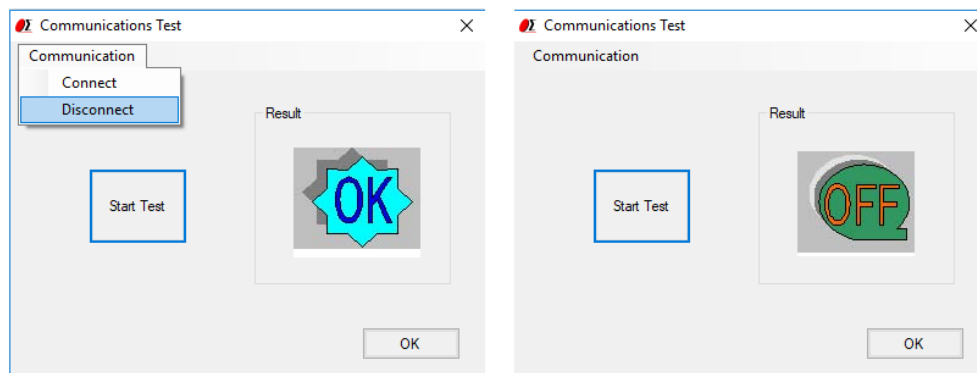
Select "Start Test" and screen below will be displayed.



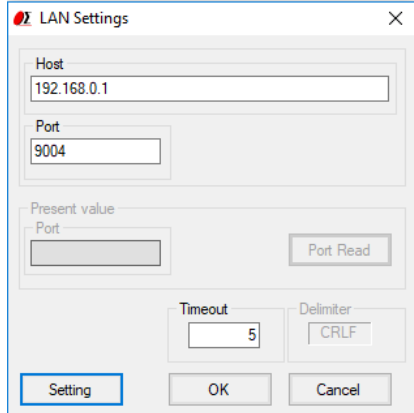
In order to change the LAN setting of HIT - M, disconnect the connection with the PC.

Clicking "Disconnect" as shown in the figure below until display "OFF" then the connection will be disconnected.

After the connection is disconnected, click "OK" to end the connection test.



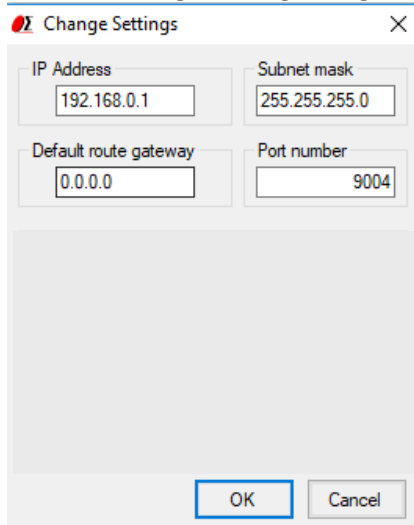
In case to change the communication setting:
Click "Setting".



The LAN Settings dialog box contains the following fields and controls:

- Host:** Text field with value 192.168.0.1
- Port:** Text field with value 9004
- Present value:** Section containing:
 - Port:** Empty text field
 - Port Read:** Button
- Timeout:** Text field with value 5
- Delimiter:** Text field with value CRLF
- Setting:** Button (highlighted with a blue border)
- OK:** Button
- Cancel:** Button

The LAN Change Setting dialog will display as follow.



The Change Settings dialog box contains the following fields and controls:

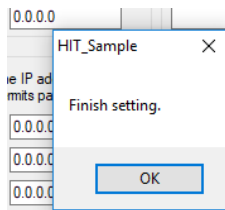
- IP Address:** Text field with value 192.168.0.1
- Subnet mask:** Text field with value 255.255.255.0
- Default route gateway:** Text field with value 0.0.0.0
- Port number:** Text field with value 9004
- OK:** Button (highlighted with a blue border)
- Cancel:** Button

Please change the IP address and subnet mask according to the actual environment and click "OK".

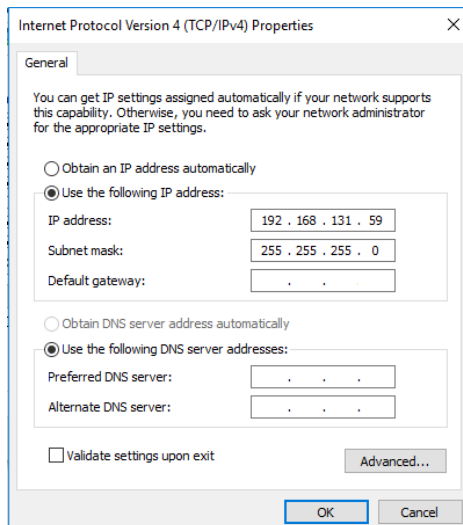
* In the "IP address of the other host that allows Passive_Open" column, specify the IP address of the PC that is permitted to communicate with HIT – M.

Communication to HIT - M from other than the IP address set in this column is not accepted.

When the setting is completed, a message like the one shown below will be displayed. Click "OK" and close HIT Sample.



Set the IP address and subnet mask of the PC to the value before changing in 2-5.
Please change the setting of the personal computer like 2-1 ~ 2-5.



Start HIT Sample and perform communication test, and if OK is displayed LAN setting change is completed.

If it is displayed as NG, please check whether the setting of PC and HIT-M is correct, and check whether the same IP address exists on the network and try the communication test again.