

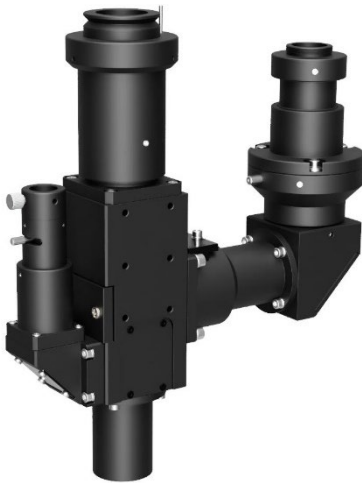
# Laser Processing Tube

OUCI-M1Y4

RoHS

**Observation and Laser Processing Tube with coaxial illumination that can introduce a laser. When a Mask or Slit is placed at the intermediate image position, the Mask or Slit image is transferred to the work surface for processing.**

- Compatible with 266nm, 355nm, 532nm, and 1064nm lasers.
- The camera sensor size is 1 inch (diagonal 15.9 mm), allowing observation of a wide area.
- Our objective lenses for Observation (PAL series) and Laser Processing (PFL-UV, PAL-NUV, PAL-NIR series) can both be used.



## Guide

- ▶ Bright-field observation with coaxial illumination along with LED spot illumination is possible.
- ▶ Contrast of the illumination light can be adjusted with an aperture diaphragm.
- ▶ Various applications are possible in combination with our catalog products (stages, light sources, etc.).

## Attention

- ▶ This product is designed to process by placing a Slit at the intermediate image position and transferring the Slit image to the work surface. Please note that if used without proper placement, the product will not perform as intended.
- ▶ When using a 532nm laser, the laser is directed toward the camera, which may damage the camera.  
Please prepare and use filter.
- ▶ Performance and Safety are not warranted with the inclusion of the laser.

Specification		
Part Number		<b>OUCI-M1Y4</b>
Product Name		Laser Processing Tube
Observed Image		Bright Field / Upright Image
Mounting Surface		2
Laser Port	Number of Port	1
	Compatible laser wavelengths	266nm/355nm/532nm/1064nm
	Tube lens focal length	1x (200mm)
	Intermediate image size	Φ10mm
	Laser mount	With focus adjustment mechanism
Camera Port	Number of Port	1
	Observation wavelength	Visible range(460-650nm)
	Imaging lens focal length	1x (200mm)
	Mount	C mount (with centering and focus adjustment mechanism)
	Compatible image sensor size	1 type (diagonal15.9mm) or less
Filter	φ25mm~φ25.4mm t=8.5mm or less (sold separately)	
Illumination	Method	Telecentric illumination with aperture diaphragm
	Compatible light sources	SLA-100B
	Filter	-
Weight		1.5kg
Objective Lens (Corresponding objective lens screw)		PAL series (φ26 x 0.706) PFL-UV/PAL-NUV/PAL-NIR series (φ26 x 0.706)

**OUCI-M1Y4**

