

5000m Fiber-Coupled IR Laser Illuminator

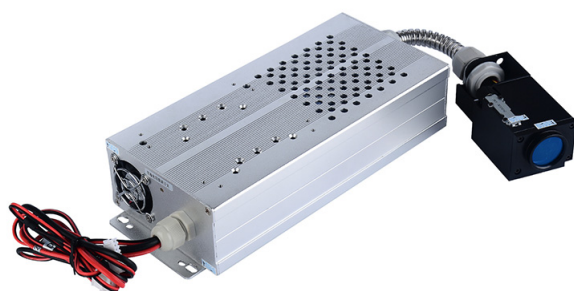
HSL Series

HSL Series

This laser illuminator is high performance integrated with high quality fiber-coupled laser diode and excellent optics design, and outstanding circuit control with high efficiency. It has big beam angle zooming, which can match the field view angle of cameras. It also has friendly interfaces such as operating voltage, communication protocol and installation schematic. It can be widely used in high-speed dome, PTZ camera and traffic monitoring.

This illuminator is compatible with major lens and cameras, integrated with the protocols such as Pelco D. It is easy for users to implement the illuminator. Simultaneously, Position can be preset via serial port, users can call the instruction to operate conveniently in use.

As the optic head is separated from diode and circuit, it is very easy to collimate the laser lens and camera lens, which can make the tunable rack compact.



Features

- Beam angle zooming electrically
- Illumination over 5000m range
- High reliability, lifetime up to 20000hrs
- Compact, easy to integrate
- RS232, RS485, TTL interface optional
- Negligible off-axis divergence, easy to collimate with camera lens
- Uniform beam intensity, speckle free
- Operating state memory
- Predefining position
- Low heat, high efficiency

Applications

- Video surveillance system
- Automobile night vision
- Machining vision
- Optical curtain
- Display applications
- Military applications

Specifications

Parameters	Typical values	Unit	Remarks
Model no.	HSL-XX-**		XX =Wavelength ; **=Protocol interface
Laser mode	Mutimode	—	
Wavelength	808/915/940±10	nm	
Optical power	25	w	@exit
Spot shape	Circular		
Illuminating distance	5000	m	
Spot uniform	Very good		
Fan angle	0.3-23	°	±0.2°
Operating voltage	24	V	12V optional
Operating current	-	A	
Operating mode	CW		
Lifetime	20000	hrs	
Operating temperature	-70	°	
Storage temperature	-125	°	
Power consumption	<25	w	
Dimensions	507'107'63	mm	
Material	Alloy		
Surface color	Silver	-	
Laser classification	IV		
Control A/Tx	Yellow		
Control B/Rx	Blue		
Control cathode	White		
Power anode	Red		
Power cathode	Black		
Protocol interface	RS232; RS485;TTL		
Protocol	Pelco D		optional
Surface processing	-		
Weight	2000	g	
Heat dissipation	Forced wind		

Application Systems

Optics & Optical Coatings

Opto-Mechanics

Bases

Manual Stages

Actuators & Adjusters

MotORIZED Stages

Light Sources & Laser Safety

Index

Guide

Lasers

Detectors

Laser Safety Equipments

Light Sources