



For the Bar Lights  
LDL2 / LDL-PF series



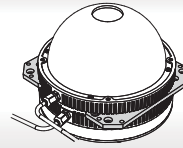
For the Bar Lights  
LDL2-33X8



For the Bar Lights  
LDL2 series



For the Flat Lights  
TH2 / TH series



Light joint bracket

➤ For the Bar Lights LDL2 / LDL-PF Series

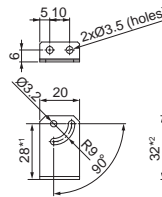
The angle of illuminating can be adjusted as you desire when securing the Light Unit.

L-model bracket

Model name	Applicable Light Unit (Common for all colors)
BK-LDL2	For the LDL2 series
BK-LDL-PF	For the LDL-PF series

• Dimensions (mm)

BK-LDL2 / BK-LDL-PF



Four-way mounting brackets

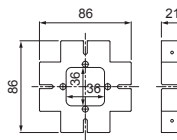
Model name	Applicable Light Unit (Common for all colors)
BK-LDQ2-33X8	For LDL2-33X8

(Two brackets are included.)

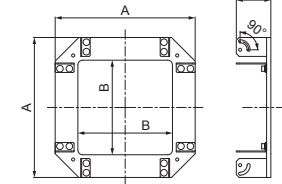
\*1 For BK-LDL-PF: 32  
\*2 For BK-LDL-PF: 36

Model name	Applicable Light Unit (Common for all colors, four-unit use)	Dimensions	
		A	B
BK-LDQ2-41X16	LDL2-41X16 series	108	60
BK-LDQ2-80X16	LDL2-80X16 series	148	100
BK-LDQ2-119X16	LDL2-119X16 series	186	138
BK-LDQ2-158X16	LDL2-158X16 series	225	177
BK-LDQ2-74X30	LDL2-74X30 series	150	100
BK-LDQ2-98X30	LDL2-98X30 series	174	124
BK-LDQ2-122X30	LDL2-122X30 series	198	148
BK-LDQ2-146X30	LDL2-146X30 series	222	172
BK-LDQ2-218X30	LDL2-218X30 series	294	244
BK-LDQ2-266X30	LDL2-266X30 series	342	292

BK-LDQ2-33X8



BK-LDQ2



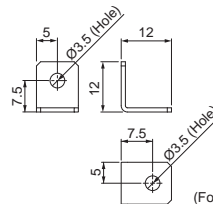
➤ For the Flat Lights TH2 / TH Series

This is a dedicated bracket for securing the TH2/TH Series Light Units. You can secure the Light Units at four points.

Model name	Applicable Light Unit (Common for all colors)
BK-TH-LE12	For the TH2/TH series

• Dimensions (mm)

BK-TH-LE12



(Four brackets are included.)

For TH2: This bracket is not applicable to the camera-window type Light Units with a 300x300 mm emitting surface and to the large type Light Units.

➤ Light Joint Brackets

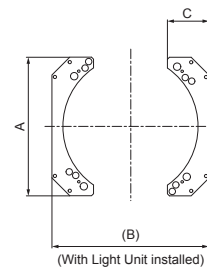


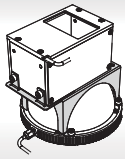
You can combine Dome and Ring Lights. Imaging can be performed by lighting switching or simultaneous lighting.

Model name	Applicable Light Unit 1 (Common for all colors)	Applicable Light Unit 2 (Common for all colors)	Dimensions			
			A	B	C	Thickness
BK-75-JO	HPD2-75 series HPD-PF-75 series	HPR2-75 series	84	91	35	4
		HPR2-PF-75 series				
		LDR2-100-LA series				
		LDR-96-LA1 series				
BK-100-JO	HPD2-100 series HPD-PF-100 series	HPR2-100 series	106	116	32	
		HPR-PF-100 series				
		LDR2-132-LA series				
		LDR-146-LA1 series				
BK-150-JO	HPD2-150 series HPD-PF-150 series	HPR2-150 series	140	166	42	
		HPR-PF-150 series				
		LDR2-170-LA series				
		LDR-176-LA1 series				
BK-200-JO	HPD2-200 series HPD-PF-200 series	HPR2-200 series	170	216	52	
		HPR-PF-200 series				
		LDR2-208-LA series				
		LDR-206-LA1 series				
BK-250-JO	HPD2-250 series	HPR2-250 series	210	266	56	

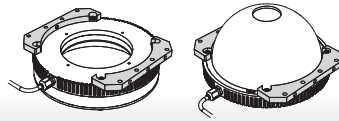
• Dimensions (mm)

BK-75-JO  
BK-100-JO  
BK-150-JO  
BK-200-JO  
BK-250-JO





Coaxial Light joint bracket



Expansion mounting bracket

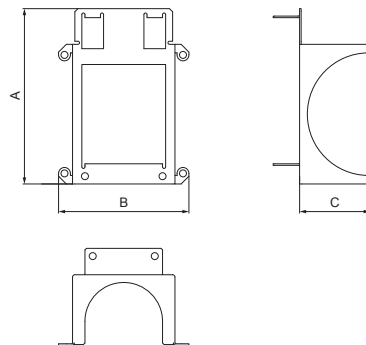
## Coaxial Light Joint Brackets

You can combine Dome and Coaxial Lights. Uniform illumination can be provided from all directions. Irregular illuminating is eliminated.

Model name	Applicable Light Unit 1 (Common for all colors)	Applicable Light Unit 2 (Common for all colors)	Dimensions		
			A	B	C
BK-HPD2-75-LFV	HPD2-75 series HPD-PF-75 series	LFV3-35 series LFV-PF-35 series	95	66	33
BK-HPD2-100-LFV	HPD2-100 series HPD-PF-100 series	LFV3-50 series LFV-PF-50 series	113	84	45.5
BK-HPD2-150-LFV	HPD2-150 series HPD-PF-150 series	LFV3-50 series LFV-PF-50 series	129.5	119	70.5
BK-HPD2-200-LFV	HPD2-200 series	LFV3-70 series	164	155	95.5
BK-HPD2-250-LFV	HPD2-250 series	LFV3-70 series	200	190	116.5

- Dimensions (mm)

BK-HPD2-75-LFV  
BK-HPD2-100-LFV  
BK-HPD2-150-LFV  
BK-HPD2-200-LFV  
BK-HPD2-250-LFV



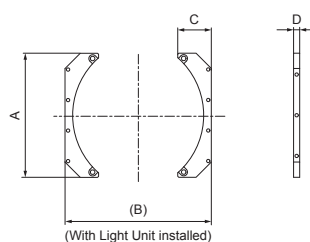
## Expansion Mounting Brackets

These brackets are for expanding the mounting methods of Light Units. You can mount on horizontal as well as vertical surfaces.

Model name	Applicable Light Unit 1 (Common for all colors)	Dimensions			
		A	B	C	D
BK-50-CI	HPR2-50 series	40	50	13	5
BK-75-CI	HPR2-75 series	70	91	22	6
	HPR-PF-75 series				
	HPD2-75 series				
	HPD-PF-75 series				
BK-100-CI	HPR2-100 series	90	116	25	6
	HPR-PF-100 series				
	HPD2-100 series				
	HPD-PF-100 series				
BK-150-CI	HPR2-150 series	122	166	33	6
	HPR-PF-150 series				
	HPD2-150 series				
	HPD-PF-150 series				
BK-200-CI	HPR2-200 series	160	216	40	6
	HPR-PF-200 series				
	HPD2-200 series				
	HPD-PF-200 series				
BK-250-CI	HPD2-250 series	210	266	60	6
	HPR2-250 series				

- Dimensions (mm)

BK-50-CI  
BK-75-CI  
BK-100-CI  
BK-150-CI  
BK-200-CI  
BK-250-CI



- Example of the expansion mounting bracket in use



Ring Light: Image of usage with HPR2-200RD

- Example of the expansion mounting bracket in use



Dome Light: Image of usage with HPD2-250SW

PD3  
PD2  
STU-3000  
PSB  
POD  
PTU2  
PF  
CN-4024-2-EIPT  
PB-2430-1  
CC-ST-1024  
BB  
PJ2  
PJ  
CC-PJ-0707  
PSCC  
PSB4-30024  
PSB3-30024

Band-Pass Filters  
Lens Filters  
Diffusion Plates  
Polarizing Plates  
Light Control Films  
Brackets  
Fixtures, etc.  
SM/EL Cables