

Options

Polarizing Plates

These are used together with a polarizing filter attached to the camera lens for the purpose of eliminating surface glare.



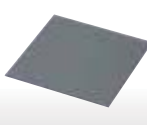
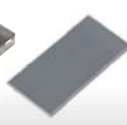
For the Ring Lights
LDR2 / LDR-PF series



For the Bar Lights
LDL2-19X4 series
LDL2-33X8 series



LDL2 series
LDL-PF series



For the Coaxial Lights
LFV3 / LFV-PF series



For the Spot Lights
LSP series

For the Ring Lights LDR2 / SQR / LDR-PF Series

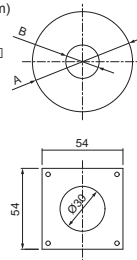
Model name	Applicable Light Unit (Common for all colors)	Dimensions		
		A	B	Thickness
PL-LDR-32*	LDR2-32	Ø32	Ø9	0.8
PL-LDR-42*	LDR2-42	Ø42	Ø14	
PL-LDR-50*	LDR2-50	Ø50	Ø26	
PL-LDR2-70	LDR2-70	Ø76	Ø35	
PL-LDR-90*	LDR2-90	Ø90	Ø40	
PL-LDR-120-40*	LDR2-120	Ø120	Ø40	
PL-SQR-56	SQR-56	Refer to the drawing		(2)
PL-LDR-PF-36*	LDR-PF-36	Ø36	Ø10	
PL-LDR-PF-54*	LDR-PF-54	Ø54	Ø22	
PL-LDR-PF-75*	LDR-PF-75	Ø75	Ø35	

• Dimensions (mm)

PL-LDR-□□□

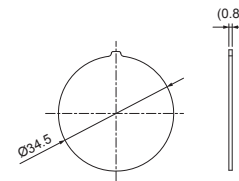
PL-LDR-PF-□□□

PL-SQR-56



For the Spot Lights LSP Series

Model name	Applicable Light Unit (Common for all colors)
PL-LSP-41	LSP-41



For the Bar Lights LDL2 / LDL-PF Series

Model name	Applicable Light Unit (Common for all colors)	Dimensions	
		A	B
PL-LDL2-19X4-HO	LDL2-19X4	6.4	28
PL-LDL2-19X4-VE	LDL2-19X4	6.4	28
PL-LDL2-33X8-HO	LDL2-33X8	10.4	44
PL-LDL2-33X8-VE	LDL2-33X8	10.4	44
PL-LDL2-41X16	LDL2-41X16	23.2	46
PL-LDL2-41X16-VE	LDL2-41X16		46
PL-LDL2-80X16	LDL2-80X16	23.2	84.7
PL-LDL2-80X16-VE	LDL2-80X16		84.7
PL-LDL2-119X16	LDL2-119X16	23.2	123.7
PL-LDL2-119X16-VE	LDL2-119X16		123.7
PL-LDL2-158X16	LDL2-158X16	23.2	162.7
PL-LDL2-158X16-VE	LDL2-158X16		162.7
PL-LDL-PF-52X18-HO	LDL-PF-52X18	22	58
PL-LDL-PF-52X18-VE	LDL-PF-52X18		58
PL-LDL-PF-102X18-HO	LDL-PF-102X18	22	108
PL-LDL-PF-102X18-VE	LDL-PF-102X18		108

Model name	Applicable Light Unit (Common for all colors)	Dimensions	
		A	B
PL-LDL-PF-152X18-HO	LDL-PF-152X18	22	158
PL-LDL-PF-152X18-VE	LDL-PF-152X18	22	158
PL-LDL2-26X30	LDL2-26X30	30.7	30.7
PL-LDL2-26X30-VE	LDL2-26X30		30.7
PL-LDL2-50X30	LDL2-50X30	37.2	79
PL-LDL2-50X30-VE	LDL2-50X30		79
PL-LDL2-74X30	LDL2-74X30	37.2	79
PL-LDL2-74X30-VE	LDL2-74X30		79
PL-LDL2-98X30	LDL2-98X30	37.2	102.7
PL-LDL2-98X30-VE	LDL2-98X30		102.7
PL-LDL2-122X30	LDL2-122X30	37.2	126.7
PL-LDL2-122X30-VE	LDL2-122X30		126.7
PL-LDL2-146X30	LDL2-146X30	37.2	150.7
PL-LDL2-146X30-VE	LDL2-146X30		150.7
PL-LDL2-218X30	LDL2-218X30	37.2	222.7
PL-LDL2-218X30-VE	LDL2-218X30		222.7

Model name	Applicable Light Unit (Common for all colors)	Dimensions	
		A	B
PL-LDL2-266X30	LDL2-266X30	37.2	270.7
PL-LDL2-266X30-VE	LDL2-266X30	37.2	270.7
PL-LDL-PF-52X30-HO	LDL-PF-52X30	34	58
PL-LDL-PF-52X30-VE	LDL-PF-52X30		58
PL-LDL-PF-102X30-HO	LDL-PF-102X30	34	108
PL-LDL-PF-102X30-VE	LDL-PF-102X30		108
PL-LDL-PF-152X30-HO	LDL-PF-152X30	34	158
PL-LDL-PF-152X30-VE	LDL-PF-152X30		158

There are two types of polarizing plates for the Bar Lights LDL2 series. They are used together as shown below.

Mounted to illuminate from all four directions:

Example: Four LDL2-41X16 units

Polarization direction is 90° different.

PL-LDL2-41X16 (PL-LDL2-33X8-HO)

There are two types and they should be combined so that they are paired.

PL-LDL2-41X16-VE (PL-LDL2-33X8-VE)

• Distinguishing paired polarizing plates

Paired: Appears to be black

Not paired: Does not appear to be black

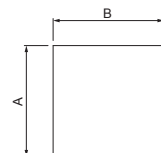
• Dimensions (mm)

For the Coaxial Lights LFV3 / LFV-PF Series

Model name	Applicable Light Unit (Common for all colors)	Dimensions		
		A	B	Thickness
PL-LFV3-35	LFV3-35 / LFV-PF-35	34	42	0.8
PL-LFV3-50	LFV3-50 / LFV-PF-50	52	56	
PL-LFV3-50X100	LFV3-50X100	52	106	
PL-LFV3-70	LFV3-70	73	80	

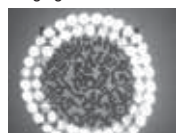
Model name	Applicable Light Unit (Common for all colors)	Dimensions		
		A	B	Thickness
PL-LFV3-100	LFV3-100	100	106	0.8
PL-LFV3-130	LFV3-130	130	138	
PL-LFV3-200	LFV3-200	202	222	

• Dimensions (mm)



Example of usage

Imaging of QR code



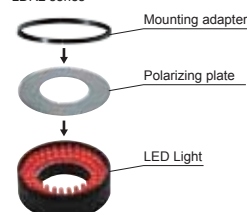
No polarizing plate



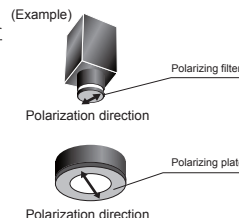
Using a polarizing plate

Example installation

Example: Attachment of Ring Lights LDR2 series



• The polarizing filters and plates are used together.



Adjustment procedures for polarizing plates and polarizing filters

Specular reflective components are cut out and the effects can be observed when the polarization direction of the polarizing plate installed on the Light Unit and the polarization direction of the filter attached to the camera are at a right angle (90°) to each other.

Caution

Polarizing plates are consumables. Heat may cause deformation or discoloring depending on the use environment. Make sure that countermeasures against overheating are implemented and that the temperature does not exceed the operating limit.