

Lens Filters



Sharp-cut filter Blue filter Polarizing filter Ultraviolet cutting filter Ultraviolet transmission filter

Sharp-Cut Filters

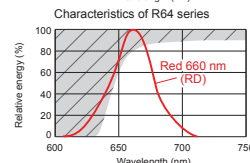
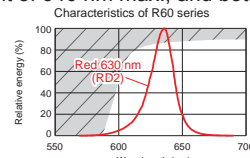
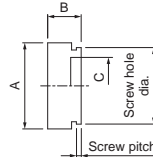
Mounted in front of a lens, the R60 series blocks light of 600 nm max., and the R64 series blocks light of 640 nm max., and both transmit the light in a wavelength longer than these.

R60 Series

Model name	Notes		Dimensions		
	Screw hole diam.	Screw pitch	A	B	C
R60-16	M16.0	P0.5	Ø18	7	Ø12
R60-25	M25.5		Ø27.5		Ø21
R60-27	M27.0		Ø28.5		Ø23
R60-30	M30.5		Ø32		Ø27

Model name	Notes		Dimensions		
	Screw hole diam.	Screw pitch	A	B	C
R60-40	M40.5	P0.5	Ø42	7	Ø36.5
R60-46	M46.0	P0.75	Ø48		Ø41.5
R60-C	For C-mount attachment		Ø30	9	Ø20.1

• Dimensions (mm)



Light is transmitted in the white range.

R64 Series

Model name	Notes		Dimensions		
	Screw hole diam.	Screw pitch	A	B	C
R64-16	M16.0	P0.5	Ø18	7	Ø12
R64-25	M25.5		Ø27.5		Ø21
R64-27	M27.0		Ø28.5		Ø23
R64-30	M30.5		Ø32		Ø27

Model name	Notes		Dimensions		
	Screw hole diam.	Screw pitch	A	B	C
R64-40	M40.5	P0.5	Ø42	7	Ø36.5
R64-46	M46.0	P0.75	Ø48		Ø41.5
R64-C	For C-mount attachment		Ø30	9	Ø20.1

Blue Filters

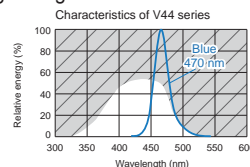
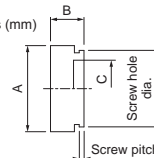
Mounted in front of a lens, the V44 series transmits the light in a band centered on 440 nm in a blue wavelength range from 350 to 520 nm.

V44 Series

Model name	Notes		Dimensions		
	Screw hole diam.	Screw pitch	A	B	C
V44-25	M25.5	P0.5	Ø27.5	7	Ø21
V44-27	M27.0		Ø28.5		Ø23
V44-30	M30.5		Ø32		Ø27

Model name	Notes		Dimensions		
	Screw hole diam.	Screw pitch	A	B	C
V44-40	M40.5	P0.5	Ø42	7	Ø36.5
V44-46	M46.0	P0.75	Ø48		Ø41.5
V44-C	For C-mount attachment		Ø30	9	Ø20.1

• Dimensions (mm)



Light is transmitted in the white range.

Polarizing Filters

These filters are attached to the filter thread part of lens. They are used together with a polarizing plate attached to the Light Unit for the purpose of eliminating surface glare.

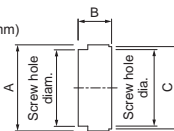
PL Series / PL2 Series

Model name	Notes		Dimensions		
	Screw hole diam.	Screw pitch	A	B	C
PL-25	M25.5	P0.5	Ø27.4	9.3	Ø27.0
PL-25-NL	M25.5		Ø30.5	12	
PL-27	M27.0		Ø29.4	9.3	Ø28.5
PL-27-NL	M27.0		Ø32	12	
PL-30	M30.5		Ø32.4	9.3	
PL-30-NL	M30.5	Ø32.0	12	Ø35.5	
PL-40	M40.5	Ø42.4	9.3	Ø42.0	
PL-40-NL	M40.5	Ø42.0	12	Ø45.0	
PL-46	M46.0	P0.75	Ø48.5	9.5	Ø48.0
PL2-35.5-NL	M35.5	P0.5	Ø37	9.6	Ø31
PL2-37.5-NL	M37.5		Ø39	9.5	Ø33
PL2-43-NL	M43		Ø45	10	Ø38.9
PL2-46-NL	M46	P0.75	Ø48	10	Ø41.7

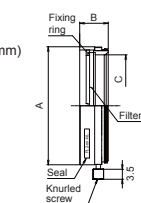
-NL models have a locking mechanism.

Model name	Notes		Dimensions		
	Screw hole diam.	Screw pitch	A	B	C
PL2-48-NL	M48	P0.75	Ø50	10	Ø43.7
PL2-49-NL	M49		Ø51	10	Ø44.8
PL2-52-NL	M52		Ø54	10	Ø47.8
PL2-55-NL	M55		Ø57	10	Ø50.7
PL2-58-NL	M58		Ø60	10	Ø53.7
PL2-62-NL	M62	P1.0	Ø65	11	Ø57.8
PL2-67-NL	M67		Ø70	11	Ø62.8
PL2-72-NL	M72		Ø75	11	Ø67.8
PL2-77-NL	M77	P1.0	Ø80	11	Ø72.4
PL2-82-NL	M82		Ø85	11	Ø76.8
PL2-86-NL	M86		Ø90	12.5	Ø80
PL2-95-NL	M95	P1.0	Ø100	14	Ø89.5
PL2-105-NL	M105		Ø109.7	14	Ø99.05

• PL series dimensions (mm)



• PL2 series dimensions (mm)



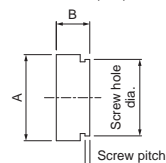
Ultraviolet Cutting Filters

The L42 series blocks light of 420 nm max. and transmits the light in a wavelength longer than this.

L42 Series

Model name	Notes		Dimensions	
	Screw hole diam.	Screw pitch	A	B
L42-25	M25.5	P0.5	Ø27.5	6.5
L42-27	M27.0		Ø28.5	
L42-30	M30.5		Ø32	
L42-40	M40.5		Ø42	
L42-46	M46.0		P0.75	

• Dimensions (mm)



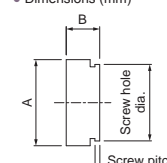
Ultraviolet Transmission Filters

The U-340 series transmits light in a wavelength range from approximately 280 to 380 nm centered on 340 nm.

U-340 Series

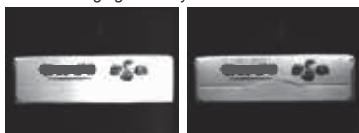
Model name	Notes		Dimensions	
	Screw hole diam.	Screw pitch	A	B
U340-25	M25.5	P0.5	Ø27.5	6.5
U340-27	M27.0		Ø28.5	
U340-30	M30.5		Ø32	
U340-40	M40.5		Ø42	
U340-46	M46.0		P0.75	

• Dimensions (mm)



Example of usage

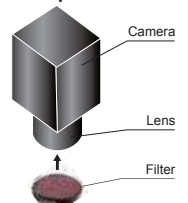
External imaging of candy box



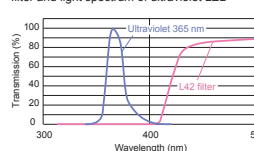
Sharp cut
No filter

Sharp cut
Using filter

Example installation



Comparison of characteristics of ultraviolet cutting filter and light spectrum of ultraviolet LED



Comparison of characteristics of ultraviolet transmission filter and light spectrum of ultraviolet LED

