

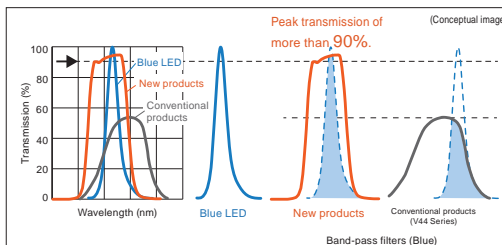
# Band-Pass Filters

These camera lens filters transmit light in a specific wavelength region and prevent the influence of ambient light.



## Features

- Ideal for LED wavelengths
- Highly transmissive
- Hard-coated filters with superior durability
- 12 different models
- Each filter available in 25 sizes
- Total of 300 Models



## Model Name

Example:

**F-BP470-**□

Wavelength Filter size

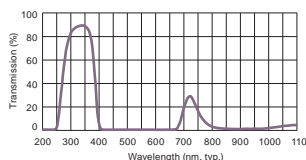
BP: Band-pass filter  
LP: Sharp-cut filter or protective filter  
SP: Short-pass filter

## ➤ For Ultraviolet Light Units

**F-BP324-**□



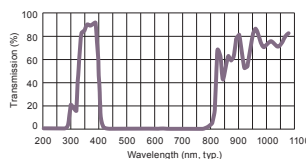
Filter color	Ultraviolet
Lens material	Glass
Useful range	290 to 365 nm
Full width at half max	105 nm
Wavelength tolerance	+/- 10 nm
Peak transmission	>90%
Filter size	Refer to Table of Filter Dimensions.



**F-BP365-**□

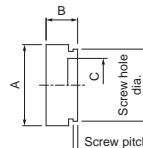


Filter color	Ultraviolet
Lens material	Glass
Useful range	335 to 400 nm
Full width at half max	80 nm
Wavelength tolerance	+/-10 nm
Peak transmission	>85%
Filter size	Refer to Table of Filter Dimensions.



**New**

### ● Dimensions (mm)

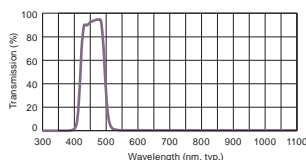


## ➤ For Blue Light Units

**F-BP470-**□



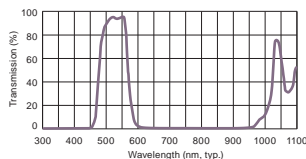
Filter color	Blue
Lens material	Glass
Useful range	425 to 495 nm
Full width at half max	85 nm
Wavelength tolerance	+/- 10 nm
Peak transmission	>90%
Filter size	Refer to Table of Filter Dimensions.



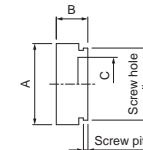
**F-BP505-**□



Filter color	Cyan
Lens material	Glass
Useful range	485 to 550 nm
Full width at half max	90 nm
Wavelength tolerance	+/- 10 nm
Peak transmission	>90%
Filter size	Refer to Table of Filter Dimensions.



### ● Dimensions (mm)

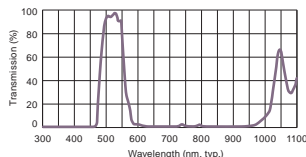


## ➤ For Green Light Units

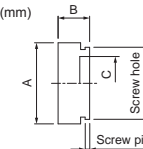
**F-BP525-**□



Filter color	Light green
Lens material	Glass
Useful range	500 to 555 nm
Full width at half max	80 nm
Wavelength tolerance	+/- 10 nm
Peak transmission	>90%
Filter size	Refer to Table of Filter Dimensions.



### ● Dimensions (mm)

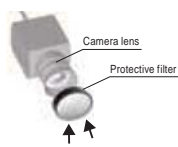


## ➤ Protective Filter

**F-LP340-**□

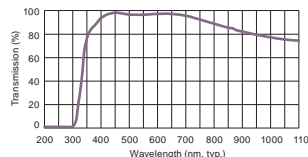


Anti-reflection coating glass is used.

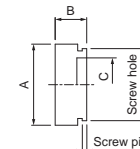


Protects the camera lens from scratches and dust.

Lens material	Glass
Useful range	350 to 800 nm
Cut-on wavelength (50% transmission)	340 nm
Wavelength tolerance	+/- 10 nm
Peak transmission	98%
Filter size	Refer to Table of Filter Dimensions.



### ● Dimensions (mm)



Note: Please contact your sales representative for information on acrylic protective filters.

PD3  
 PD2  
 STU-3000  
 PSB  
 POD  
 PTU2  
 PF  
 CN-4024-2-EIPT  
 PB-2430-1  
 CC-ST-1024  
 BB  
 PJ2  
 PJ  
 CC-PJ-0707  
 PSCC  
 PSB4-30024  
 PSB3-30024

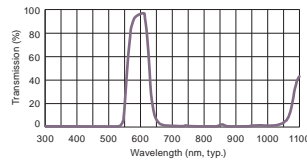
Band-Pass Filters  
 Lens Filters  
 Diffusion Plates  
 Polarizing Plates  
 Light Control Films  
 Brackets  
 Fixtures, etc.  
 SM/EL Cables

## For Red Light Units

### F-BP590-□



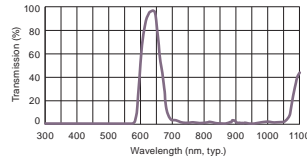
Filter color	Orange
Lens material	Glass
Useful range	560 to 600 nm
Full width at half max	70 nm
Wavelength tolerance	+/- 10 nm
Peak transmission	>90%
Filter size	Refer to Table of Filter Dimensions.



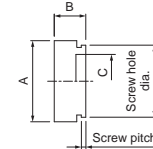
### F-BP635-□



Filter color	Light red
Lens material	Glass
Useful range	615 to 645 nm
Full width at half max	60 nm
Wavelength tolerance	+/- 10 nm
Peak transmission	>90%
Filter size	Refer to Table of Filter Dimensions.



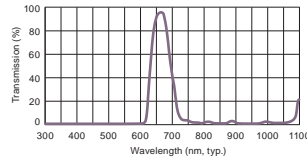
● Dimensions (mm)



### F-BP660-□



Filter color	Dark red
Lens material	Glass
Useful range	640 to 680 nm
Full width at half max	65 nm
Wavelength tolerance	+/- 10 nm
Peak transmission	>90%
Filter size	Refer to Table of Filter Dimensions.



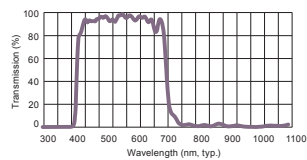
## Short-Pass Filter

**New**

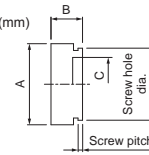
### F-SP700-□



Lens material	Glass
Useful range	410 to 690 nm
Cut-on wavelength (50% transmission)	400/700 nm (Cut-on / cut-off)
Wavelength tolerance	+/- 10 nm
Peak transmission	>90 %
Filter size	Refer to Table of Filter Dimensions.



● Dimensions (mm)

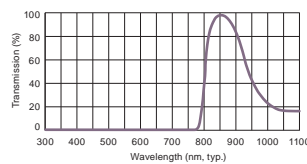


## For Infrared Light Units

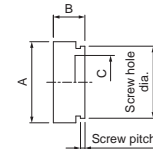
### F-BP850-□



Filter color	Infrared
Lens material	Glass
Useful range	820 to 910 nm
Full width at half max	160 nm
Wavelength tolerance	+/- 10 nm
Peak transmission	>90%
Filter size	Refer to Table of Filter Dimensions.



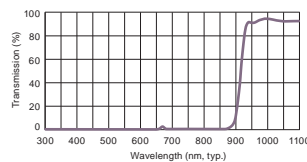
● Dimensions (mm)



### F-LP920-□ (sharp-cut filter)



Filter color	Infrared (sharp-cut)
Lens material	Glass
Useful range	930 to 1,100 nm
Cut-on wavelength (50% transmission)	920 nm
Wavelength tolerance	+/- 10 nm
Peak transmission	90%
Filter size	Refer to Table of Filter Dimensions.



## Table of Filter Dimensions (mm)

End of the model name (-□)	Notes		Dimensions		
	Screw hole diameter	Screw pitch	A	B	C
13.25	M13.25	P0.5	Ø14.3	7.5	Ø10.6
22.5	M22.5		Ø24	7	Ø18.5
25.5	M25.5		Ø27.5		Ø21
27	M27.0		Ø29		Ø22.5
30.5	M30.5		Ø32.5		Ø25.5
34	M34		Ø36		Ø29
35.5	M35.5	Ø37.5	Ø30.5		
37	M37	P0.75	Ø39	6.5	Ø31.9
37.5	M37.5		Ø39.5	7.2	Ø32.5
39	M39	P0.5	Ø41	7	Ø34
40.5	M40.5		Ø42.5		Ø35.5
43	M43		Ø45		Ø38
46	M46		Ø48		Ø41
49	M49		Ø51		Ø44
52	M52		Ø54		Ø47
55	M55	Ø57	Ø50		
58	M58	P0.75	Ø60	8.3	Ø52.9
62	M62		Ø64.1		Ø57.1
67	M67		Ø70		Ø62.5
72	M72		Ø75		Ø67.5
77	M77		Ø80.1		Ø73
82	M82		Ø84.5		Ø77.7
86	M86	P1.0	Ø89	8.3	Ø81.7
95	M95		Ø98.2	8.6	Ø89.9
105	M105		Ø107.8	8.5	Ø100

## Test Kit



This Kit includes various filters.

Model name: F-FK-10

Contents (total of 12 models)

- Ultraviolet (F-BP324-27)
- Blue (F-BP470-27)
- Cyan (F-BP505-27)
- Light green (F-BP525-27)
- Orange (F-BP590-27)
- Light red (F-BP635-27)
- Dark red (F-BP660-27)
- Infrared: band-pass (F-BP850-27)
- Infrared: sharp-cut (F-LP920-27)
- Protective filter (F-LP340-27)
- Step adapter  
 M25.5-M27 (F-SU25.5-27)  
 M30.5-M27 (F-SD30.5-27)