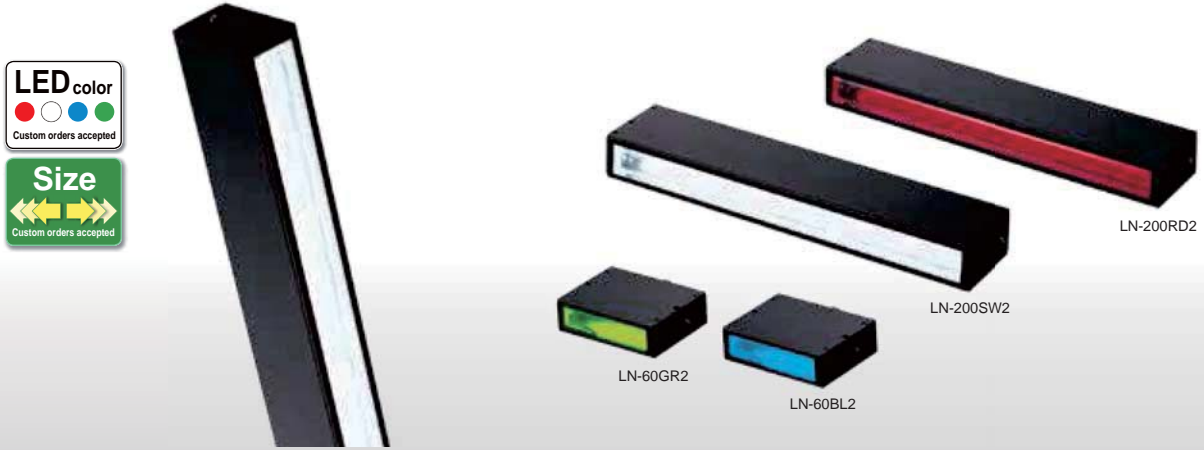


Provides converged line lighting



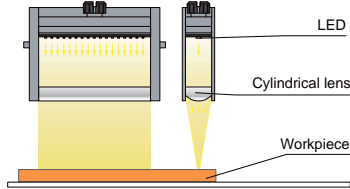
Applications

Visual inspection of film circuit boards, inspection for faults in non-woven fabrics, inspection of parts mounted on circuit boards, visual inspection of printed objects, visual inspection of plastic products, etc.

Features

Transmits light illuminated from the LEDs through the cylindrical lens on the tip for converged line lighting.

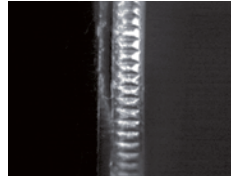
Example configuration (LN-60)



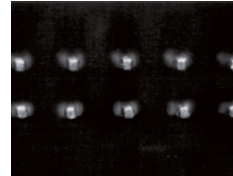
We accept custom orders. Please feel free to inquire.

- Shape modifications
- Brightness increases
- Changes in wavelength, etc.

Imaging the side of a coin



Imaging for measuring width of a connector pin



Imaging of damage on glass



Lineup

Model name	LED color	Power consumption	Peak wavelength / correlated color temperature	Options	Extension cables	Recommended Control Units	Weight
LN-60RD2	Red	24 V / 1.0 W	630 nm	-	FCB Straight Cable*3 FCB-W 2-branch Cable*4 FCB-F 4-branch Cable FRCB Robot Cable	PD3*2 CC-ST-1024 PSB POD*1	130 g
LN-60SW2	White		5,500 K				
LN-60BL2	Blue		470 nm				
LN-60GR2	Green	24 V / 3.1 W	525 nm				
LN-200RD2	Red		630 nm				
LN-200SW2	White		5,500 K				
LN-200BL2	Blue	470 nm	525 nm	*3 The cables with a model name that ends with "-ME7", "-EL2", "-PF", or "-PF-EL9" are not included. *4 The cables with a model name that ends with "-EL2" are not included.	*2 Custom products with a PWM frequency of 500 kHz are available for Digital Control Unit PD3 series. Please contact your sales representative for details.	500 g	
LN-200GR2	Green	525 nm					

LED Properties: Spectral Distribution ▶ P.326

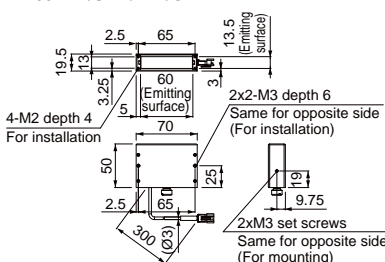
Extension Cables ▶ P.308

Control Unit Selection Guide ▶ P.251

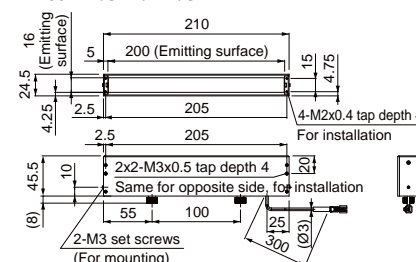
List of Control Unit Specifications ▶ P.253

Dimensions (mm)

LN-60RD2/SW2/BL2/GR2



LN-200RD2/SW2/BL2/GR2



You can change the connectors of the Light Unit cable. Choose between M12 connectors and flying leads. Refer to P.5 for details.

Various technical documents available.

- PDF Drawings
- DXF Drawings
- Product Brochures
- Instruction Guides
- 3D CAD
- Data Sheets
- Imaging Examples
- Digital Catalogs

Provides converged line lighting (High output type)



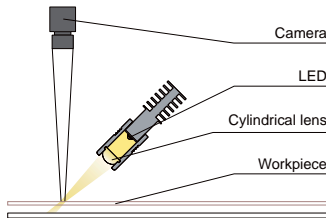
Applications

Visual inspection of film circuit boards, inspection for faults in non-woven fabrics, inspection of parts mounted on circuit boards, visual inspection of printed objects, visual inspection of plastic products, etc.

Features

Transmits light illuminated from the LEDs through the cylindrical lens on the tip for converged line lighting.

Example configuration (LN-60SW2-HK-STK)



Applications

Visual inspection of film-circuit boards Inspection for faults in non-woven fabrics



We accept custom orders. Please feel free to inquire.

- Shape modifications
- Brightness increases
- Changes in wavelength, etc.

Lineup

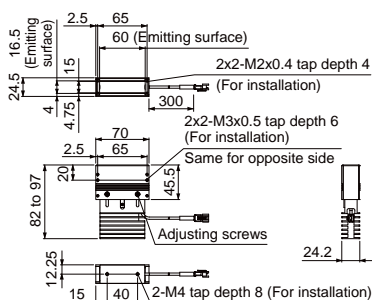
Model name	LED color	Power consumption	Peak wavelength / correlated color temperature	Options	Extension cables	Recommended Control Units	Weight
LN-60SW2-HK-STK	White	24 V / 6.1W	5,500 K	-	FCB*3 Straight Cable	FCB-W*4 2-branch Cable	250 g
LN-200SW2-HK-STK	White	24 V / 22 W	5,500 K		FCB-F 4-branch Cable	FRCB Robot Cable	750 g

LED Properties: Spectral Distribution ▶ P.326 Extension Cables ▶ P.308 Control Unit Selection Guide ▶ P.251 List of Control Unit Specifications ▶ P.253

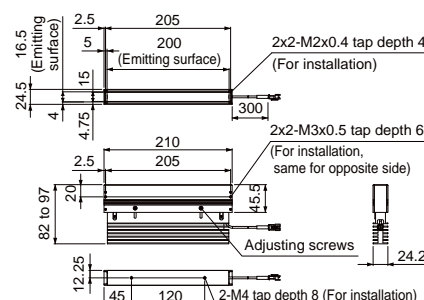
*2 Custom products with a PWM frequency of 500 kHz are available for Digital Control Unit PD3 series. Please contact your sales representative for details.
*3 The cables with a model name that ends with "-ME7", "-EL2", "-PF", or "-PF-EL9" are not included. *4 The cables with a model name that ends with "-EL2" are not included.

Dimensions (mm)

LN-60SW2-HK-STK



LN-200SW2-HK-STK



You can change the connectors of the Light Unit cable. Choose between M12 connectors and flying leads. Refer to P.5 for details.

You can inquire using our website.

- Sample Testing
- Light Unit Selection
- Free Product Trial
- Custom Orders
- Product Details
- Pricing/Quotation
- Discontinued Products

Direct Lighting

- LDR2
- LDR2-LA
- LDR-LA1
- SQR
- SQR-TP

Diffused Lighting

- HPR2
- LFR
- LKR
- FPR
- FPQ2

Direct Lighting

- LDL2
- LDLB
- HLDL2
- HL

Diffused Lighting

- TH2 (5 types)
- TH
- LFL
- HPD2
- LDM2
- LAV
- PDM
- LFX3
- LFX3-PT
- LFV3

Colimated Lighting

- MSU
- MFU

Strobe Lighting

- PF

Water-proof

- HLDR-IP/ HSL-PCL

Ultraviolet Lighting

- UV2
- UV
- LNSP-UV-FN

Infrared Lighting

- IR2

Intensity Control

- IU

Spot Lighting, Etc.

- HLV3
- HLV2
- LV
- LSP
- HFS/HFR
- HLV3-NR
- HLV3-3M-RGB-4
- HLV2-NR
- HLV2-3M-RGB-3W
- PFBR
- PFB3
- PFB2

Convergent Lighting

- LNLP
- LNSP2
- LNSP
- Coaxial Units
- LNSP-FN
- LN/LN-HK

Diffused Lighting

- LNSD
- LND2
- HLND
- LT
- LNV

Oblique/Angled Lighting

- LNDG
- LNIS2
- LNIS
- LNIS-FN

Lenses

- Telecentric Lens
- Macro Lens