

Provides diffused light evenly using a mechanism that combines a diffused lighting, coaxial lighting, and low-angle lighting



Applications Faulty plating inspection, inspection of a sealed target, inspection for foreign material attached to a glossy surface, character recognition and text inspection of glossy surfaces, dimension measuring of electronic parts, etc.

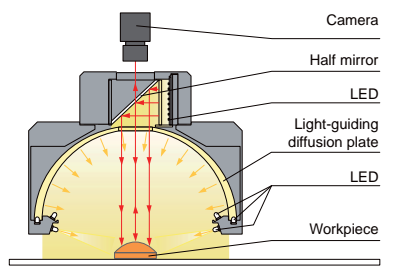
Features

This Light Unit combines the three types: dome lighting, low-angle lighting, and coaxial lighting. It illuminates the workpiece with uniform diffused light.

We accept custom orders. Please feel free to inquire.

- Shape modifications
- Brightness increases
- Changes in wavelength, etc.

Example configuration (PDM-150-15)

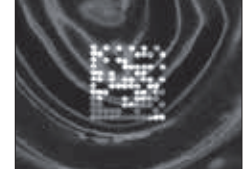


Imaging example: Imaging 2-D codes



Workpiece: Contact lens packages

LED Ring Light



It is difficult to determine the 2-D code due to the glossy and wavy surface.

PDM-150-15RD2



It is possible to determine the 2-D code by evenly illuminating the surface.

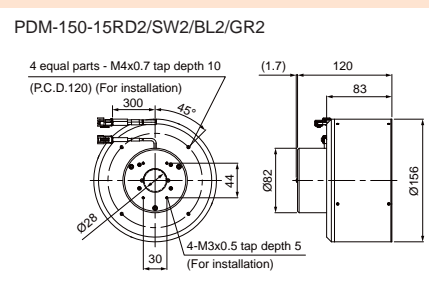
Lineup

Model name	LED color	Power consumption	Peak wavelength / correlated color temperature	Options	Extension cables	Recommended Control Unit	Weight					
PDM-150-15RD2	Red	24 V / 18 W	630 nm	-	<table border="1"> <tr> <td>FCB*1 Straight Cable</td> <td>FCB-F 4-branch Cable</td> </tr> <tr> <td>FCB-W*2 2-branch Cable</td> <td>FRCB Robot Cable</td> </tr> </table>	FCB*1 Straight Cable	FCB-F 4-branch Cable	FCB-W*2 2-branch Cable	FRCB Robot Cable	<table border="1"> <tr> <td>PD3</td> </tr> </table>	PD3	1,140 g
FCB*1 Straight Cable	FCB-F 4-branch Cable											
FCB-W*2 2-branch Cable	FRCB Robot Cable											
PD3												
PDM-150-15SW2	White	5,500 K	1,170 g									
PDM-150-15BL2	Blue	24 V / 22 W	470 nm	1,140 g								
PDM-150-15GR2	Green		525 nm									

Use a 3-channel Control Unit. [LED Properties: Spectral Distribution ▶ P.326](#) [Extension Cables ▶ P.308](#) [Control Unit Selection Guide ▶ P.251](#) [List of Control Unit Specifications ▶ P.253](#)

*1 The cables with a model name that ends with "-ME7", "-EL2", "-PF", or "-PF-EL9" are not included.
*2 The cables with a model name that ends with "-EL2" are not included.

Dimensions (mm)



Part	Power consumption
Coaxial illumination part	Red: 3.1 W, White: 2.2 W, Blue/Green: 2.7 W
Dome illumination part	Red: 10.2 W, White: 14 W, Blue/Green: 13 W
Low-angle illumination part	Red: 4.6 W, White/Blue/Green: 6.1 W

If adjusting the intensity for each part separately, use a 3-channel Control Unit.

You can change the connectors of the Light Unit cable. Choose between M12 connectors and flying leads. Refer to P.5 for details.

Direct Lighting: LDR2, LDR2-LA, LDR-LA1, SQR, SQR-TP

Diffused Lighting: HPR2, LFR, LKR, FPR, FPQ2

Direct Lighting: LDL2, LDLB, HLDL2, HL, TH2 (5 types), TH, LFL, HPD2, LDM2, LAV, PDM, LFX3, LFX3-PT, LFX3

Diffused Lighting: MSU, MFU

Strobe Lighting: PF

Water-proof Lighting: HLDR-IP/, HSL-PCL

Ultraviolet Lighting: UV2, UV, LNSP-UV-FN

Infrared Lighting: IR2

Intensity Control Lighting: IU

Spot Lighting, Etc.: HL3, HL2, LV, LSP, HFS/HFR, HL3-NR, HL3-3M-RGB-4, HL2-NR, HL2-3M-RGB-3W, PFBR, PFB3, PFB2

Convergent Lighting: LNLP, LNSP2, LNSP, Coaxial Units, LNSP-FN, LN/LN-HK

Diffused Lighting: LNSD, LND2, HLND, LT, LNV

Oblique-Angled Lighting: LNDG, LNS2, LNIS, LNIS-FN

Lenses: Telecentric Lens, Macro Lens