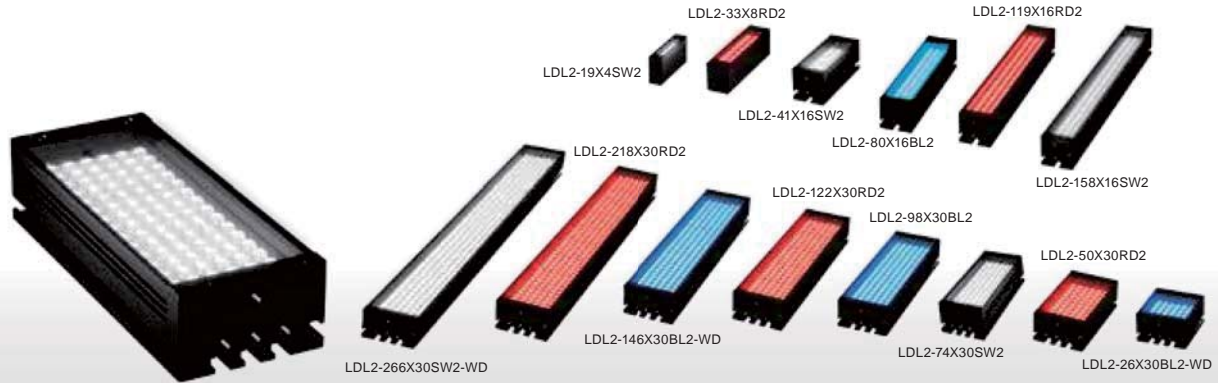


Provides direct light from an emitting part equipped with LEDs in straight lines



Applications

Various inspections for reading text, visual inspection for damage on long and thin workpieces, damage inspection for metal with hairline finishing, light source for a line sensor camera, various inspections to detect foreign material, etc.

Rich Lineup with 141 Models*

We have a lineup of 141 models*, such as combinations of the size and emitting width of the emitting surface, directional characteristics, and the emitted color.

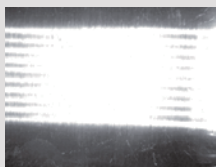
* Total number of models of the conventional products and high-power type products.

Compatible with a wide range of uses

You can freely adjust the illuminating direction and angle for use in a wide range of uses.

Because Bar Lights can freely adjust their illuminating direction and angle to match the workpiece, they can provide the optimal image.

Illuminating image from direction A



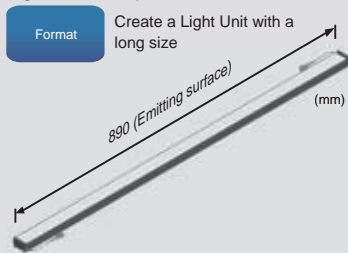
Illuminating image from direction B



Custom Orders

Please contact your sales representative.

E.g.: Different shape



Customizable items

- External/internal diameter
- Wavelength/color
- Increase output
- Cable length
- Illuminating angle
- Format/material
- Connector format
- Installation/mounting

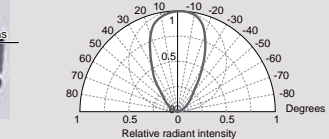
Bar Lights That Use Surface-Mounted LEDs

These are Bar Lights that use surface-mounted LEDs. We provide the narrow type, which performs convergent illumination for a narrow space, and the wide type (-WD) which illuminates a wide space.

Select the directional characteristics of a narrow type or wide type

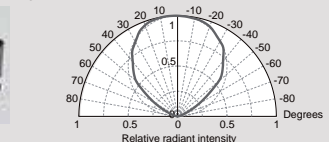
Directional characteristics of the Narrow Type (White)

Zoomed-in view of the emitting surface



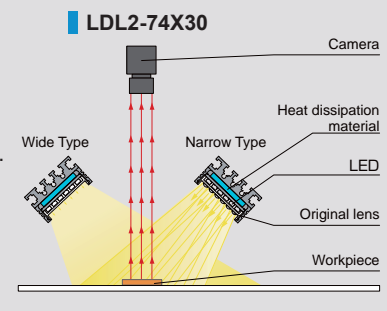
Directional characteristics of the Wide Type (White)

Zoomed-in view of the emitting surface



Example Configuration

Achieved light with a narrow directionality using the original lens located in front of the LEDs. Illuminates direct light from any angle.



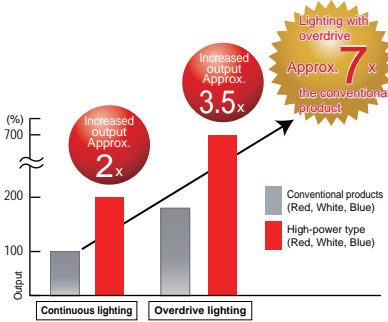
| | |
|------------------|---------------------------|
| LDR2 | Direct Lighting |
| LDR2-LA | Direct Lighting |
| LDR-LA1 | Direct Lighting |
| SQR | Direct Lighting |
| SQR-TP | Direct Lighting |
| HPR2 | Diffused Lighting |
| LFR | Diffused Lighting |
| LKR | Diffused Lighting |
| FPR | Diffused Lighting |
| FPQ2 | Diffused Lighting |
| LDL2 | Direct Lighting |
| LDLB | Direct Lighting |
| HLDL2 | Direct Lighting |
| HL | Direct Lighting |
| TH2 (5 types) | Diffused Lighting |
| TH | Diffused Lighting |
| LFL | Diffused Lighting |
| HPD2 | Diffused Lighting |
| LDM2 | Diffused Lighting |
| LAV | Diffused Lighting |
| PDM | Diffused Lighting |
| LFX3 | Diffused Lighting |
| LFX3-PT | Diffused Lighting |
| LFV3 | Diffused Lighting |
| MSU | Strobe/Colored Lighting |
| MFU | Strobe/Colored Lighting |
| PF | Strobe/Colored Lighting |
| HLDR-IP/ | Waterproof Lighting |
| HSL-PCL | Waterproof Lighting |
| UV2 | Ultraviolet Lighting |
| UV | Ultraviolet Lighting |
| LNSP-UV-FN | Ultraviolet Lighting |
| IR2 | Infrared Control Lighting |
| IU | Infrared Control Lighting |
| HLV3 | Spot Lighting, Etc. |
| HLV2 | Spot Lighting, Etc. |
| LV | Spot Lighting, Etc. |
| LSP | Spot Lighting, Etc. |
| HFS/HFR | Spot Lighting, Etc. |
| HLV3-NR | Spot Lighting, Etc. |
| HLV3-3M-RGB-4 | Spot Lighting, Etc. |
| HLV2-NR | Spot Lighting, Etc. |
| HLV2-3M-RGB-3W | Spot Lighting, Etc. |
| PFB3 | Spot Lighting, Etc. |
| PFB2 | Spot Lighting, Etc. |
| LNLP | Coaxial Units |
| LNSP2 | Coaxial Units |
| LNSP | Coaxial Units |
| LNSP-FN | Coaxial Units |
| LN/LN-HK | Coaxial Units |
| LNSD | Coaxial Units |
| LND2 | Coaxial Units |
| HLND | Coaxial Units |
| LT | Coaxial Units |
| LNV | Coaxial Units |
| LNDG | Coaxial Units |
| LNIS2 | Coaxial Units |
| LNIS | Coaxial Units |
| LNIS-FN | Coaxial Units |
| Telecentric Lens | Lenses |
| Macro Lens | Lenses |

Increased Brightness and Rich Variety of Sizes

For detailed information on the overdrive, refer to P.330.

The data included is for reference only. Actual values may vary.

Brightness comparison



Conventional product



Shutter speed: 1/10,000
Amount of light: 100% intensity

High-power type
Continuous lighting



Shutter speed: 1/10,000 Shutter speed: 1/18,000
Amount of light: 100% intensity Continuous lighting: 100% intensity

High-power type
Lighting with overdrive



Shutter speed: 1/18,000
Lighting with overdrive: 100% intensity

Standard product lineup

The same applies to Wide Types (End of the model name: -WD).

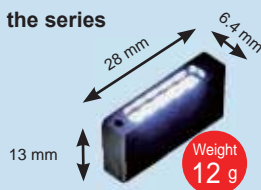
| Conventional product | | | High-power type | | |
|----------------------------|-------------------------------|-----------------------|------------------------|----------------|-----------------------|
| Model name | LED color | Emitting surface size | Model name | LED color | Emitting surface size |
| - | - | - | LDL2-19X4RD2/SW2/BL2 | Red/White/Blue | 19 x 4 mm |
| LDL2-33X8RD/SW/BL/GR/IR850 | Red/White/Blue/Green/Infrared | 33 x 8 mm | LDL2-33X8RD2/SW2/BL2 | | 33 x 8 mm |
| LDL2-41X16RD/SW/BL/GR | Red/White/Blue/Green | 41 x 16 mm | LDL2-41X16RD2/SW2/BL2 | | 41 x 16 mm |
| LDL2-80X16RD/SW/BL/GR | | 80 x 16 mm | LDL2-80X16RD2/SW2/BL2 | | 80 x 16 mm |
| LDL2-119X16RD/SW/BL/GR | - | 119 x 16 mm | LDL2-119X16RD2/SW2/BL2 | | 119 x 16 mm |
| - | - | - | LDL2-158X16RD2/SW2/BL2 | | 158 x 16 mm |
| - | - | - | LDL2-26X30RD2/SW2/BL2 | | 26 x 30 mm |
| - | - | - | LDL2-50X30RD2/SW2/BL2 | | 50 x 30 mm |
| LDL2-74X30RD/SW/BL/GR | Red/White/Blue/Green | 74 x 30 mm | LDL2-74X30RD2/SW2/BL2 | | 74 x 30 mm |
| - | - | - | LDL2-98X30RD2/SW2/BL2 | | 98 x 30 mm |
| - | - | - | LDL2-122X30RD2/SW2/BL2 | | 122 x 30 mm |
| LDL2-146X30RD/SW/BL/GR | Red/White/Blue/Green | 146 x 30 mm | LDL2-146X30RD2/SW2/BL2 | | 146 x 30 mm |
| LDL2-218X30RD/SW/BL/GR | | 218 x 30 mm | LDL2-218X30RD2/SW2/BL2 | | 218 x 30 mm |
| LDL2-266X30RD/SW/BL/GR | | 266 x 30 mm | LDL2-266X30RD2/SW2/BL2 | | 266 x 30 mm |

Shortest Bar Light in the series

LDL2-19X4 series



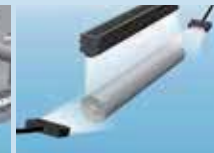
Applications:
Visual inspection of extremely small parts, etc.



Use it for installations in narrow devices or to save space on your manufacturing line.



Narrow spaces inside devices



As assistance lighting for other lights

Differences between conventional products and high-power types

| Changes | Conventional product | High-power type |
|------------------------------|---|--------------------------|
| Peak emitting wavelength | Red 635 nm / Blue 470 nm | Red 634 nm / Blue 467 nm |
| Correlated color temperature | White 6,600 K | White 7,800 K |
| Power consumption | Refer to the Lineup table. (P.49 to 54) | |
| Spectral distribution | Refer to the LED properties. (P.54) | |
| Directional characteristics | | |

Model name

| Conventional product | High-power type |
|---------------------------|----------------------------|
| (Example) LDL2-41X16SW | (Example) LDL2-41X16SW2 |
| LDL2-41X16SW-WD | LDL2-41X16SW2-WD |

Power consumption values are different between the conventional products and high-power type products. Before use, make sure that the total power consumption of the Light Units is within the output power capacity of the Control Unit. Optional accessories are applicable to the new products as well as to the conventional products of the same size. For details on the optional accessories that are applicable to the Light Units with the newly added size, refer to the lineup tables under "Options."

| | |
|----------------------------|---|
| Direct Lighting | LDR2 LDR2-LA LDR-LA1 SQR SQR-TP |
| Diffused Lighting | HPR2 LFR LKR FPR FFQ2 |
| Direct Lighting | LDL2 LDLB HLDL2 HL |
| Diffused Lighting | TH2 (5 types) TH LFL HPD2 LDM2 LAV PDM LFX3 LFX3-PT LFV3 |
| Collimated Lighting | MSU MFU |
| Strobe Lighting | PF |
| Water-proof Lighting | HLDR-IP/ HSL-PCL |
| Ultraviolet Lighting | UV2 UV LNSP-UV-FN |
| Infrared Lighting | IR2 |
| Intensity Control Lighting | IU |
| Spot Lighting, Etc. | HLV3 HLV2 LV LSP HFS/HFR HLV3-NR HLV3-3M-RGB-4 HLV2-NR HLV2-3M-RGB-3W PFB3 PFB2 |
| Convergent Lighting | LNLP LNSP2 LNSP Coaxial Units LNSP-FN LN/LN-HK |
| Diffused Lighting | LNSD LND2 HLND LT LNV |
| Oblique-Angled Lighting | LNDG LNIS2 LNIS LNIS-FN |
| Lenses | Telecentric Lens Macro Lens |

LDL2 Series



➤ Imaging Example: Imaging of Damage in Sheet Metals (Hairline Finishing)



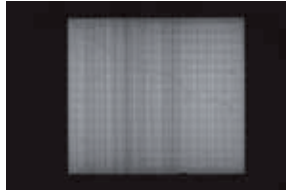
| | |
|---------------------|--|
| Description | Visual inspection |
| Workpiece | Aluminum sheets (hairline finishing) |
| Before the proposal | LED Bar Light |
| After the proposal | LDL2-74X30RD Proposed the optimal illuminating angle and illuminating direction |
| Result | Extracts only the damage |

Workpiece image



Aluminum sheets (hairline finishing)

LED Bar Light



Due to reflection from the hairline finishing surface, it is difficult to form an image of the damage.

LDL2-74X30RD



Surface reflection is reduced and a clear image of the damage can be made.

➤ Imaging Example: Imaging the Appearance of Confectionery Packaging

Workpiece image



Confectionery packaging

LED Ring Light



Due to reflection from the surface, it is difficult to form an image of the appearance.

LDL2-119X16SW



Surface reflection is removed and a clear image of the appearance can be made.

➤ Imaging Example: Imaging Engraved Characters on Plastic Surfaces

Workpiece image



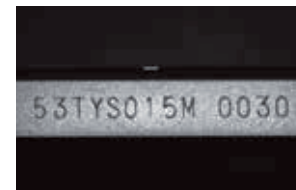
Digital video cassettes

LED Ring Light + Diffusion plate



It is difficult to observe the engraved characters due to uneven illumination.

LDL2-80X16RD2 + Diffusion plate



When you attach the diffusion plate to the Bar Light and illuminate the workpiece, the engraved characters are evenly and brightly captured.

➤ Imaging Example: Imaging the Appearance of Connector Pins

Workpiece image



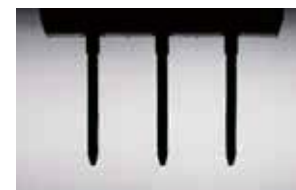
Connectors

LDL2-74X30SW2-WD



Illumination from the front of the workpiece allows you to observe the surface state of the connector.

LDL2-74X30SW2-WD + Diffusion plate

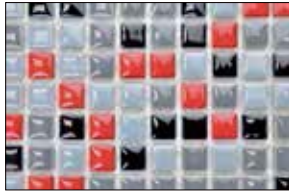


Illumination using a diffusion plate from behind the workpiece allows you to observe the appearance of the connector.

Imaging Example: Imaging the Surface and Appearance of Tiles

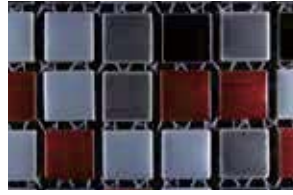


Workpiece image



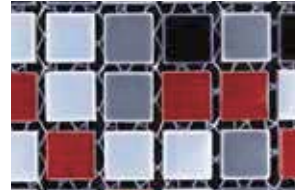
Tiles

LDL2-119X16SW2 (double use)



It is difficult to observe the surface and appearance of the tiles with a double use of the Bar Lights due to uneven illumination.

LDL2-119X16SW2 (quadruple use) + bracket



The Bar Lights which are mounted on the four sides of the bracket illuminate the surface and appearance of the tiles, so that they are captured brightly and evenly.

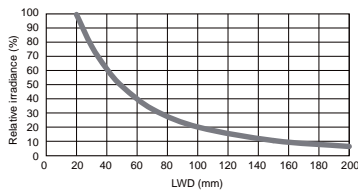
Data: Relative Irradiance Graph/Uniformity (Representative Example)

The data included is for reference only. Actual values may vary.

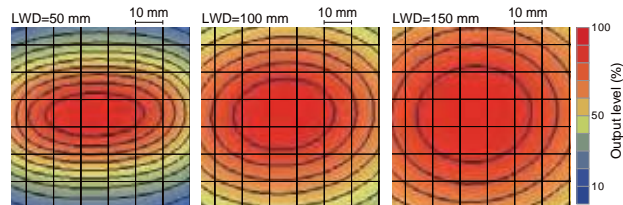
LDL2-74X30SW (Narrow type)

Relative irradiance graph^{*1} (LWD characteristics)^{*2}

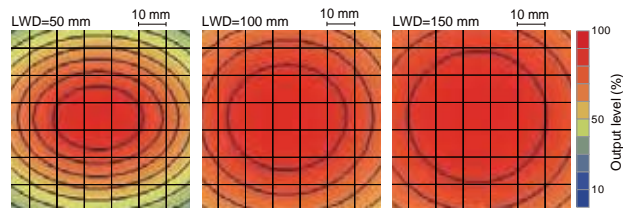
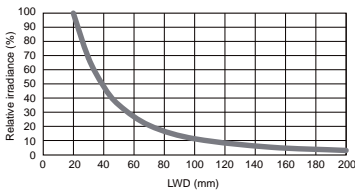
*1 Irradiance on the optical axis
*2 Illuminating distance from the Light Unit to the workpiece



Uniformity (Relative irradiance)



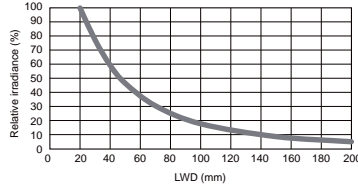
LDL2-74X30SW-WD (Wide type)



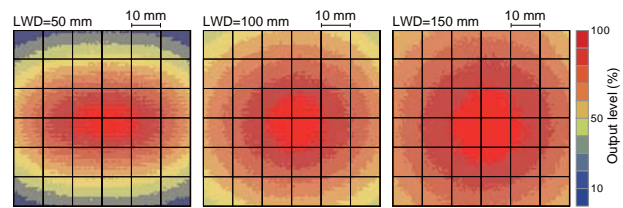
LDL2-74X30SW2 (Narrow type)

Relative irradiance graph^{*1} (LWD characteristics)^{*2}

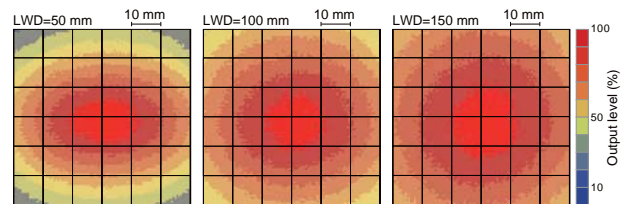
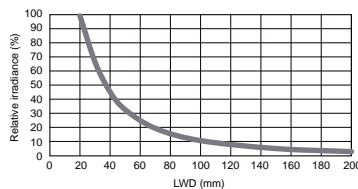
*1 Irradiance on the optical axis
*2 Illuminating distance from the Light Unit to the workpiece



Uniformity (Relative irradiance)



LDL2-74X30SW2-WD (Wide type)



Conventional products

New products

| | |
|-------------------|----------------|
| Direct Lighting | LDR2 |
| | LDR2-LA |
| Diffused Lighting | LDR-LA1 |
| | SQR |
| LDL2 | SQR-TP |
| | HPR2 |
| LDLB | LFR |
| | LKR |
| HLDL2 | FPR |
| | HL |
| TH2 (5 types) | FPO2 |
| | TH |
| LFL | LAV |
| | HPD2 |
| LDM2 | PDM |
| | LAV |
| LFX3 | LFX3 |
| | LFX3-PT |
| LFX3 | LFV3 |
| | MSU |
| MSFU | PF |
| | HLDR-IP/ |
| HSL-PCL | UV2 |
| | UV |
| LNSP-UV-FN | IR2 |
| | IU |
| HLV3 | HLV2 |
| | LV |
| LSP | HFS/HFR |
| | HLV3-3M-RGB-4 |
| HLV2-NR | HLV2-NR |
| | HLV2-3M-RGB-3W |
| PFB3 | PFB3 |
| | PFB2 |
| LNLP | LNSP2 |
| | LNSP |
| Coaxial Units | LNSP-FN |
| | LN/LN-HK |
| LNSD | LND2 |
| | HLND |
| LT | LNV |
| | LNDG |
| LNS2 | LNIS |
| | LNIS-FN |
| Telecentric Lens | Macro Lens |

LDL2 Series



Lineup (Standard Products - Conventional Products) “-WD” at the end of the model name: Wide type

| Model name | LED color | Emitting surface size | Power consumption | Peak wavelength / correlated color temperature | Options | Extension cables | Recommended Control Units | Weight |
|-----------------------|--------------------------------|-----------------------|-------------------|--|--|--|--|---------|
| Emitting width: 8 mm | LDL2-33X8RD* ¹ | Red | 24 V / 1.3 W | 635 nm | <input type="checkbox"/> Diffusion plate <input type="checkbox"/> Polarizing plate <input type="checkbox"/> Bracket | | <input type="checkbox"/> PD3 <input type="checkbox"/> CC-ST-1024 <input type="checkbox"/> PSB <input type="checkbox"/> POD ^{2,3,4} | 20 g |
| | LDL2-33X8SW* ¹ | White | | 6,600 K | | | | |
| | LDL2-33X8BL* ¹ | Blue | 24 V / 0.8 W | 470 nm | | | | |
| | LDL2-33X8GR* ¹ | Green | | 525 nm | | | | |
| | LDL2-33X8IR850* ^{1,2} | Infrared | 24 V / 1.3 W | 850 nm | | | | |
| Emitting width: 16 mm | LDL2-41X16RD(-WD) | Red | 24 V / 1.9 W | 635 nm | <input type="checkbox"/> Diffusion plate <input type="checkbox"/> Polarizing plate <input type="checkbox"/> Protective plate <input type="checkbox"/> Bracket | <input type="checkbox"/> FCB ⁵ Straight Cable <input type="checkbox"/> FCB-W ⁶ 2-branch Cable <input type="checkbox"/> FCB-F 4-branch Cable <input type="checkbox"/> FRCB Robot Cable | <input type="checkbox"/> PD3 <input type="checkbox"/> CC-ST-1024 <input type="checkbox"/> PSB <input type="checkbox"/> POD ³ | 50 g |
| | LDL2-41X16SW(-WD) | White | | 6,600 K | | | | |
| | LDL2-41X16BL(-WD) | Blue | | 470 nm | | | | |
| | LDL2-41X16GR(-WD) | Green | | 525 nm | | | | |
| | LDL2-80X16RD(-WD) | Red | 80x16 mm | 24 V / 3.8 W | | | | 635 nm |
| | LDL2-80X16SW(-WD) | White | | | | | | 6,600 K |
| | LDL2-80X16BL(-WD) | Blue | | | | | | 470 nm |
| | LDL2-80X16GR(-WD) | Green | | | | | | 525 nm |
| | LDL2-119X16RD(-WD) | Red | 119x16 mm | 24 V / 5.7 W | | | | 635 nm |
| | LDL2-119X16SW(-WD) | White | | | | | | 6,600 K |
| | LDL2-119X16BL(-WD) | Blue | | | | | | 470 nm |
| | LDL2-119X16GR(-WD) | Green | | | | | | 525 nm |
| Emitting width: 30 mm | LDL2-74X30RD(-WD) | Red | 24 V / 5.7 W | 635 nm | <input type="checkbox"/> Diffusion plate <input type="checkbox"/> Polarizing plate <input type="checkbox"/> Protective plate <input type="checkbox"/> Bracket | <input type="checkbox"/> FCB ⁵ Straight Cable <input type="checkbox"/> FCB-W ⁶ 2-branch Cable <input type="checkbox"/> FCB-F 4-branch Cable <input type="checkbox"/> FRCB Robot Cable | <input type="checkbox"/> PD3 <input type="checkbox"/> CC-ST-1024 <input type="checkbox"/> PSB <input type="checkbox"/> POD ³ | 100 g |
| | LDL2-74X30SW(-WD) | White | | 6,600 K | | | | |
| | LDL2-74X30BL(-WD) | Blue | | 470 nm | | | | |
| | LDL2-74X30GR(-WD) | Green | | 525 nm | | | | |
| | LDL2-146X30RD(-WD) | Red | 146x30 mm | 24 V / 12 W | | | | 635 nm |
| | LDL2-146X30SW(-WD) | White | | | | | | 6,600 K |
| | LDL2-146X30BL(-WD) | Blue | | | | | | 470 nm |
| | LDL2-146X30GR(-WD) | Green | | | | | | 525 nm |
| | LDL2-218X30RD(-WD) | Red | 218x30 mm | 24 V / 18 W | | | | 635 nm |
| | LDL2-218X30SW(-WD) | White | | | | | | 6,600 K |
| | LDL2-218X30BL(-WD) | Blue | | | | | | 470 nm |
| | LDL2-218X30GR(-WD) | Green | | | | | | 525 nm |
| LDL2-266X30RD(-WD) | Red | 266x30 mm | 24 V / 21 W | 635 nm | | | | |
| LDL2-266X30SW(-WD) | White | | | 6,600 K | | | | |
| LDL2-266X30BL(-WD) | Blue | | | 470 nm | | | | |
| LDL2-266X30GR(-WD) | Green | | | 525 nm | | | | |

Extension Cables ▶ P.308

Control Unit Selection Guide ▶ P.251

List of Control Unit Specifications ▶ P.253

*1 All LEDs of the LDL2-33X8 have wide type directional characteristics.

*2 Please inquire if you want to use in combination with a Strobe Control Unit (overdrive type).

▶ Lineup (Standard Products · High-Power Type)

"-WD" at the end of the model name: Wide type

| | Model name | LED color | Emitting surface size | Power consumption | Peak wavelength / correlated color temperature | Options | Extension cables | Recommended Control Units | Weight | | | |
|-----------------------|----------------------------|--------------------|-----------------------|-------------------|--|--|--|---|---------|---|---|------|
| E.W.: 4 mm | LDL2-19X4RD2* ¹ | Red | 19x4 mm | 24 V / 1.3 W | 634 nm | Diffusion plate | | PD3 CC-ST-1024 PSB POD* ² | 12 g | | | |
| | LDL2-19X4SW2* ¹ | White | | | 7,800 K | Polarizing plate | | | | | | |
| | LDL2-19X4BL2* ¹ | Blue | | 24 V / 1.1 W | 467 nm | Bracket* * We accept custom orders. | | | | | | |
| E.W.: 8 mm | LDL2-33X8RD2* ¹ | Red | 33x8 mm | 24 V / 2.6 W | 634 nm | Diffusion plate | | PD3 CC-ST-1024 PSB POD* ² | 20 g | | | |
| | LDL2-33X8SW2* ¹ | White | | | 7,800 K | Polarizing plate | | | | | | |
| | LDL2-33X8BL2* ¹ | Blue | | 24 V / 1.5 W | 467 nm | Bracket | | | | | | |
| Emitting width: 16 mm | LDL2-41X16RD2(-WD) | Red | 41x16 mm | 24 V / 3.8 W | 634 nm | Diffusion plate Polarizing plate Protective plate Bracket | FCB* ³ Straight Cable FCB-W* ⁴ 2-branch Cable FCB-F 4-branch Cable FRCB Robot Cable | PD3 CC-ST-1024 PSB POD* ² | 50 g | | | |
| | LDL2-41X16SW2(-WD) | White | | | 7,800 K | | | | | | | |
| | LDL2-41X16BL2(-WD) | Blue | | | 467 nm | | | | | | | |
| | LDL2-80X16RD2(-WD) | Red | 80x16 mm | 24 V / 7.6 W | 634 nm | | | | | | | |
| | LDL2-80X16SW2(-WD) | White | | | 7,800 K | | | | | | | |
| | LDL2-80X16BL2(-WD) | Blue | | | 467 nm | | | | | | | |
| | LDL2-119X16RD2(-WD) | Red | 119x16 mm | 24 V / 12 W | 634 nm | | | | | | | |
| | LDL2-119X16SW2(-WD) | White | | | 7,800 K | | | | | | | |
| | LDL2-119X16BL2(-WD) | Blue | | | 467 nm | | | | | | | |
| | LDL2-158X16RD2(-WD) | Red | 158x16 mm | 24 V / 16 W | 634 nm | | | | | | | |
| | LDL2-158X16SW2(-WD) | White | | | 7,800 K | | | | | | | |
| | LDL2-158X16BL2(-WD) | Blue | | | 467 nm | | | | | | | |
| | Emitting width: 30 mm | LDL2-26X30RD2(-WD) | Red | 26x30 mm | 24 V / 3.8 W | | | | 634 nm | Diffusion plate Polarizing plate Protective plate Bracket* * We accept custom orders for the brackets that can install four the Bar Lights. | PD3 CC-ST-1024 PSB POD* ² | 55 g |
| | | LDL2-26X30SW2(-WD) | White | | | | | | 7,800 K | | | |
| | | LDL2-26X30BL2(-WD) | Blue | | | | | | 467 nm | | | |
| LDL2-50X30RD2(-WD) | | Red | 50x30 mm | 24 V / 7.6 W | 634 nm | | | | | | | |
| LDL2-50X30SW2(-WD) | | White | | | 7,800 K | | | | | | | |
| LDL2-50X30BL2(-WD) | | Blue | | | 467 nm | | | | | | | |
| LDL2-74X30RD2(-WD) | | Red | 74x30 mm | 24 V / 12 W | 634 nm | | | | | | | |
| LDL2-74X30SW2(-WD) | | White | | | 7,800 K | | | | | | | |
| LDL2-74X30BL2(-WD) | | Blue | | | 467 nm | | | | | | | |
| LDL2-98X30RD2(-WD) | | Red | 98x30 mm | 24 V / 16 W | 634 nm | | | | | | | |
| LDL2-98X30SW2(-WD) | | White | | | 7,800 K | | | | | | | |
| LDL2-98X30BL2(-WD) | | Blue | | | 467 nm | | | | | | | |
| LDL2-122X30RD2(-WD) | | Red | 122x30 mm | 24 V / 19 W | 634 nm | | | | | | | |
| LDL2-122X30SW2(-WD) | | White | | | 7,800 K | | | | | | | |
| LDL2-122X30BL2(-WD) | | Blue | | | 467 nm | | | | | | | |
| LDL2-146X30RD2(-WD) | Red | 146x30 mm | 24 V / 23 W | 634 nm | | | | | | | | |
| LDL2-146X30SW2(-WD) | White | | | 7,800 K | | | | | | | | |
| LDL2-146X30BL2(-WD) | Blue | | | 467 nm | | | | | | | | |
| LDL2-218X30RD2(-WD) | Red | 218x30 mm | 24 V / 35 W | 634 nm | | | | | | | | |
| LDL2-218X30SW2(-WD) | White | | | 7,800 K | | | | | | | | |
| LDL2-218X30BL2(-WD) | Blue | | | 467 nm | | | | | | | | |
| LDL2-266X30RD2(-WD) | Red | 266x30 mm | 24 V / 42 W | 634 nm | | | | | | | | |
| LDL2-266X30SW2(-WD) | White | | | 7,800 K | | | | | | | | |
| LDL2-266X30BL2(-WD) | Blue | | | 467 nm | | | | | | | | |

Extension Cables ▶ P.308

Control Unit Selection Guide ▶ P.251

List of Control Unit Specifications ▶ P.253

*1 All LEDs of the LDL2-19X4 and LDL2-33X8 have wide type directional characteristics.

| | |
|-------------------------------------|---|
| Direct Lighting | LDR2 LDR2-LA LDR-LA1 SQR SQR-TP |
| Diffused Lighting | HPR2 LFR LKR FPR FFQ2 |
| Direct Lighting | LDL2 LDLB HLDL2 HL |
| Diffused Lighting | TH2 (5 types) TH LFL HPD2 LDM2 LAV PDM LFX3 LFX3-PT LFV3 |
| Coaxial Lighting | MSU MFU |
| Strobe Lighting | PF |
| Water-proof Lighting | HLDR-IP/ HSL-PCL |
| Ultraviolet Lighting | UV2 UV LNSP-UV-FN |
| Intensity/Infrared Control Lighting | IR2 IU |
| Spot Lighting, Etc. | HLV3 HLV2 LV LSP HFS/HFR HLV3-NR HLV3-3M-RGB-4 HLV2-NR HLV2-3M-RGB-3W PFBR PFB3 PFB2 |
| Convergent Lighting | LNLP LNSP2 LNSP Coaxial Units LNSP-FN LN/LN-HK |
| Diffused Lighting | LNSD LND2 HLND LT LNV |
| Oblique/Angled Lighting | LNDG LNIS2 LNIS LNIS-FN |
| Lenses | Telecentric Lens Macro Lens |

LDL2 Series



Lineup (Special Orders - Conventional Products) “-WD” at the end of the model name: Wide type

| Model name | LED color | Emitting surface size | Power consumption | Peak wavelength / correlated color temperature | Options | Extension cables | Recommended Control Units | Weight |
|--------------------|-----------|-----------------------|-------------------|--|--------------------------------------|--|---|--------|
| LDL2-158X16RD(-WD) | Red | 158x16 mm | 24 V / 7.6 W | 635 nm | Please inquire for more information. | FCB ^{#2} Straight Cable FCB-W ^{#3} 2-branch Cable FCB-F 4-branch Cable FRCB Robot Cable | PD3 PSB CC-ST-1024 POD ^{#1} | 120 g |
| LDL2-158X16SW(-WD) | White | | | 6,600 K | | | | |
| LDL2-158X16BL(-WD) | Blue | | | 470 nm | | | | |
| LDL2-158X16GR(-WD) | Green | | | 525 nm | | | | |
| LDL2-197X16RD(-WD) | Red | 197x16 mm | 24 V / 9.5 W | 635 nm | | | | |
| LDL2-197X16SW(-WD) | White | | | 6,600 K | | | | |
| LDL2-197X16BL(-WD) | Blue | | | 470 nm | | | | |
| LDL2-197X16GR(-WD) | Green | | | 525 nm | | | | |
| LDL2-236X16RD(-WD) | Red | 236x16 mm | 24 V / 12 W | 635 nm | | | | |
| LDL2-236X16SW(-WD) | White | | | 6,600 K | | | | |
| LDL2-236X16BL(-WD) | Blue | | | 470 nm | | | | |
| LDL2-236X16GR(-WD) | Green | | | 525 nm | | | | |
| LDL2-275X16RD(-WD) | Red | 275x16 mm | 24 V / 14 W | 635 nm | | | | |
| LDL2-275X16SW(-WD) | White | | | 6,600 K | | | | |
| LDL2-275X16BL(-WD) | Blue | | | 470 nm | | | | |
| LDL2-275X16GR(-WD) | Green | | | 525 nm | | | | |
| LDL2-314X16RD(-WD) | Red | 314x16 mm | 24 V / 16 W | 635 nm | | | | |
| LDL2-314X16SW(-WD) | White | | | 6,600 K | | | | |
| LDL2-314X16BL(-WD) | Blue | | | 470 nm | | | | |
| LDL2-314X16GR(-WD) | Green | | | 525 nm | | | | |
| LDL2-353X16RD(-WD) | Red | 353x16 mm | 24 V / 18 W | 635 nm | | | | |
| LDL2-353X16SW(-WD) | White | | | 6,600 K | | | | |
| LDL2-353X16BL(-WD) | Blue | | | 470 nm | | | | |
| LDL2-353X16GR(-WD) | Green | | | 525 nm | | | | |
| LDL2-392X16RD(-WD) | Red | 392x16 mm | 24 V / 19 W | 635 nm | | | | |
| LDL2-392X16SW(-WD) | White | | | 6,600 K | | | | |
| LDL2-392X16BL(-WD) | Blue | | | 470 nm | | | | |
| LDL2-392X16GR(-WD) | Green | | | 525 nm | | | | |
| LDL2-431X16RD(-WD) | Red | 431x16 mm | 24 V / 21 W | 635 nm | | | | |
| LDL2-431X16SW(-WD) | White | | | 6,600 K | | | | |
| LDL2-431X16BL(-WD) | Blue | | | 470 nm | | | | |
| LDL2-431X16GR(-WD) | Green | | | 525 nm | | | | |
| LDL2-470X16RD(-WD) | Red | 470x16 mm | 24 V / 23 W | 635 nm | | | | |
| LDL2-470X16SW(-WD) | White | | | 6,600 K | | | | |
| LDL2-470X16BL(-WD) | Blue | | | 470 nm | | | | |
| LDL2-470X16GR(-WD) | Green | | | 525 nm | | | | |
| LDL2-509X16RD(-WD) | Red | 509x16 mm | 24 V / 25 W | 635 nm | | | | |
| LDL2-509X16SW(-WD) | White | | | 6,600 K | | | | |
| LDL2-509X16BL(-WD) | Blue | | | 470 nm | | | | |
| LDL2-509X16GR(-WD) | Green | | | 525 nm | | | | |
| LDL2-26X30RD(-WD) | Red | 26x30 mm | 24 V / 1.9 W | 635 nm | | | | |
| LDL2-26X30SW(-WD) | White | | | 6,600 K | | | | |
| LDL2-26X30BL(-WD) | Blue | | | 470 nm | | | | |
| LDL2-26X30GR(-WD) | Green | | | 525 nm | | | | |
| LDL2-50X30RD(-WD) | Red | 50x30 mm | 24 V / 3.8 W | 635 nm | | | | |
| LDL2-50X30SW(-WD) | White | | | 6,600 K | | | | |
| LDL2-50X30BL(-WD) | Blue | | | 470 nm | | | | |
| LDL2-50X30GR(-WD) | Green | | | 525 nm | | | | |
| LDL2-98X30RD(-WD) | Red | 98x30 mm | 24 V / 7.6 W | 635 nm | | | | |
| LDL2-98X30SW(-WD) | White | | | 6,600 K | | | | |
| LDL2-98X30BL(-WD) | Blue | | | 470 nm | | | | |
| LDL2-98X30GR(-WD) | Green | | | 525 nm | | | | |
| LDL2-122X30RD(-WD) | Red | 122x30 mm | 24 V / 9.5 W | 635 nm | | | | |
| LDL2-122X30SW(-WD) | White | | | 6,600 K | | | | |
| LDL2-122X30BL(-WD) | Blue | | | 470 nm | | | | |
| LDL2-122X30GR(-WD) | Green | | | 525 nm | | | | |

Emitting width: 16 mm

Emitting width: 30 mm

Please inquire for more information.

^{#2} The cables with a model name that ends with “-ME7”, “-EL2”, “-PF”, or “-PF-EL9” are not included.
^{#3} The cables with a model name that ends with “-EL2” are not included.

- LDR2
- LDR2-LA
- LDR-LA1
- SQR
- SQR-TP
- HPR2
- LFR
- LKR
- FPR
- FQ2
- LDL2**
- LDLB
- HLDL2
- HL
- TH2 (5 types)
- TH
- LFL
- HPD2
- DM2
- LAV
- PDM
- LFX3
- LFX3-PT
- LFV3
- MSU
- MFU
- PF
- HLDR-IP/ HSL-PCL
- UV2
- UV
- LNSP-UV-FN
- IR2
- IU
- HLV3
- HLV2
- LV
- LSP
- HFS/HFR
- HLV3-NR
- HLV3-3M-RGB-4
- HLV2-NR
- HLV2-3M-RGB-3W
- PFBR
- PFB3
- PFB2
- LNLP
- LNSP2
- LNSP
- Coaxial Units
- LNSP-FN
- LN/LN-HK
- LNSD
- LND2
- HLND
- LT
- LNV
- LNDG
- LNIS2
- LNIS
- LNIS-FN
- Telecentric Lens
- Macro Lens

▶ **Lineup (Special Orders - Conventional Products)** “-WD” at the end of the model name: Wide type

| Model name | LED color | Emitting surface size | Power consumption | Peak wavelength / correlated color temperature | Options | Extension cables | Recommended Control Units | Weight |
|--------------------|-----------|-----------------------|-------------------|--|--------------------------------------|------------------|---------------------------|--------|
| LDL2-170X30RD(-WD) | Red | 170x30 mm | 24 V / 14 W | 635 nm | Please inquire for more information. | | | 200 g |
| LDL2-170X30SW(-WD) | White | | | 6,600 K | | | | |
| LDL2-170X30BL(-WD) | Blue | | | 470 nm | | | | |
| LDL2-170X30GR(-WD) | Green | | | 525 nm | | | | |
| LDL2-194X30RD(-WD) | Red | 194x30 mm | 24 V / 16 W | 635 nm | | | | |
| LDL2-194X30SW(-WD) | White | | | 6,600 K | | | | |
| LDL2-194X30BL(-WD) | Blue | | | 470 nm | | | | |
| LDL2-194X30GR(-WD) | Green | | | 525 nm | | | | |
| LDL2-242X30RD(-WD) | Red | 242x30 mm | 24 V / 19 W | 635 nm | | | | |
| LDL2-242X30SW(-WD) | White | | | 6,600 K | | | | |
| LDL2-242X30BL(-WD) | Blue | | | 470 nm | | | | |
| LDL2-242X30GR(-WD) | Green | | | 525 nm | | | | |
| LDL2-290X30RD(-WD) | Red | 290x30 mm | 24 V / 23 W | 635 nm | | | | |
| LDL2-290X30SW(-WD) | White | | | 6,600 K | | | | |
| LDL2-290X30BL(-WD) | Blue | | | 470 nm | | | | |
| LDL2-290X30GR(-WD) | Green | | | 525 nm | | | | |
| LDL2-314X30RD(-WD) | Red | 314x30 mm | 24 V / 25 W | 635 nm | | | | |
| LDL2-314X30SW(-WD) | White | | | 6,600 K | | | | |
| LDL2-314X30BL(-WD) | Blue | | | 470 nm | | | | |
| LDL2-314X30GR(-WD) | Green | | | 525 nm | | | | |
| LDL2-338X30RD(-WD) | Red | 338x30 mm | 24 V / 27 W | 635 nm | | | | |
| LDL2-338X30SW(-WD) | White | | | 6,600 K | | | | |
| LDL2-338X30BL(-WD) | Blue | | | 470 nm | | | | |
| LDL2-338X30GR(-WD) | Green | | | 525 nm | | | | |
| LDL2-362X30RD(-WD) | Red | 362x30 mm | 24 V / 29 W | 635 nm | | | | |
| LDL2-362X30SW(-WD) | White | | | 6,600 K | | | | |
| LDL2-362X30BL(-WD) | Blue | | | 470 nm | | | | |
| LDL2-362X30GR(-WD) | Green | | | 525 nm | | | | |
| LDL2-386X30RD(-WD) | Red | 386x30 mm | 24 V / 31 W | 635 nm | | | | |
| LDL2-386X30SW(-WD) | White | | | 6,600 K | | | | |
| LDL2-386X30BL(-WD) | Blue | | | 470 nm | | | | |
| LDL2-386X30GR(-WD) | Green | | | 525 nm | | | | |
| LDL2-410X30RD(-WD) | Red | 410x30 mm | 24 V / 33 W | 635 nm | | | | |
| LDL2-410X30SW(-WD) | White | | | 6,600 K | | | | |
| LDL2-410X30BL(-WD) | Blue | | | 470 nm | | | | |
| LDL2-410X30GR(-WD) | Green | | | 525 nm | | | | |
| LDL2-434X30RD(-WD) | Red | 434x30 mm | 24 V / 35 W | 635 nm | | | | |
| LDL2-434X30SW(-WD) | White | | | 6,600 K | | | | |
| LDL2-434X30BL(-WD) | Blue | | | 470 nm | | | | |
| LDL2-434X30GR(-WD) | Green | | | 525 nm | | | | |
| LDL2-458X30RD(-WD) | Red | 458x30 mm | 24 V / 37 W | 635 nm | | | | |
| LDL2-458X30SW(-WD) | White | | | 6,600 K | | | | |
| LDL2-458X30BL(-WD) | Blue | | | 470 nm | | | | |
| LDL2-458X30GR(-WD) | Green | | | 525 nm | | | | |
| LDL2-482X30RD(-WD) | Red | 482x30 mm | 24 V / 38 W | 635 nm | | | | |
| LDL2-482X30SW(-WD) | White | | | 6,600 K | | | | |
| LDL2-482X30BL(-WD) | Blue | | | 470 nm | | | | |
| LDL2-482X30GR(-WD) | Green | | | 525 nm | | | | |
| LDL2-506X30RD(-WD) | Red | 506x30 mm | 24 V / 40 W | 635 nm | | | | |
| LDL2-506X30SW(-WD) | White | | | 6,600 K | | | | |
| LDL2-506X30BL(-WD) | Blue | | | 470 nm | | | | |
| LDL2-506X30GR(-WD) | Green | | | 525 nm | | | | |

Emitting width: 30 mm

Please inquire for more information.

*2 The cables with a model name that ends with “-ME7”, “-EL2”, “-PF”, or “-PF-EL9” are not included.
*3 The cables with a model name that ends with “-EL2” are not included.

| | |
|---------------------------|------------------|
| Direct Lighting | LDR2 |
| | LDR2-LA |
| | LDR-LA1 |
| | SQR |
| Diffused Lighting | SQR-TP |
| | HPR2 |
| | LFR |
| | LKR |
| Direct Lighting | FPR |
| | FFQ2 |
| | LDL2 |
| | LDLB |
| Diffused Lighting | HLDL2 |
| | HL |
| | TH2 (5 types) |
| | TH |
| Diffused Lighting | LFL |
| | HPD2 |
| | LDM2 |
| | LAV |
| Coaxial Lighting | PDM |
| | LFX3 |
| | LFX3-PT |
| | LFV3 |
| Strobe Lighting | MSU |
| | MFU |
| Water-proof Lighting | PF |
| | HLDR-IP/ HSL-PCL |
| Ultraviolet Lighting | UV2 |
| | UV |
| Infrared Control Lighting | LNSP-UV-FN |
| | IR2 |
| Spot Lighting, Etc. | IU |
| | HLV3 |
| | HLV2 |
| | LV |
| Convergent Lighting | LSP |
| | HFS/HFR |
| | HLV3-NR |
| | HLV3-3M-RGB-4 |
| Diffused Lighting | HLV2-NR |
| | HLV2-3M-RGB-3W |
| | PFBR |
| | PFB3 |
| Oblique/Angled Lighting | PFB2 |
| | LNLP |
| | LNSP2 |
| | LNSP |
| Lenses | Coaxial Units |
| | LNSP-FN |
| | LN/LN-HK |
| | LNLD |
| Lenses | LND2 |
| | HLND |
| | LT |
| | LNV |
| Lenses | LNDG |
| | LNIS2 |
| | LNIS |
| | LNIS-FN |
| Lenses | Telecentric Lens |
| | Macro Lens |

LDL2 Series



Lineup (Special Orders · High-Power Type)

“-WD” at the end of the model name: Wide type

| Model name | LED color | Emitting surface size | Power consumption | Peak wavelength / correlated color temperature | Options | Extension cables | Recommended Control Units | Weight | | | | | | | | | |
|---------------------|-----------|-----------------------|-------------------|--|--------------------------------------|------------------|---|--------------------------------------|--|---|--------------------------------------|--|---|--------------------------------------|--|---|-------|
| LDL2-197X16RD2(-WD) | Red | 197x16 mm | 24 V / 19 W | 634 nm | Please inquire for more information. | | <div style="display: flex; justify-content: space-around;"> <div style="border: 1px solid black; padding: 2px;">PD3</div> <div style="border: 1px solid black; padding: 2px;">PSB</div> <div style="border: 1px solid black; padding: 2px;">POD*¹</div> </div> | 145 g | | | | | | | | | |
| LDL2-197X16SW2(-WD) | White | | | 7,800 K | | | | | | | | | | | | | |
| LDL2-197X16BL2(-WD) | Blue | | | 467 nm | | | | | | | | | | | | | |
| LDL2-236X16RD2(-WD) | Red | 236x16 mm | 24 V / 23 W | 634 nm | | | | Please inquire for more information. | | <div style="display: flex; justify-content: space-around;"> <div style="border: 1px solid black; padding: 2px;">PD3</div> <div style="border: 1px solid black; padding: 2px;">PSB</div> <div style="border: 1px solid black; padding: 2px;">POD*¹</div> </div> | 170 g | | | | | | |
| LDL2-236X16SW2(-WD) | White | | | 7,800 K | | | | | | | | | | | | | |
| LDL2-236X16BL2(-WD) | Blue | | | 467 nm | | | | | | | | | | | | | |
| LDL2-275X16RD2(-WD) | Red | 275x16 mm | 24 V / 27 W | 634 nm | | | | | | | Please inquire for more information. | | <div style="display: flex; justify-content: space-around;"> <div style="border: 1px solid black; padding: 2px;">PD3</div> <div style="border: 1px solid black; padding: 2px;">PSB</div> <div style="border: 1px solid black; padding: 2px;">POD*¹</div> </div> | 195 g | | | |
| LDL2-275X16SW2(-WD) | White | | | 7,800 K | | | | | | | | | | | | | |
| LDL2-275X16BL2(-WD) | Blue | | | 467 nm | | | | | | | | | | | | | |
| LDL2-314X16RD2(-WD) | Red | 314x16 mm | 24 V / 31 W | 634 nm | | | | | | | | | | Please inquire for more information. | | <div style="display: flex; justify-content: space-around;"> <div style="border: 1px solid black; padding: 2px;">PD3</div> <div style="border: 1px solid black; padding: 2px;">PSB</div> <div style="border: 1px solid black; padding: 2px;">POD*¹</div> </div> | 220 g |
| LDL2-314X16SW2(-WD) | White | | | 7,800 K | | | | | | | | | | | | | |
| LDL2-314X16BL2(-WD) | Blue | | | 467 nm | | | | | | | | | | | | | |
| LDL2-353X16RD2(-WD) | Red | 353x16 mm | 24 V / 35 W | 634 nm | Please inquire for more information. | | <div style="display: flex; justify-content: space-around;"> <div style="border: 1px solid black; padding: 2px;">PD3</div> <div style="border: 1px solid black; padding: 2px;">PSB</div> <div style="border: 1px solid black; padding: 2px;">POD*¹</div> </div> | | | | | | | | | | 245 g |
| LDL2-353X16SW2(-WD) | White | | | 7,800 K | | | | | | | | | | | | | |
| LDL2-353X16BL2(-WD) | Blue | | | 467 nm | | | | | | | | | | | | | |
| LDL2-392X16RD2(-WD) | Red | 392x16 mm | 24 V / 38 W | 634 nm | | | | Please inquire for more information. | | <div style="display: flex; justify-content: space-around;"> <div style="border: 1px solid black; padding: 2px;">PD3</div> <div style="border: 1px solid black; padding: 2px;">PSB</div> <div style="border: 1px solid black; padding: 2px;">POD*¹</div> </div> | | | | | | | 270 g |
| LDL2-392X16SW2(-WD) | White | | | 7,800 K | | | | | | | | | | | | | |
| LDL2-392X16BL2(-WD) | Blue | | | 467 nm | | | | | | | | | | | | | |
| LDL2-431X16RD2(-WD) | Red | 431x16 mm | 24 V / 42 W | 634 nm | | | | | | | Please inquire for more information. | | <div style="display: flex; justify-content: space-around;"> <div style="border: 1px solid black; padding: 2px;">PD3</div> <div style="border: 1px solid black; padding: 2px;">PSB</div> <div style="border: 1px solid black; padding: 2px;">POD*¹</div> </div> | | | | 295 g |
| LDL2-431X16SW2(-WD) | White | | | 7,800 K | | | | | | | | | | | | | |
| LDL2-431X16BL2(-WD) | Blue | | | 467 nm | | | | | | | | | | | | | |
| LDL2-470X16RD2(-WD) | Red | 470x16 mm | 24 V / 46 W | 634 nm | | | | | | | | | | Please inquire for more information. | | <div style="display: flex; justify-content: space-around;"> <div style="border: 1px solid black; padding: 2px;">PD3</div> <div style="border: 1px solid black; padding: 2px;">PSB</div> <div style="border: 1px solid black; padding: 2px;">POD*¹</div> </div> | 320 g |
| LDL2-470X16SW2(-WD) | White | | | 7,800 K | | | | | | | | | | | | | |
| LDL2-470X16BL2(-WD) | Blue | | | 467 nm | | | | | | | | | | | | | |
| LDL2-509X16RD2(-WD) | Red | 509x16 mm | 24 V / 50 W | 634 nm | Please inquire for more information. | | <div style="display: flex; justify-content: space-around;"> <div style="border: 1px solid black; padding: 2px;">PD3-10024-8</div> <div style="border: 1px solid black; padding: 2px;">POD*¹</div> </div> | | | | | | | | | | 345 g |
| LDL2-509X16SW2(-WD) | White | | | 7,800 K | | | | | | | | | | | | | |
| LDL2-509X16BL2(-WD) | Blue | | | 467 nm | | | | | | | | | | | | | |
| LDL2-170X30RD2(-WD) | Red | 170x30 mm | 24 V / 27 W | 634 nm | | | | Please inquire for more information. | | <div style="display: flex; justify-content: space-around;"> <div style="border: 1px solid black; padding: 2px;">PD3</div> <div style="border: 1px solid black; padding: 2px;">PSB</div> <div style="border: 1px solid black; padding: 2px;">POD*¹</div> </div> | | | | | | | 200 g |
| LDL2-170X30SW2(-WD) | White | | | 7,800 K | | | | | | | | | | | | | |
| LDL2-170X30BL2(-WD) | Blue | | | 467 nm | | | | | | | | | | | | | |
| LDL2-194X30RD2(-WD) | Red | 194x30 mm | 24 V / 31 W | 634 nm | | | | | | | Please inquire for more information. | | <div style="display: flex; justify-content: space-around;"> <div style="border: 1px solid black; padding: 2px;">PD3</div> <div style="border: 1px solid black; padding: 2px;">PSB</div> <div style="border: 1px solid black; padding: 2px;">POD*¹</div> </div> | | | | 225 g |
| LDL2-194X30SW2(-WD) | White | | | 7,800 K | | | | | | | | | | | | | |
| LDL2-194X30BL2(-WD) | Blue | | | 467 nm | | | | | | | | | | | | | |
| LDL2-242X30RD2(-WD) | Red | 242x30 mm | 24 V / 38 W | 634 nm | | | | | | | | | | Please inquire for more information. | | <div style="display: flex; justify-content: space-around;"> <div style="border: 1px solid black; padding: 2px;">PD3</div> <div style="border: 1px solid black; padding: 2px;">PSB</div> <div style="border: 1px solid black; padding: 2px;">POD*¹</div> </div> | 275 g |
| LDL2-242X30SW2(-WD) | White | | | 7,800 K | | | | | | | | | | | | | |
| LDL2-242X30BL2(-WD) | Blue | | | 467 nm | | | | | | | | | | | | | |
| LDL2-290X30RD2(-WD) | Red | 290x30 mm | 24 V / 46 W | 634 nm | Please inquire for more information. | | <div style="display: flex; justify-content: space-around;"> <div style="border: 1px solid black; padding: 2px;">PD3</div> <div style="border: 1px solid black; padding: 2px;">PSB</div> <div style="border: 1px solid black; padding: 2px;">POD*¹</div> </div> | | | | | | | | | | 325 g |
| LDL2-290X30SW2(-WD) | White | | | 7,800 K | | | | | | | | | | | | | |
| LDL2-290X30BL2(-WD) | Blue | | | 467 nm | | | | | | | | | | | | | |
| LDL2-314X30RD2(-WD) | Red | 314x30 mm | 24 V / 50 W | 634 nm | | | | Please inquire for more information. | | <div style="display: flex; justify-content: space-around;"> <div style="border: 1px solid black; padding: 2px;">PD3-10024-8</div> <div style="border: 1px solid black; padding: 2px;">POD*¹</div> </div> | | | | | | | 350 g |
| LDL2-314X30SW2(-WD) | White | | | 7,800 K | | | | | | | | | | | | | |
| LDL2-314X30BL2(-WD) | Blue | | | 467 nm | | | | | | | | | | | | | |

Please inquire for more information.

- FCB*² Straight Cable
- FCB-W*³ 2-branch Cable
- FCB-F 4-branch Cable
- FRCB Robot Cable

*2 The cables with a model name that ends with “-ME7”, “-EL2”, “-PF”, or “-PF-EL9” are not included.
*3 The cables with a model name that ends with “-EL2” are not included.

Extension Cables ▶ P.308

Control Unit Selection Guide ▶ P.251

List of Control Unit Specifications ▶ P.253

▶ **Lineup (Special Orders · High-Power Type)**

"-WD" at the end of the model name: Wide type

| Model name | LED color | Emitting surface size | Power consumption | Peak wavelength / correlated color temperature | Options | Extension cables | Recommended Control Units | Weight | | | | | |
|-----------------------------------|-----------|-----------------------|-------------------|--|---|---|---|---|---|---|------------------------|----------------|-------|
| LDL2-338X30RD2(-WD) | Red | 338x30 mm | 24 V / 53 W | 634 nm | Please inquire for more information. | FCB ⁺³ Straight Cable | PD3-10024-8 | 375 g | | | | | |
| LDL2-338X30SW2(-WD) | White | | | 7,800 K | | | | | FCB-W ⁺⁴ 2-branch Cable | | | | |
| LDL2-338X30BL2(-WD) | Blue | | | 467 nm | | | | | | | | | |
| LDL2-362X30RD2(-WD) | Red | 362x30 mm | 24 V / 57 W | 634 nm | | FCB-F 4-branch Cable | PD3-10024-8 | 400 g | | | | | |
| LDL2-362X30SW2(-WD) | White | | | 7,800 K | | | | | FRCB Robot Cable | | | | |
| LDL2-362X30BL2(-WD) | Blue | | | 467 nm | | | | | | | | | |
| LDL2-386X30RD2(-WD)* ¹ | Red | 386x30 mm | 24 V / 61 W | 634 nm | | *3 The cables with a model name that ends with "-ME7", "-EL2", "-PF", or "-PP-EL9" are not included. *4 The cables with a model name that ends with "-EL2" are not included. | FCB-W ⁺⁴ 2-branch Cable | POD-22024-4-PEI* ² | 425 g | | | | |
| LDL2-386X30SW2(-WD)* ¹ | White | | | 7,800 K | | | | | | | | | |
| LDL2-386X30BL2(-WD)* ¹ | Blue | | | 467 nm | | | | | | | | | |
| LDL2-410X30RD2(-WD)* ¹ | Red | 410x30 mm | 24 V / 65 W | 634 nm | | | *3 The cables with a model name that ends with "-ME7", "-EL2", "-PF", or "-PP-EL9" are not included. *4 The cables with a model name that ends with "-EL2" are not included. | FCB-F 4-branch Cable | PD3-10024-8 | 450 g | | | |
| LDL2-410X30SW2(-WD)* ¹ | White | | | 7,800 K | | | | | | | | | |
| LDL2-410X30BL2(-WD)* ¹ | Blue | | | 467 nm | | | | | | | | | |
| LDL2-434X30RD2(-WD)* ¹ | Red | 434x30 mm | 24 V / 69 W | 634 nm | | | | *3 The cables with a model name that ends with "-ME7", "-EL2", "-PF", or "-PP-EL9" are not included. *4 The cables with a model name that ends with "-EL2" are not included. | FRCB Robot Cable | POD-22024-4-PEI* ² | 475 g | | |
| LDL2-434X30SW2(-WD)* ¹ | White | | | 7,800 K | | | | | | | | | |
| LDL2-434X30BL2(-WD)* ¹ | Blue | | | 467 nm | | | | | | | | | |
| LDL2-458X30RD2(-WD)* ¹ | Red | 458x30 mm | 24 V / 72 W | 634 nm | | | | | *3 The cables with a model name that ends with "-ME7", "-EL2", "-PF", or "-PP-EL9" are not included. *4 The cables with a model name that ends with "-EL2" are not included. | FCB-EL2 Straight Cable | PSB4-30024-PEI | 500 g | |
| LDL2-458X30SW2(-WD)* ¹ | White | | | 7,800 K | | | | | | | | | |
| LDL2-458X30BL2(-WD)* ¹ | Blue | | | 467 nm | | | | | | | | | |
| LDL2-482X30RD2(-WD)* ¹ | Red | 482x30 mm | 24 V / 76 W | 634 nm | *3 The cables with a model name that ends with "-ME7", "-EL2", "-PF", or "-PP-EL9" are not included. *4 The cables with a model name that ends with "-EL2" are not included. | | | | | FCB-W-EL2 2-branch Cable | PSB4-30024-PEI | 525 g | |
| LDL2-482X30SW2(-WD)* ¹ | White | | | 7,800 K | | | | | | | | | |
| LDL2-482X30BL2(-WD)* ¹ | Blue | | | 467 nm | | | | | | | | | |
| LDL2-506X30RD2(-WD)* ¹ | Red | 506x30 mm | 24 V / 80 W | 634 nm | | | | | | *3 The cables with a model name that ends with "-ME7", "-EL2", "-PF", or "-PP-EL9" are not included. *4 The cables with a model name that ends with "-EL2" are not included. | FCB-EL2 Straight Cable | PSB4-30024-PEI | 550 g |
| LDL2-506X30SW2(-WD)* ¹ | White | | | 7,800 K | | | | | | | | | |
| LDL2-506X30BL2(-WD)* ¹ | Blue | | | 467 nm | | | | | | | | | |

Emitting width: 30 mm

Extension Cables ▶ P.308

Control Unit Selection Guide ▶ P.251

List of Control Unit Specifications ▶ P.253

*1 These Light Units have an EL connector (ELP-02V, 1: +Brown, 2: -Blue). Use the Control Unit that has EL connectors.

▶ **LED Properties**

| | Conventional products | High-power type |
|--|-----------------------|-----------------|
| Spectral distribution | | |
| Offers you the most suitable lens filter for each wavelength. For details about the lens filter, refer to P.299. | | |
| Directional characteristics (Typical examples) | | |

Be sure to read the "Instruction Guide" included with the product before use and observe cautionary information. The data included is for reference only. Actual values may vary.

You can inquire using our website.

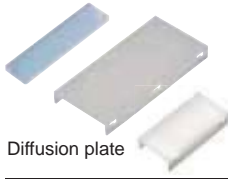
- Sample Testing
- Light Unit Selection
- Free Product Trial
- Custom Orders
- Product Details
- Pricing/Quotation
- Discontinued Products

- Direct Lighting
 - LDR2
 - LDR2-LA
 - LDR-LA1
 - SQR
 - SQR-TP
- Diffused Lighting
 - HPR2
 - LFR
 - LKR
 - FPR
 - FPO2
- Direct Lighting
 - LDL2
 - LDLB
 - HLDL2
 - HL
 - TH2 (5 types)
 - TH
 - LFL
 - HPD2
 - LDM2
 - LAV
 - PDM
 - LFX3
 - LFX3-PT
 - LFV3
- Diffused Lighting
 - MSU
 - MFU
- Spot Lighting, Etc.
 - PF
 - HLDR-IP/
 - HSL-PCL
 - UV2
 - UV
 - LNSP-UV-FN
 - IR2
 - IU
 - HLV3
 - HLV2
 - LV
 - LSP
 - HFS/HFR
 - HLV3-NR
 - HLV3-3M-RGB-4
 - HLV2-NR
 - HLV2-3M-RGB-3W
 - PFBR
 - PFB3
 - PFB2
- Convergent Lighting
 - LNLP
 - LNSP2
 - LNSP
 - Coaxial Units
 - LNSP-FN
 - LN/LN-HK
- Diffused Lighting
 - LNSD
 - LND2
 - HLND
 - LT
 - LVN
 - LNDG
 - LNIS2
 - LNIS
 - LNIS-FN
- Oblique/Angled Lighting
 - Telecentric Lens
 - Macro Lens

LDL2 Series

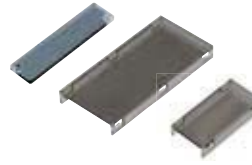


Options



Can prevent glare, which is a problem when making images of glossy workpieces.

Diffusion plate



Use with a polarizing filter to remove the light's surface reflection.

Polarizing plate

| Model name | Applicable Light Unit (Conventional product/High-power type) (Common for all colors) |
|----------------|--|
| DF-LDL2-19X4 | LDL2-19X4 |
| DF-LDL2-33X8 | LDL2-33X8 |
| DF-LDL2-41X16 | LDL2-41X16 (-WD) |
| DF-LDL2-80X16 | LDL2-80X16 (-WD) |
| DF-LDL2-119X16 | LDL2-119X16 (-WD) |
| DF-LDL2-158X16 | LDL2-158X16 (-WD) |
| DF-LDL2-26X30 | LDL2-26X30 (-WD) |
| DF-LDL2-50X30 | LDL2-50X30 (-WD) |
| DF-LDL2-74X30 | LDL2-74X30 (-WD) |
| DF-LDL2-98X30 | LDL2-98X30 (-WD) |
| DF-LDL2-122X30 | LDL2-122X30 (-WD) |
| DF-LDL2-146X30 | LDL2-146X30 (-WD) |
| DF-LDL2-218X30 | LDL2-218X30 (-WD) |
| DF-LDL2-266X30 | LDL2-266X30 (-WD) |

| Model name | Applicable Light Unit (Conventional product/High-power type) (Common for all colors) |
|-------------------|--|
| PL-LDL2-19X4-HO | LDL2-19X4 |
| PL-LDL2-19X4-VE | |
| PL-LDL2-33X8-HO | LDL2-33X8 |
| PL-LDL2-33X8-VE | |
| PL-LDL2-41X16 | LDL2-41X16 (-WD) |
| PL-LDL2-41X16-VE | |
| PL-LDL2-80X16 | LDL2-80X16 (-WD) |
| PL-LDL2-80X16-VE | |
| PL-LDL2-119X16 | LDL2-119X16 (-WD) |
| PL-LDL2-119X16-VE | |
| PL-LDL2-158X16 | LDL2-158X16 (-WD) |
| PL-LDL2-158X16-VE | |

| Model name | Applicable Light Unit (Conventional product/High-power type) (Common for all colors) |
|-------------------|--|
| PL-LDL2-26X30 | LDL2-26X30 (-WD) |
| PL-LDL2-26X30-VE | |
| PL-LDL2-50X30 | LDL2-50X30 (-WD) |
| PL-LDL2-50X30-VE | |
| PL-LDL2-74X30 | LDL2-74X30 (-WD) |
| PL-LDL2-74X30-VE | |
| PL-LDL2-98X30 | LDL2-98X30 (-WD) |
| PL-LDL2-98X30-VE | |
| PL-LDL2-122X30 | LDL2-122X30 (-WD) |
| PL-LDL2-122X30-VE | |
| PL-LDL2-146X30 | LDL2-146X30 (-WD) |
| PL-LDL2-146X30-VE | |
| PL-LDL2-218X30 | LDL2-218X30 (-WD) |
| PL-LDL2-218X30-VE | |
| PL-LDL2-266X30 | LDL2-266X30 (-WD) |
| PL-LDL2-266X30-VE | |

▶ P.302

▶ P.303
There are two kinds of polarizing plates: the HO and the VE. For details, refer to P. 303.



Protects the emitting part of the Light Unit.

Not intended to protect against dust or water.

Protective plate



Bracket

You can freely adjust the illuminating angle when affixing the Bar Light. Various kinds of illumination are possible depending on the affixing method, such as illumination from two or four directions.



Bracket

You can freely adjust the illuminating angle when affixing the Bar Light. Various kinds of illumination are possible depending on the affixing method, such as illumination from two or four directions.

| Model name | Applicable Light Unit (Conventional product/High-power type) (Common for all colors) |
|----------------|--|
| CV-LDL2-41X16 | LDL2-41X16 (-WD) |
| CV-LDL2-80X16 | LDL2-80X16 (-WD) |
| CV-LDL2-119X16 | LDL2-119X16 (-WD) |
| CV-LDL2-158X16 | LDL2-158X16 (-WD) |
| CV-LDL2-26X30 | LDL2-26X30 (-WD) |
| CV-LDL2-50X30 | LDL2-50X30 (-WD) |
| CV-LDL2-74X30 | LDL2-74X30 (-WD) |
| CV-LDL2-98X30 | LDL2-98X30 (-WD) |
| CV-LDL2-122X30 | LDL2-122X30 (-WD) |
| CV-LDL2-146X30 | LDL2-146X30 (-WD) |
| CV-LDL2-218X30 | LDL2-218X30 (-WD) |
| CV-LDL2-266X30 | LDL2-266X30 (-WD) |

| Model name | Note (Conventional product/High-power type) |
|------------|--|
| BK-LDL2 | Angle adjustment bracket common for the LDL2 series (x2) |

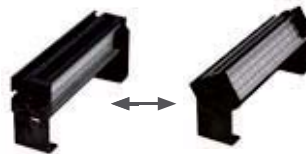
Not applicable for the LDL2-19X4 and LDL2-33X8 series.

▶ P.305

| Model name | Note (Conventional product/High-power type) |
|--------------|--|
| BK-LDQ2-33X8 | Bracket that can install four of the Bar Lights. |

▶ P.305

Usage example of the BK-LDL2



Adjustable illuminating angle between 0 to 90°

We accept custom orders for the brackets that are applicable for the following products. Contact your sales representative for details.

| Applicable Light Unit (High-power type) | BK-LDQ2 |
|--|---|
| LDL2-19X4 | Bracket that can install four Bar Lights. (Custom orders) |
| LDL2-26X30 | |
| LDL2-50X30 | |

Not applicable for the LDL2-19X4 and LDL2-33X8 series.

▶ P.307



Bracket

You can freely adjust the illuminating angle when affixing the Bar Light. Various kinds of illumination are possible depending on the affixing method, such as illumination from two or four directions.

| Model name | Note (Conventional product/High-power type) |
|----------------|--|
| BK-LDQ2-41X16 | Bracket that can install four of the Bar Lights. |
| BK-LDQ2-80X16 | |
| BK-LDQ2-119X16 | |
| BK-LDQ2-158X16 | |
| BK-LDQ2-74X30 | |
| BK-LDQ2-98X30 | |
| BK-LDQ2-122X30 | |
| BK-LDQ2-146X30 | |
| BK-LDQ2-218X30 | |
| BK-LDQ2-266X30 | |

▶ P.305

Optional accessories for the high-power type Light Units

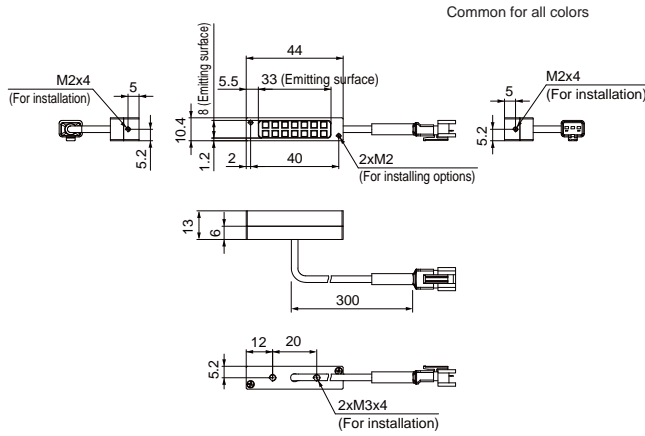
Optional accessories are applicable to the high-power type products as well as to the conventional products of the same size.

For details on the optional accessories that are applicable to the Light Units of the newly added size, refer to the tables under "Options."

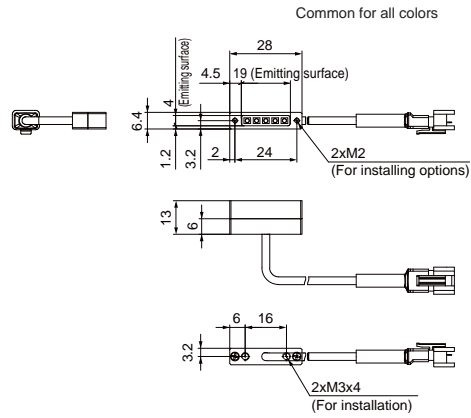
| | |
|------------------|-------------------------|
| LDR2 | Direct Lighting |
| LDR2-LA | |
| LDR-LA1 | |
| SQR | |
| SQR-TP | |
| HPR2 | Diffused Lighting |
| LFR | |
| LKR | |
| FPR | |
| FPO2 | |
| LDL2 | Direct Lighting |
| LDLB | |
| HLDL2 | |
| HL | |
| TH2 (5 types) | |
| TH | Diffused Lighting |
| LFL | |
| HPD2 | |
| LDM2 | |
| LAV | |
| PDM | Strobe/Colored Lighting |
| LFX3 | |
| LFX3-PT | |
| LFV3 | |
| MSU | |
| MFU | Waterproof Lighting |
| PF | |
| HLDR-IP/HSL-PCL | |
| UV2 | |
| UV | |
| LNSP-UV-FN | Ultraviolet Lighting |
| IR2 | |
| IU | |
| HLV3 | |
| HLV2 | |
| LV | Spot Lighting, Etc. |
| LSP | |
| HFS/HFR | |
| HLV3-NR | |
| HLV3-3M-RGB-4 | |
| HLV2-NR | Convergent Lighting |
| HLV2-3M-RGB-3W | |
| PFB3 | |
| PFB2 | |
| LNSP | |
| LNSP2 | Diffused Lighting |
| LNSP | |
| LNSD | |
| LND2 | |
| HLND | |
| LT | Oblique Anched Lighting |
| LNV | |
| LNDG | |
| LNIS2 | |
| LNIS | |
| LNIS-FN | Lenses |
| Telecentric Lens | |
| Macro Lens | |

Dimensions (mm)

LDL2-33X8 Standard products (Conventional products/High-power type)

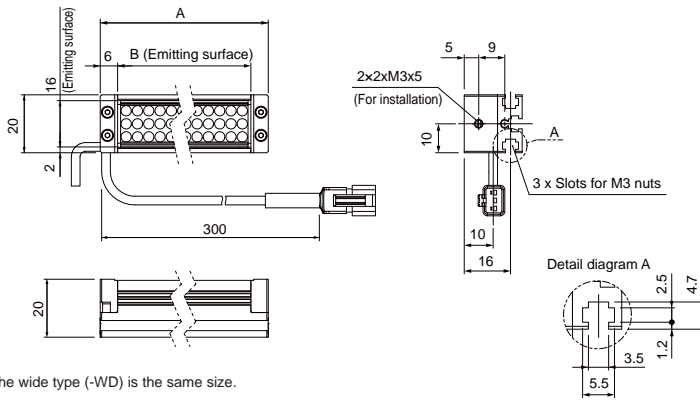


LDL2-19X4 Standard products (High-power type)



LDL2-nnnX16 Standard products (Conventional products/High-power type) Special orders (Conventional products/High-power type)

nnn=B (Emitting surface) Common for all colors



The wide type (-WD) is the same size.

Standard products
(Conventional products/High-power type)

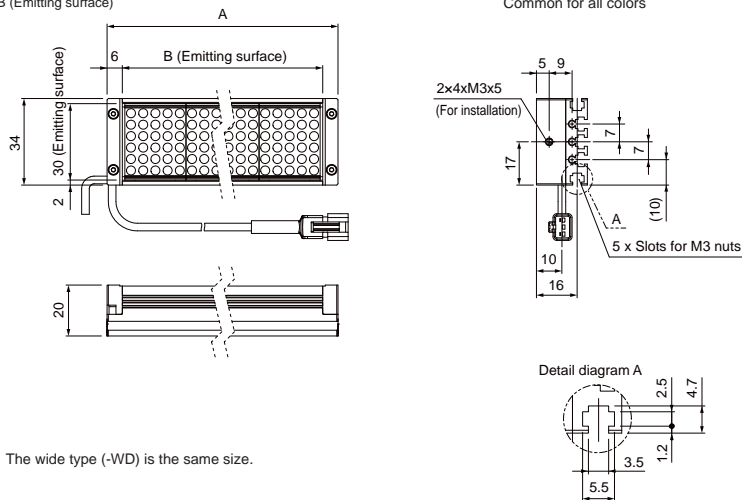
| Applicable Light Unit | A | B |
|-----------------------|-----|-----|
| LDL2-41X16 (-WD) | 53 | 41 |
| LDL2-80X16 (-WD) | 92 | 80 |
| LDL2-119X16 (-WD) | 131 | 119 |
| LDL2-158X16 (-WD) | 170 | 158 |

Special orders
(Conventional products/High-power type)

| Applicable Light Unit | A | B |
|-----------------------|-----|-----|
| LDL2-197X16 (-WD) | 209 | 197 |
| LDL2-236X16 (-WD) | 248 | 236 |
| LDL2-275X16 (-WD) | 287 | 275 |
| LDL2-314X16 (-WD) | 326 | 314 |
| LDL2-353X16 (-WD) | 365 | 353 |
| LDL2-392X16 (-WD) | 404 | 392 |
| LDL2-431X16 (-WD) | 443 | 431 |
| LDL2-470X16 (-WD) | 482 | 470 |
| LDL2-509X16 (-WD) | 521 | 509 |

LDL2-nnnX30 Standard products (Conventional products/High-power type) Special orders (Conventional products/High-power type)

nnn=B (Emitting surface) Common for all colors



The wide type (-WD) is the same size.

Standard products
(Conventional products/High-power type)

| Applicable Light Unit | A | B |
|-----------------------|-----|-----|
| LDL2-26X30 (-WD) | 38 | 26 |
| LDL2-50X30 (-WD) | 62 | 50 |
| LDL2-74X30 (-WD) | 86 | 74 |
| LDL2-98X30 (-WD) | 110 | 98 |
| LDL2-122X30 (-WD) | 134 | 122 |
| LDL2-146X30 (-WD) | 158 | 146 |
| LDL2-218X30 (-WD) | 230 | 218 |
| LDL2-266X30 (-WD) | 278 | 266 |

Special orders
(Conventional products/High-power type)

| Applicable Light Unit | A | B |
|-----------------------|-----|-----|
| LDL2-170X30 (-WD) | 182 | 170 |
| LDL2-194X30 (-WD) | 206 | 194 |
| LDL2-242X30 (-WD) | 254 | 242 |
| LDL2-290X30 (-WD) | 302 | 290 |
| LDL2-314X30 (-WD) | 326 | 314 |
| LDL2-338X30 (-WD) | 350 | 338 |
| LDL2-362X30 (-WD) | 374 | 362 |
| LDL2-386X30 (-WD)*1 | 398 | 386 |
| LDL2-410X30 (-WD)*1 | 422 | 410 |
| LDL2-434X30 (-WD)*1 | 446 | 434 |
| LDL2-458X30 (-WD)*1 | 470 | 458 |
| LDL2-482X30 (-WD)*1 | 494 | 482 |
| LDL2-506X30 (-WD)*1 | 518 | 506 |

*1 For the conventional products: SM connector (SMR-03V-B, 1: +Brown, 2: NC, 3: -Blue)
For the high-power type: EL connector (ELP-02V, 1: +Brown, 2: -Blue).
Use the Control Unit which has EL connectors.

You can change the connectors of the Light Unit cable. Choose between M12 connectors and flying leads. Refer to P.5 for details.

| | |
|----------------------------|---|
| Direct Lighting | LDR2 LDR2-LA LDR-LA1 SQR SQR-TP |
| Diffused Lighting | HPR2 LFR LKR FPR FPQ2 |
| Direct Lighting | LDL2 LDLB HLDL2 HL |
| Diffused Lighting | TH2 (5 types) LFL HPD2 LDM2 LAV PDM LFX3 LFX3-PT LFV3 |
| Compared Lighting | MSU MFU |
| Strobe Lighting | PF |
| Water-proof Lighting | HLDR-IP/ HSL-PCL |
| Ultraviolet Lighting | UV2 UV LNSP-UV-FN |
| Infrared Lighting | IR2 |
| Intensity Control Lighting | IU |
| Spot Lighting, Etc. | HLV3 HLV2 LV LSP HFS/HFR HLV3-NR HLV3-3M-RGB-4 HLV2-NR HLV2-3M-RGB-3W PFBR PFB3 PFB2 |
| Convergent Lighting | LNLP LNSP2 LNSP Coaxial Units LNSP-FN LN/LN-HK |
| Diffused Lighting | LNSD LND2 HLND LT LNV |
| Oblique/Angled Lighting | LNDG LNS2 LNIS LNIS-FN |
| Lenses | Telecentric Lens Macro Lens |