

# CHGM-2600M

25 MP 1.1" CMOS GigE Area Scan Camera



GEN*i*CAM

GigE  
VISION

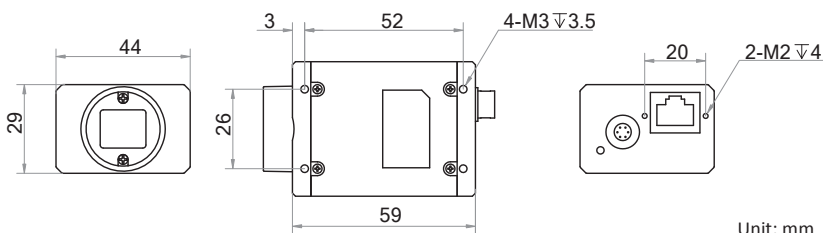
## Introduction

CHGM-2600M camera adopts Gpixel GMAX0505 sensor to provide high-quality image. It uses GigE interface to transmit non-compressed images in real time with max. frame rate reaching 4.5 fps.

## Key Feature

- Supports manual adjustment for gain, exposure control, LUT, Gamma correction, etc.
- Resolution of 5120 × 5120 and pixel size of 2.5 μm × 2.5 μm
- Adopts GigE interface providing max. transmission distance of 100 meters without relay
- Supports hardware triggering, software triggering and free run mode
- Up to 128 MB local memory for burst transmission and retransmission

## Dimension



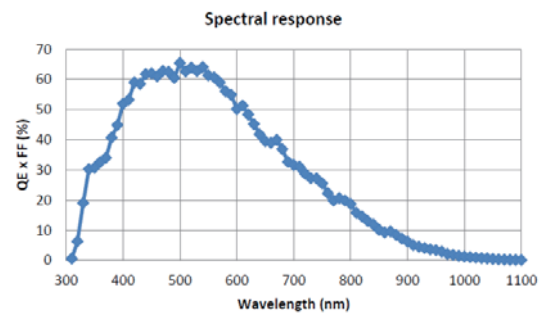
## Available Model

Mono camera: CHGM-2600M

## Applicable Industry

SMT/ PCB AOI, FPD, railway related applications, etc.

## Sensor Quantum Efficiency



## Specification

<b>Model</b>	<b>CHGM-2600M</b>
<b>Camera</b>	
<b>Sensor type</b>	CMOS, global shutter
<b>Sensor model</b>	Gpixel GMAX0505
<b>Pixel size</b>	2.5 $\mu\text{m}$ $\times$ 2.5 $\mu\text{m}$
<b>Sensor size</b>	1.1"
<b>Resolution</b>	5120 $\times$ 5120
<b>Max. frame rate</b>	4.5 fps @5120 $\times$ 5120
<b>Dynamic range</b>	63 dB
<b>SNR</b>	36 dB
<b>Gain</b>	7.9 dB to 13.9 dB
<b>Exposure time</b>	12 $\mu\text{s}$ to 10 s
<b>Mono/color</b>	Mono
<b>Shutter mode</b>	Off/Once/Continuous exposure mode
<b>Pixel format</b>	Mono 8/10/10p/12/12p
<b>Binning</b>	Supports 2 $\times$ 2, 4 $\times$ 4
<b>Decimation</b>	Supports 2 $\times$ 2, 4 $\times$ 4
<b>Reverse image</b>	Supports horizontal and vertical reverse image output
<b>Image buffer</b>	128 MB
<b>Electrical features</b>	
<b>Data interface</b>	Gigabit Ethernet
<b>Digital I/O</b>	6-pin Hirose connector provides power and I/O, including opto-isolated input x 1 (Line0), opto-isolated output x 1 (Line1), and bi-directional non-isolated I/O x 1 (Line2)
<b>Power supply</b>	5 VDC to 15 VDC, supports PoE power supply
<b>Power consumption</b>	< 3.6 W@12 VDC
<b>Structure</b>	
<b>Lens mount</b>	C-mount
<b>Dimension</b>	29 mm $\times$ 44 mm $\times$ 59 mm (1.1" $\times$ 1.7" $\times$ 2.3")
<b>Weight</b>	< 100 g (0.2 lb.)
<b>Ingress protection</b>	IP30 (under proper lens installation and wiring)
<b>Temperature</b>	Working temperature: 0 $^{\circ}\text{C}$ to 50 $^{\circ}\text{C}$ (32 $^{\circ}\text{F}$ to 122 $^{\circ}\text{F}$ ) Storage temperature: -30 $^{\circ}\text{C}$ to 70 $^{\circ}\text{C}$ (-22 $^{\circ}\text{F}$ to 158 $^{\circ}\text{F}$ )
<b>Humidity</b>	20% to 80% RH, without condensation
<b>General</b>	
<b>Client software</b>	MVS or third-party software meeting with GigE Vision Protocol
<b>Operating system</b>	32/64-bit Windows XP/7/10, 32/64-bit Linux and 64-bit MacOS
<b>Compatibility</b>	GigE Vision V2.0, GenICam
<b>Certification</b>	CE, FCC, RoHS, KC