

CHTGM-2500M

25 MP CMOS 10 GigE Area Scan Camera



GEN<i>i>CAM

10GigE
VISION

Introduction

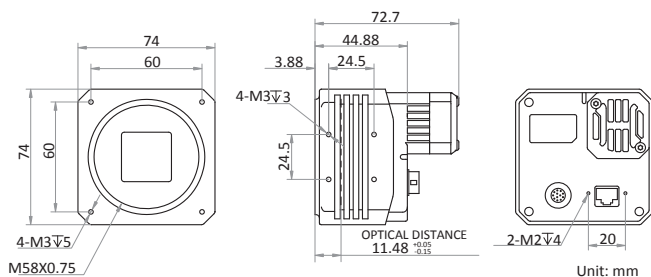
CHTGM-2500M camera adopts OnSemi PYTHON25K sensor and M58-mount with fan, Mono: provides high-quality image. It uses 10 GigE interface to transmit non-compressed images in real time with max. frame rate reaching 40 fps under full resolution.

Key Feature

- Resolution of 5120×5120 and pixel size of $4.5 \mu\text{m} \times 4.5 \mu\text{m}$
- Supports auto and manual adjustment for exposure control, Gamma correction, sharpness, etc.
- Adopts 10 GigE interface and compatible with Gigabit Ethernet
- Compact design with mounting holes on the up and bottom panels for flexible mounting

Dimension

M58-mount with fan:



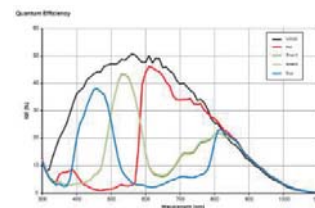
Available Model

CHTGM-2500M-M58
F-mount with fan, Mono:
CHTGM-2500M-F

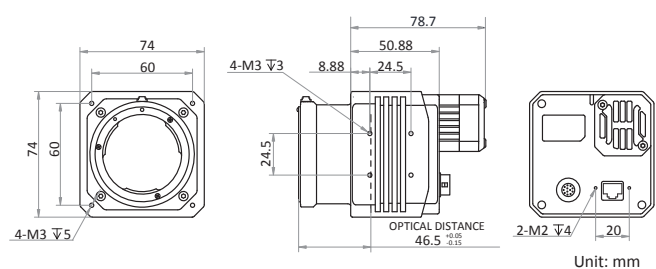
Applicable Industry

SMT/ PCB AOI, FPD, railway related applications, etc.

Sensor Quantum Efficiency



F-mount with fan:



Specification

Model	CHTGM-2500M
Camera	
Sensor type	CMOS, global shutter
Sensor model	OnSemi PYTHON25K
Pixel size	4.5 μm \times 4.5 μm
Sensor size	23 mm x 23 mm
Resolution	5120 \times 5120
Max. frame rate	40 fps @5120 \times 5120
Dynamic range	58 dB
SNR	40 dB
Gain	0 dB to 15 dB
Exposure time	45 μs to 10 s
Shutter mode	Off/Once/Continuous exposure mode
Mono/color	Mono
Pixel format	Mono 8/10/10p/12/12p
Binning	Supports 1 x 2, 2 x 1, 2 x 2
Decimation	Supports 2 x 2
Reverse image	Supports horizontal and vertical reverse image output
Image buffer	1024 MB
Electrical features	
Data interface	10 Gigabit Ethernet, compatible with Gigabit Ethernet
Digital I/O	12-pin Hirose connector provides power and I/O, including opto-isolated input x 1 (Line0), opto-isolated output x 1 (Line1), bi-directional non-isolated I/O x 1 (Line2), and RS-232 x 1
Power supply	12 VDC to 24 VDC
Power consumption	Approx. 14 W@12 VDC
Structure	
Lens mount	M58-mount, optical back focal length 11.48 mm (0.45") F-mount, optical back focal length 46.5 mm (1.8")
Dimension	M58-mount with fan: 74 mm \times 74 mm \times 72.7 mm (2.9" \times 2.9" \times 2.86") F-mount with fan: 74 mm \times 74 mm \times 78.7 mm (2.9" \times 2.9" \times 3.1")
Weight	M58-mount with fan: < 450 g (1.0 lb.), F-mount with fan: < 600 g (1.3 lb.)
Ingress protection	IP40 (under proper lens installation and wiring)
Temperature	Working temperature: 0 $^{\circ}\text{C}$ to 50 $^{\circ}\text{C}$ (32 $^{\circ}\text{F}$ to 122 $^{\circ}\text{F}$) Storage temperature: -30 $^{\circ}\text{C}$ to 70 $^{\circ}\text{C}$ (-22 $^{\circ}\text{F}$ to 158 $^{\circ}\text{F}$)
Humidity	20% to 95% RH, without condensation
General	
Client software	MVS or third-party software meeting with GigE Vision Protocol
Operating system	Windows XP/7/10 32/64-bit
Compatibility	GigE Vision V2.0, GenICam
Certification	CE, FCC, RoHS, KC