

CHGM-2000M-6

20 MP 1" CMOS GigE Area Scan Camera



GEN*i*CAM

GigE
VISION

Introduction

CHGM-2000M-6 camera adopts Sony IMX183 sensor to provide high-quality image. It uses GigE interface to transmit non-compressed images in real time with max. frame rate reaching 6 fps.

Key Feature

- Adopts GigE interface and max. transmission distance of 100 meters without relay
- Up to 128 MB local memory for burst transmission and retransmission
- Supports auto exposure control, LUT, Gamma correction, etc.
- Supports hardware trigger, software trigger, etc.
- Compatible with GigE Vision V2.0 Protocol, GenICam Standard, and third-party software based on the protocol and standard

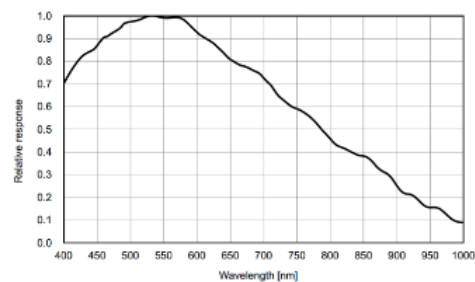
Available Model

Mono camera: CHGM-2000M-6

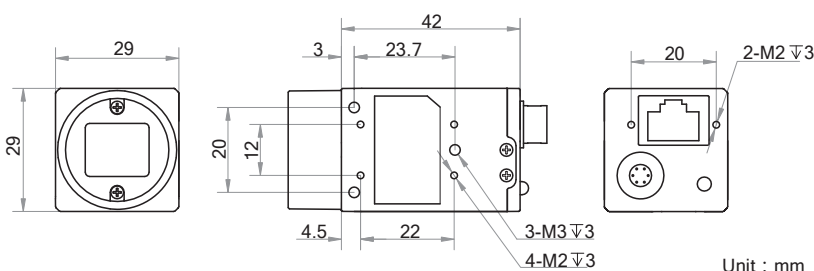
Applicable Industry

Electronic semiconductor, factory automation, logistics code reading, medical packing, quality inspection, etc.

Sensor Quantum Efficiency



Dimension



Specification

Model	CHGM-2000M-6
Camera	
Sensor type	CMOS, rolling shutter
Sensor model	Sony IMX183
Pixel size	2.4 μm \times 2.4 μm
Sensor size	1"
Resolution	5472 \times 3648
Max. frame rate	6 fps @5472 \times 3648
Dynamic range	65.5 dB
SNR	41.5 dB
Gain	0 dB to 20 dB
Exposure time	46 μs to 2.5 s
Shutter mode	Off/Once/Continuous exposure mode, supports Global Reset
Mono/color	Mono
Pixel format	Mono 8/10/10p/12/12p
Acquisition mode	Continuous mode and SingleFrame mode
Binning	Supports 1 \times 1, 1 \times 2, 1 \times 4, 2 \times 1, 2 \times 2, 2 \times 4, 4 \times 1, 4 \times 2, 4 \times 4
Decimation	Not support
Reverse image	Supports horizontal and vertical reverse image output
Image buffer	128 MB
Electrical features	
Data interface	Gigabit Ethernet
Digital I/O	6-pin Hirose connector provides power and I/O, including Opto-isolated input x 1 (Line0), opto-isolated output x 1 (Line1), bi-directional non-isolated I/O x 1 (Line2)
Power supply	9 VDC to 26 VDC, supports PoE power supply
Power consumption	Approx. 2.9 W@12 VDC
Structure	
Lens mount	C-Mount
Dimension	29 mm \times 29 mm \times 42 mm (1.1" \times 1.1" \times 1.7")
Weight	Approx. 95 g (0.2 lb.)
Ingress protection	IP30 (under proper lens installation and wiring)
Temperature	Working temperature: 0 $^{\circ}\text{C}$ to 50 $^{\circ}\text{C}$ (32 $^{\circ}\text{F}$ to 122 $^{\circ}\text{F}$) Storage temperature: -30 $^{\circ}\text{C}$ to 70 $^{\circ}\text{C}$ (-22 $^{\circ}\text{F}$ to 158 $^{\circ}\text{F}$)
Humidity	20% to 80% RH, without condensation
General	
Client software	MVS or third-party software meeting with GigE Vision Protocol
Operating system	32/64-bit Windows XP/7/10, 32/64-bit Linux and 64-bit MacOS
Compatibility	GigE Vision V2.0, GenICam
Certification	CE, FCC, RoHS, KC