

CHGM-160M/C

1.6 MP 1/2.9" CMOS GigE Area Scan Camera

GEN*i*CAM

GigE
VISION



Introduction

CHGM-160M/C camera adopts Sony IMX 273 sensor and provides high quality image. The GigE interface provides high-speed and real-time transmission of uncompressed data with the maximum frame rate reaching 78.2 fps at full resolution.

Key Feature

- Adopts GigE interface and max. transmission distance of 100 meters without relay
- Supports auto and manual adjustment for exposure control, LUT, Gamma correction, etc.
- Up to 128 MB local memory for burst transmission and retransmission
- Supports hardware trigger, software trigger, etc.
- Compatible with GigE Vision Protocol V2.0, GenICam Standard, and third-party software based on these protocol and standard

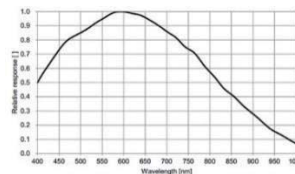
Available Model

Mono camera: CHGM-160M
Color camera: CHGM-160C

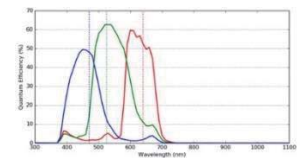
Applicable Industry

Electronic semiconductor, factory automation, and quality inspection, etc.

Sensor Quantum Efficiency

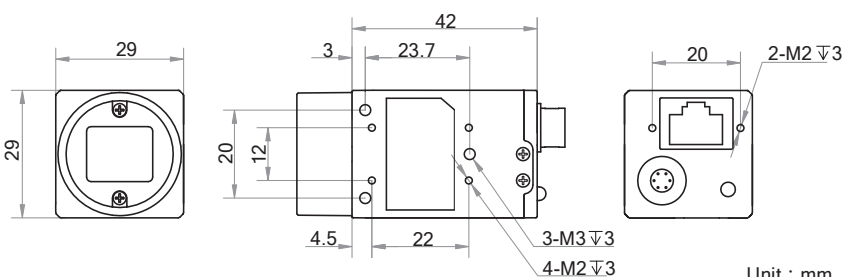


CHGM-160M



CHGM-160C

Dimension



HOURS
www.hours-web.com

Specification

Model	CHGM-160M	CHGM-160C
Camera		
Sensor type	CMOS, global shutter	
Sensor model	Sony IMX273	
Pixel size	3.45 μm \times 3.45 μm	
Sensor size	1/2.9"	
Resolution	1440 \times 1080	
Max. frame rate	78.2 fps @1440 \times 1080	
Dynamic range	71.4 dB	
SNR	41 dB	
Gain	0 dB to 20 dB	
Exposure time	1 μs to 10 s	
Shutter mode	Off/ Once /Continuous exposure mode	
Mono/color	Mono	Color
Pixel format	Mono 8/10/10p/12/12p	Mono8/10/12, Bayer RG 8/10/10p/12/12p YUV 422 Packed, YUV422_YUYV_Packed, RGB8
Binning	Supports 1 \times 1, 2 \times 2	
Decimation	Supports 1 \times 1, 2 \times 2	
Reverse image	Supports horizontal and vertical reverse image output	
Image buffer	128 MB	
Electrical features		
Data interface	Gigabit Ethernet (1000 Mbit/s), Fast Ethernet (100 Mbit/s)	
Digital I/O	6-pin Hirose connector provides power supply and I/O, including opto-isolated input x 1, opto-isolated output x 1, and bi-directional non-isolated I/O x 1	
Power supply	9 VDC to 26 VDC, supports PoE power supply	
Power consumption	3 W@12 VDC	
Structure		
Lens mount	C-Mount	
Dimension	29 mm \times 29 mm \times 42 mm (1.1" \times 1.1" \times 1.7")	
Weight	Approx. 68 g (0.15 lb)	
Ingress protection	IP 30 (under proper lens installation and wiring)	
Temperature	Working temperature: 0 $^{\circ}\text{C}$ to 50 $^{\circ}\text{C}$ (32 $^{\circ}\text{F}$ to 122 $^{\circ}\text{F}$) Storage temperature: -30 $^{\circ}\text{C}$ to 70 $^{\circ}\text{C}$ (-22 $^{\circ}\text{F}$ to 158 $^{\circ}\text{F}$)	
Humidity	20% to 80% RH, without condensation	
General		
Client software	MVS or third-party software meeting with GigE Vision Protocol	
Operating system	32/64-bit Windows XP/7/10, 32/64-bit Linux and 64-bit MacOS	
Compatibility	GigE Vision V2.0, GenICam	
Certification	CE, FCC, RoHS	