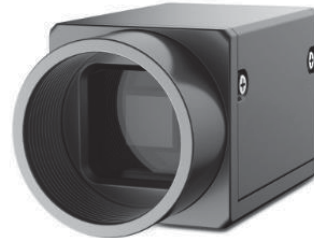


## CHUM-131M/C 1.3MP, 1/2" CMOS, USB 3.0 Camera

**USB<sup>3</sup>**  
VISION



CHUM-131M/C 1.3 MP 1/2" CMOS USB 3.0 Camera is a high quality device that can be used in a variety of applications, including electronic semiconductor fabrication, factory automation, logistics code reading, bottle inspection and medical packaging.

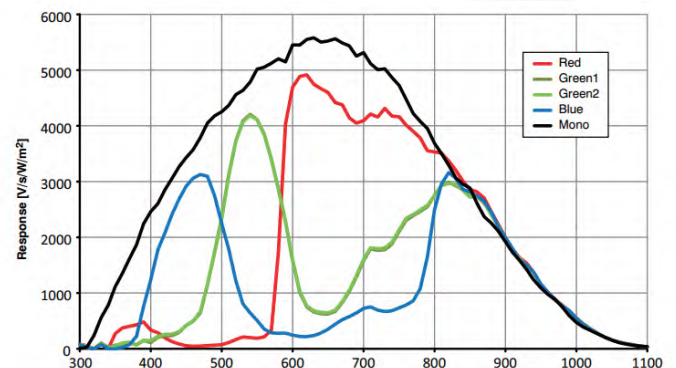
### Key Features

- Supports auto exposure control, user defined LUT and gamma correction.
- Cameras can be synchronized with hard trigger and soft trigger. Different exposure modes supported.
- Compact structure with the size of 29mm×29mm×30mm, suitable for tight mounting requirement.
- The USB3.0 interface is tightly locked to prevent accidental unplugging and dropping.
- Compatible with USB 3.0 Vision V1.0.

### Application Scenarios

- Electronic semiconductor
- Factory automation
- Logistics code reading
- Bottle inspection
- Medical packaging

### Spectral Response



CHUM-131M/C Quantum Efficiency

### Order Models

Mono: CHUM-131M

Color: CHUM-131C

## Specifications

Model	CHUM-131M		CHUM-131C	
	Parameters			
		1.3MP, 1/2" CMOS, USB 3.0 Camera		
Camera				
Sensor		PYTHON 1300		
Pixel Size		4.8μm×4.8μm		
Sensor Size		1/2"		
Resolution		1280×1024		
Frame Rate		170fps	90fps	
Dynamic Range		>60dB		
SNR		>40dB		
Gain Range		0-15dB		
Exposure Time		40μs-10sec	65μs-10sec	
Shutter Mode		Global shutter. Auto-exposure, Manual exposure, and One-key exposure		
Data Interface		USB 3.0		
General Purpose I/O		Opto-isolated input x1, Opto-isolated output x1, Bi-directional non-isolated I/O x1		
Data Format		Mono 8/10/10p/12/12p	Mono 8/10/12, Bayer RG 8/10/10p/12/12p, YUV422_YUYV_Packed, YUV422_Packed, RGB8	
General				
Power		<3W@12VDC, Voltage 5~15VDC, USB 3.0 power supply supported		
Temperature		Working Temperature 0~50℃, Storage Temperature -30~70℃		
Humidity		20%-80% RH without condensation		
Dimension		29mm×29mm×30mm		
Weight		<56g		
Lens Interface		C-Mount		
Software		MVS or Third-Party Software supporting USB 3.0 Vision Protocol		
Operating System		Windows XP/7/10 32/64bits		
Compliance		USB 3.0 Vision		
Certification		CE, FCC, RoHS		

## Recommended Accessories

- **Power:** 12VDC @1A power adapter
- **Cable:** Micro USB 3.0 cable (B Type) recommended

## Dimensions

