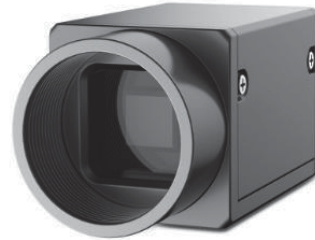


CHUM-600M/C 6MP, 1/1.8" CMOS, USB 3.0 Camera

USB³
VISION



CHUM-600M/C 6 MP 1/1.8" CMOS USB 3.0 Camera is a high quality device that can be used in a variety of applications, including electronic semiconductor fabrication, factory automation, medical packaging.

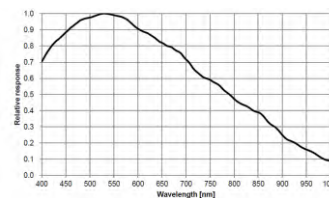
Key Features

- Supports auto exposure control, LUT and gamma correction.
- Cameras can be synchronized with hard trigger and soft trigger.
- Compact structure, 29mm×29mm×30mm, suitable for smaller installation requirements.
- The USB3.0 interface is tightly locked to prevent accidental unplugging and dropping.
- Compatible with USB 3.0 Vision V1.0, can be supported by third party software.

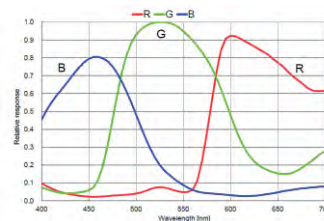
Application Scenarios

- Electronic semiconductor
- Factory automation
- Medical packaging

Spectral Response



CHUM-600M Quantum Efficiency



CHUM-600C Quantum Efficiency

Order Models

Mono: CHUM-600M

Color: CHUM-600C

Specifications

Model	CHUM-600M	CHUM-600C
Parameters	6MP, 1/1.8" CMOS, USB 3.0 Camera	
Camera		
Sensor	IMX178	
Pixel Size	2.4μm×2.4μm	
Sensor Size	1/1.8"	
Resolution	3072x2048	
Frame Rate	42.7fps	
Dynamic Range	>65dB	
SNR	>40dB	
Gain Range	0-20dB	
Exposure Time	24μs-1sec	
Shutter Mode	Rolling shutter, with GlobalReset supported. Auto-exposure, Manual exposure, and One-key exposure	
Data Interface	USB 3.0	
General Purpose I/O	Opto-isolated input x1, Opto-isolated output x1, Bi-directional non-isolated I/O x1	
Buffer	128MB	
Data Format	Mono 8/10/10p/12/12p	Mono 8/10/12, Bayer RG 8/10/10p/12/12p, YUV 422 Packed, YUV 422_YUYV_Packed, RGB8
General		
Power	<2.7W@12VDC, Voltage 5~15VDC, USB 3.0 power supply supported	
Temperature	Working Temperature 0~50°C, Storage Temperature -30~70°C	
Humidity	20%-80% RH without condensation	
Dimension	29mm×29mm×30mm	
Weight	<56g	
Lens Interface	C-Mount	
Software	MVS or Third-Party Software supporting USB 3.0 Vision Protocol	
Operating System	Windows XP/7/10 32/64bits	
Compliance	USB 3.0 Vision	
Certification	CE, FCC, RoHS	

Recommended Accessories

- **Power:** 12VDC @1A power switch or adapter
- **Cable:** Micro USB 3.0 cable (B Type) recommended

Dimensions

