



FIREWIRE IEEE-1394 CABLES

PART NUMBER: ITC- **F** ■ **X** ■ **X** ■ **X** ■ **()** **M**

Select Connector Type: End "1"

1394b 9 Pin w/Thumbscrews = 1	1394b R/A UP w/Recessed Screws = 11
1394b 9 Pin Friction Fit = 2	1394b R/A DOWN w/Recessed Screws = 12
1394a 6 Pin w/Thumbscrews = 3	1394b 9 Pin Exit RIGHT w/Screw = 13
1394a 6 Pin Friction Fit = 4	1394b 9 Pin Exit LEFT w/Screw = 14
1394a 6 Pin w/Latches = 5	1394a 6 Pin R/A (Cable Exit Pin 1) = 15
1394b 9 Pin R/A UP = 6	1394a 6 Pin R/A (Cable Exit Pin 6) = 16
1394b 9 Pin R/A DOWN = 7	1394a 6 Pin Female = 17
1394b 9 Pin Exit RIGHT = 8	1394a 6 Pin R/A (Cable Exit Pin 1) = 18
1394b 9 Pin Exit LEFT = 9	1394a 6 Pin R/A (Cable Exit Pin 6) = 19
1394b 9 Pin Female = 10	

Cable Type Options:

Standard Static Cable = 1
HIFLEX = 2
Extended Distance = 3
ROBOTIC = 4 *

Select Connector Type: End "2"

1394b 9 Pin w/Thumbscrews = 1	1394b R/A UP w/Recessed Screws = 11
1394b 9 Pin Friction Fit = 2	1394b R/A DOWN w/Recessed Screws = 12
1394a 6 Pin w/Thumbscrews = 3	1394b 9 Pin Exit RIGHT w/Screw = 13
1394a 6 Pin Friction Fit = 4	1394b 9 Pin Exit LEFT w/Screw = 14
1394a 6 Pin w/Latches = 5	1394a 6 Pin R/A (Cable Exit Pin 1) = 15
1394b 9 Pin R/A UP = 6	1394a 6 Pin R/A (Cable Exit Pin 6) = 16
1394b 9 Pin R/A DOWN = 7	1394a 6 Pin Female = 17
1394b 9 Pin Exit RIGHT = 8	1394a 6 Pin R/A (Cable Exit Pin 1) = 18
1394b 9 Pin Exit LEFT = 9	1394a 6 Pin R/A (Cable Exit Pin 6) = 19
1394b 9 Pin Female = 10	

Option: Length in Meters

- * Cable type 1: Suitable up to 4.5M
- * Cable type 2: Suitable up to 8M
- * Cable type 3: Suitable for 6 - 10M
- * Cable type 4: Is Not compatible w/Conn. Type: 5

Physical:

Cable Color:	Black
Shell Color:	Black
Shell Construction:	Pre-molded in Polyethelene, fully shielded and over-molded in black PVC.
Cable Construction:	Meets industry S-400 and S-800 standards. All cables are fully certified.

REV. C

CONNECTOR TYPE OPTIONS:



1394b 9 Pin
w/Thumbscrews



1394b 9 Pin
Friction Fit



1394a 6 Pin
w/Thumbscrews



1394a 6 Pin
Friction Fit



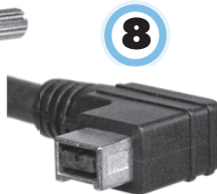
1394a 6 Pin
w/Latches



1394b 9 Pin
R/A UP



1394b 9 Pin
R/A DOWN



1394b 9 Pin
Exit RIGHT
Friction Fit



1394b 9 Pin
Exit LEFT
Friction Fit



1394b 9 Pin
Female
w/Removeable Hardware



1394b R/A UP
w/Recessed Screws



1394b R/A DOWN
w/Recessed Screws



1394b 9 Pin
Exit RIGHT
w/Recessed Screw



1394b 9 Pin
Exit LEFT
w/Recessed Screw



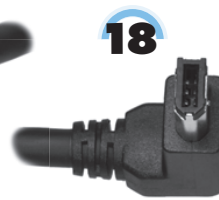
1394a 6 Pin R/A
(Cable Exit Pin 1)
Friction Fit



1394a 6 Pin R/A
(Cable Exit Pin 6)
Friction Fit



1394a 6 Pin
Female
Friction Fit



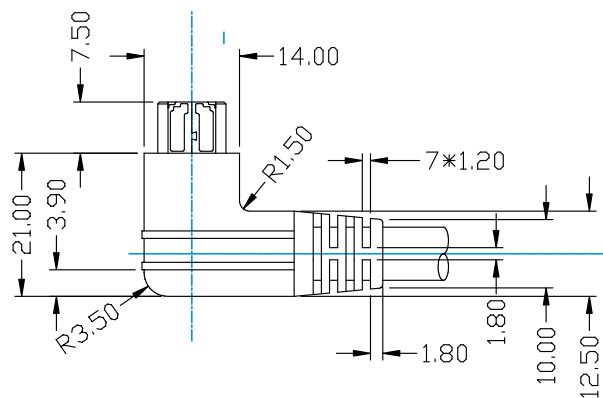
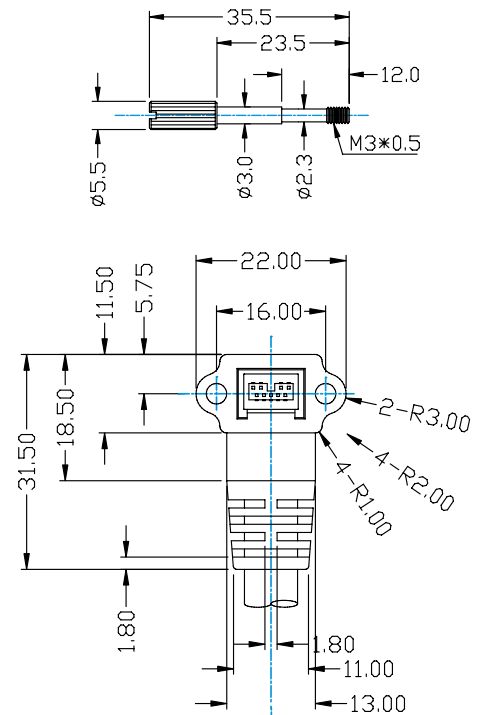
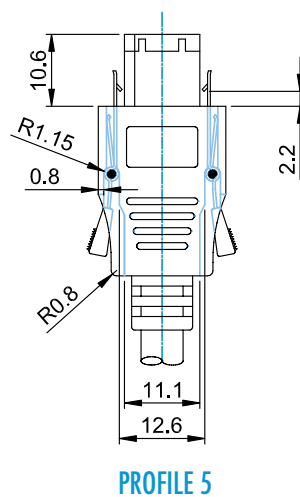
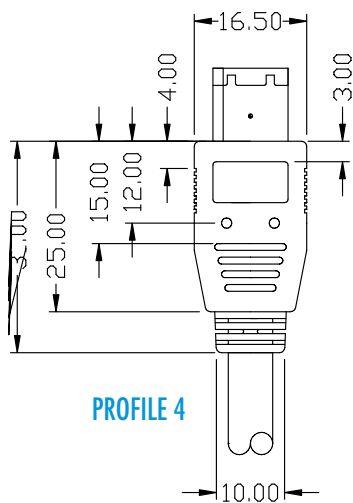
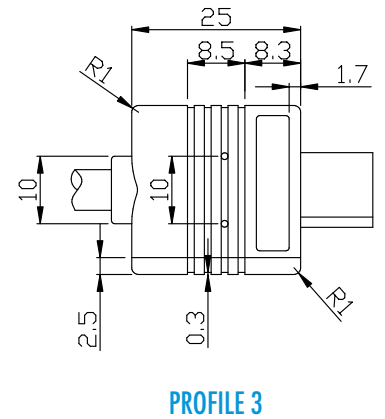
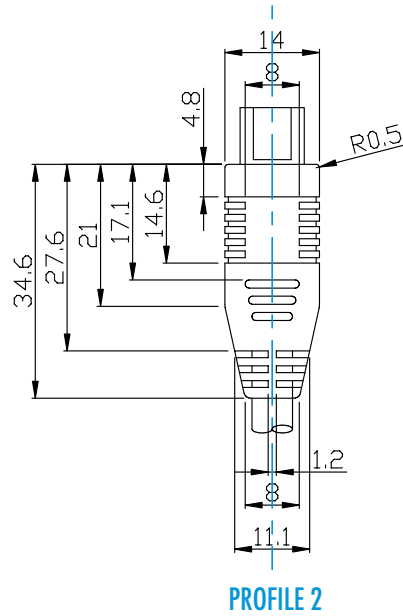
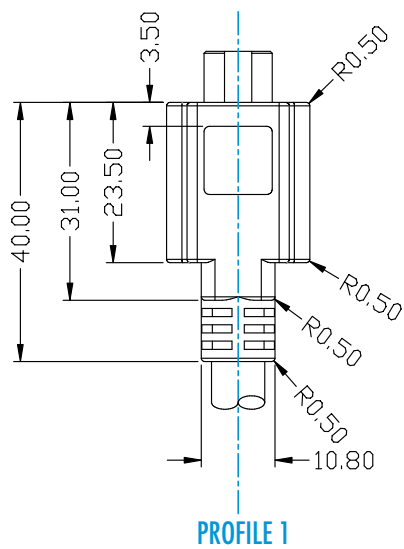
1394a 6 Pin R/A
(Cable exit Pin 1)
Friction Fit



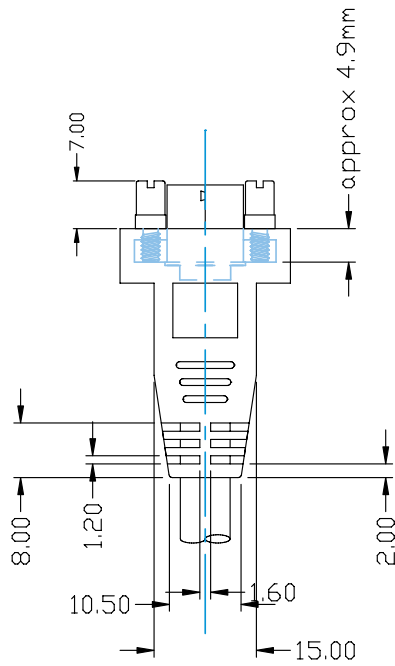
1394a 6 Pin R/A
(Cable Exit Pin 6)
Friction Fit

See page 12 & 13 for profile drawings.

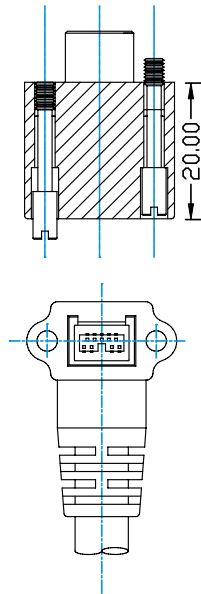
REV. C



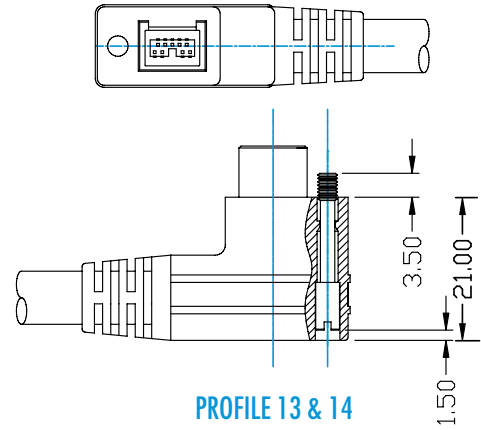
REV. C



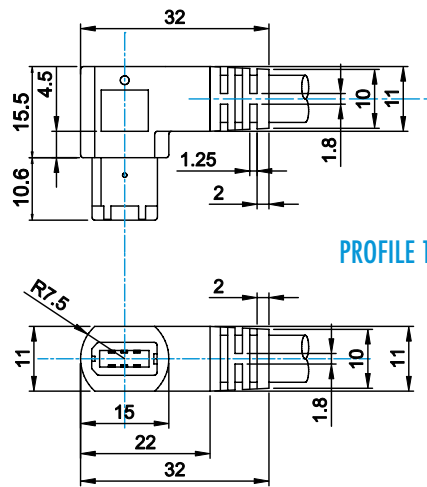
PROFILE 10



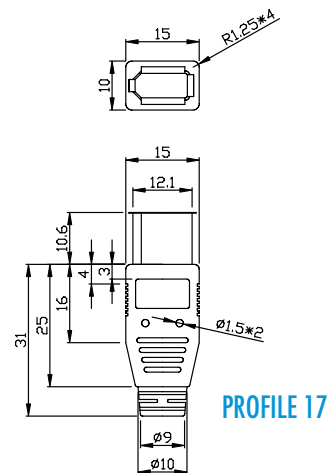
PROFILE 11 & 12



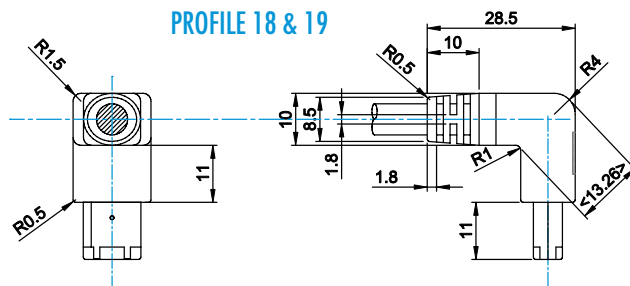
PROFILE 13 & 14



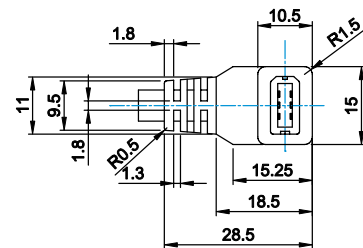
PROFILE 15 & 16



PROFILE 17



PROFILE 18 & 19



REV. C