

# Darkroom Kits Clean Darkroom Kits

DRU  
DRUC

These darkrooms are composed of a steel frame and block out curtains.

- All five sides of the room are covered with a black-out curtain.
- White LED penlights are available from OptoSigma to check work while in the darkroom.
- Please consider size of your equipment/table when selecting a darkroom size.

Application Systems

Optics & Optical Coatings

Opto-Mechanics

Bases

Manual Stages

Actuators & Adjusters

MotORIZED Stages

Light Sources & Laser Safety

Index

Guide

Vibration Isolation Systems

Optical Tables

Darkrooms/  
Dark Boxes



Optical Bases

Posts

Brackets

Adapters

Tools

Type	Darkroom Kits DRU	Clean Darkroom Kits DRUC
Exterior		
Features	<ul style="list-style-type: none"> <li>● Allows easy installation of a darkroom space indispensable for image measurements, exposure testing, and optical measurements.</li> <li>● Easy to dismantle, making it convenient for transportation and storage.</li> </ul>	<ul style="list-style-type: none"> <li>● Allows easy installation of a clean darkroom space indispensable for highly accurate and reliable optical measurements, testing, and other tasks.</li> <li>● HEPA filters provide Class 100 dust collection efficiency in terms of cleanliness at the air outlet, with wind speed of approximately 0.5m/s. Although it varies according to the darkroom size, the cleanliness inside the darkroom is roughly Class 7 (Class 10,000) within 5 minutes after power-up.</li> <li>● Fitted with an exhaust type compact ventilation fan.</li> </ul>
Black-out Curtain	Material	Obverse side: Polyester, Reverse side: Neoprene rubber
	Light Blocking Effect	Class 1 shading ability (99.99~100%)
	Fire Retardancy	Fire retardant

### Guide

- ▶ This product comes as a kit including a black-out curtain, pipes and a plastic hammer.
- ▶ Estimated time required for assembly: (e.g.) DRU-1816 will take about 30 minutes (with two people).
- ▶ To ensure optimal cleanliness, wear clean room garments while working in a darkroom. Clean room garments are available for purchase.

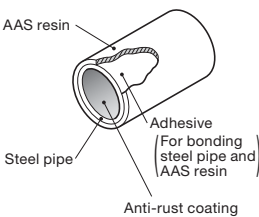
### Attention

- ▶ The blackout curtains have a flap-type entrance where the blackout curtain overlaps in the center entrance way. Curtain-rail-type blackout curtains are also available, but reduce the light blocking. Contact our Sales Division for more information.
- ▶ Darkroom kits include curtain tie clips.
- ▶ Custom sizes or shapes not listed in the catalog are available. Contact our Sales Division for more information.

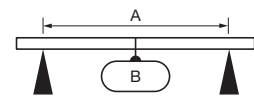
### Frame Pipes

The pipes used for the skeleton framework of the darkroom kits and clean darkroom kits are  $\phi 28\text{mm}$  steel frames. The structure and strength are as shown in the following figure. These pipes can be readily connected and assembled with T- and L-shaped joint pipes using a plastic hammer.

#### Structure



#### Strength



A [Dimensions]	B [Max. Strength]
450mm	about 1,666N (170kgf)
900mm	about 784N (80kgf)
1,800mm	about 392N (40kgf)

### Specifications

Darkroom Kits Part Number	Clean Darkroom Kits Part Number	Frontage [mm]	Depth [mm]	Height [mm]
DRU-1212	DRUC-1212	1,200	1,200	2,000
DRU-1515	DRUC-1515	1,500	1,500	2,000
DRU-1816	DRUC-1816	1,800	1,600	2,000
DRU-2017	DRUC-2017	2,000	1,700	2,000
DRU-2219	DRUC-2219	2,200	1,900	2,000
DRU-2819	DRUC-2819	2,800	1,900	2,000
DRU-3020	DRUC-3020	3,000	2,000	2,000