

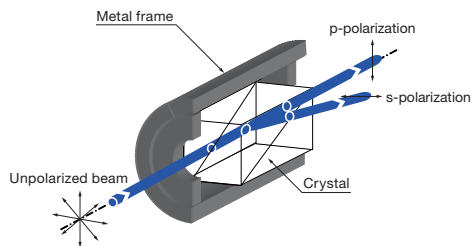
# Roshon Polarizing Prism | RSPCQ/RSPMF

The polarizer separates the incident light into two linearly polarized lights that cross perpendicular. It corresponds to the wide wavelength range from ultraviolet to infrared.

- P polarized light is emitted straight without the displacement from the optical path, and S-polarized light is emitted with a separation angle.
- We offer the RSPCQ-10 of crystalline quartz product and RSPMF-10 of  $MgF_2$  single crystal corresponding to the broad-band more than DUV.

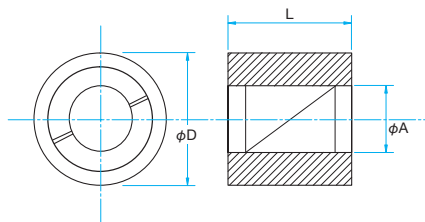


## Schematic



## Outline Drawing

(in mm)



- Tolerance  
Diameter  $\phi D \pm 0.1$   
Length  $L \pm 0.1$

## Specifications

Beam Deviation	<math>< 3^\circ</math>
Transmitted wavefront distortion	$\lambda/4$
Coating	Uncoated
Laser Damage Threshold	$0.3J/cm^2$ (Pulse duration 10ns)
Surface Quality (Scratch-Dig)	20-10
Material of metal frame	Aluminum Finishing: Black anodized

## Guide

- ▶ If you need anti-reflective coating, please contact our Sales Division with your specific request.

## Attention

- ▶ The incident angle changes and the extinction ratio of linear polarization of the transmitted light also changes.

## Specifications

Part Number	Material	Wavelength Range [nm]	Extinction ratio	Separation angle [°]	$\phi A$ [mm]	$\phi D \times L$ [mm]
RSPCQ-10	Quartz	200 – 2300	$< 2 \times 10^{-4}$	1 – 1.5	$\phi 10$	25.4 × 28
RSPMF-10	$MgF_2$	130 – 7000	$< 1 \times 10^{-4}$	1 – 2	$\phi 10$	25.4 × 28

## Compatible Optic Mounts

GTPC-PH30 / GTPC-SPH30 / GTPC-ADP

Application Systems

Optics &amp; Optical Coatings

Opto-Mechanics

Bases

Manual Stages

Actuators &amp; Adjusters

Motorized Stages

Light Sources &amp; Laser Safety

Index

Guide

Mirrors

Beamsplitters

Polarizers

Lenses

Multi-Element Optics

Filters

Prisms

Substrates/Windows

Optical Data

Maintenance

Selection Guide

Polarizing Beamsplitters

Waveplates

Polarizers