

This is a beam expander for CO₂ Laser (wavelength : 10.6μm) made of zinc selenide (ZnSe) lens. It will be used in laser marking system and so on.

- Diopter correction function is provided, customer can fine-tune the collimated beam.
- Because it is a beam expander type of the Galilean, it is compact and has good aberration characteristics.
- Since the lens of zinc selenide has an anti-reflection coating, loss of light intensity is kept low.



Specifications	
Material	Zinc selenide (ZnSe)
Design wavelength	10.6μm
Coating	Dielectric multi-layer coating
Transmittance	>98.5%

Guide

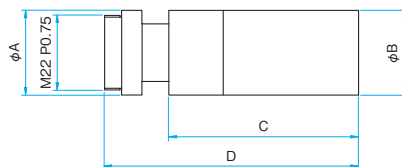
- ▶ Beam expanders other than for CO₂ laser (10.6μm) are available.
[Reference](#) B200
- ▶ We provide the laser beam expander holders (KLH-BE) for optical-axis adjustment of the laser beam expander.
[WEB Reference](#) [Catalog Code](#) W4147

Attention

- ▶ It is not possible to obtain a decreased beam diameter by using the beam expander on the opposite side. Use it properly to obtain an adequate optical solution.
- ▶ Make sure that the beam expander is well aligned with the laser light axis. If the beam expander is inclining, the output light will also be inclined.

Outline Drawing

(in mm)



Part Number	φA [mm]	φB [mm]	C [mm]	D [mm]
BE-10600-3	φ25	φ25	50	65
BE-10600-4	φ25	φ25	55	75
BE-10600-5	φ30	φ30	58	78

Specifications

Part Number	Expansion ratio	Input aperture (MAX) [mm]	Output Clear aperture [mm]	Diameter [mm]
BE-10600-3	3	φ4	φ12	φ25
BE-10600-4	4	φ4	φ16	φ25
BE-10600-5	5	φ4	φ20	φ30

Important: Treatment of ZnSe optics

Important: Treatment of ZnSe optics
ZnSe (Zinc selenide) is Poisonous and Deleterious Substances classified as legal, Depending on the specifications, the certificate of delivery may be required acquisition of Poisonous and Deleterious Substances.
In addition, ZnSe Optics disposal after use is prohibited. When lenses that are no longer needed, please return them to us.
However, it is only in our products. The above is a case in Japan and please ask your local sales contact about requirements outside Japan.

Compatible Optic Mounts

KLH-BE-M22H

Application Systems

Optics & Optical Coatings

Opto-Mechanics

Bases

Manual Stages

Actuators & Adjusters

Motoeized Stages

Light Sources & Laser Safety

Index

Guide

Mirrors

Beamsplitters

Polarizers

Lenses

Multi-Element Optics

Filters

Prisms

Substrates/Windows

Optical Data

Maintenance

Selection Guide

Achromats

Focusing Lenses

fθ Lenses

Objectives

Expanders

Others