

# Mini-Fiber Optics Holders Adapter for Mini-Fiber Optic

**MFH**  
**MFH-ADP**



Catalog Code W4523  
Catalog Code W4524

Holders used for holding optical fiber strands of various jacket diameters (coating diameters). By replacing the mounting adapters (MFH-ADP), these holders can mount on various stages in addition to two-axis pinholes/objective holders.

- Using the V groove and the resin clamps, these holders hold the tip of an optical fiber where the coating is removed for approximately 15mm. The V groove and the resin clamps also fix the 900µm jacket right next to the portion to immobilize the optical fiber.
- The resin clamps have built-in magnetizable set bolts, and gently fasten an optical fiber by the magnetic force of the magnets of these fiber holders.
- There is a keyway on the bottom of these holders. The keyway can be installed on the keys of various mounting adapters (MFH-ADP) to slide back and forth. The holders are securely fastened on the mounting adapters with set bolts.

Application Systems

Optics & Optical Coatings

Opto-Mechanics

Bases

Manual Stages

Actuators & Adjusters

MotORIZED Stages

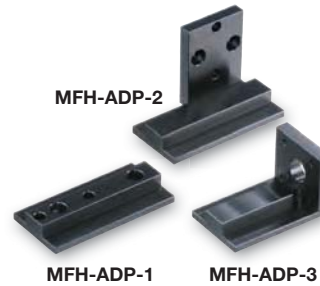
Light Sources & Laser Safety

Index



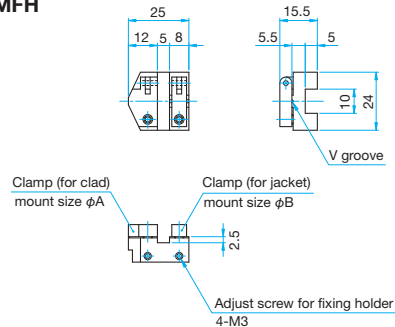
### Attention

► These holders cannot be installed in the fiber alignment systems (DAU). Please contact our International Sales Division for holders for the fiber alignment systems.



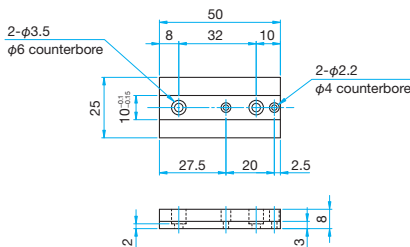
## Outline Drawing

### MFH



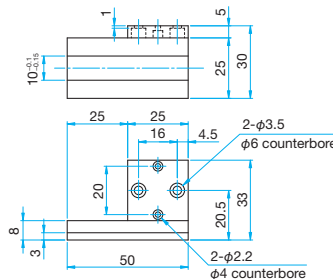
### MFH-ADP-1

1 Pan head screw M2x6...2 screws  
Pan head screw M3x6...2 screws



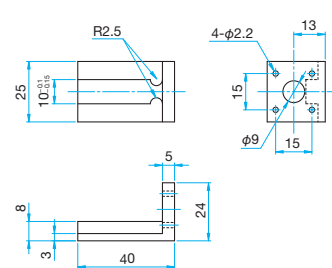
### MFH-ADP-2

1 Pan head screw M2x6...2 screws  
Pan head screw M3x6...2 screws



### MFH-ADP-3

1 Pan head screw M2x8...4 screws



Holder	Primary material: Aluminum Finish: Black Anodized		
Part Number	Jacket diameter $\phi B$ [ $\mu m$ ]	Cladding diameter $\phi A$ [ $\mu m$ ]	Weight [kg]
<b>MFH-250</b>	$\phi 150 - \phi 250$	$\phi 60 - \phi 130$	0.03
<b>MFH-500</b>	$\phi 500$	$\phi 125 - \phi 250$	0.03
<b>MFH-900</b>	$\phi 900$	$\phi 125 - \phi 250$	0.03

Adapter	Primary material: Aluminum Finish: Black Anodized	
Part Number	Overview	Weight [kg]
<b>MFH-ADP-1</b>	For fixing flat surface (M2, M3 counterbored)	0.02
<b>MFH-ADP-2</b>	For fixing perpendicular (M2, M3 counterbored) to convert the 90° orientation	0.03
<b>MFH-ADP-3</b>	For fixing perpendicular (M2 counterbored)	0.03