

Gimbal Beamsplitter Holders

BHAN-S/BHAN-DM

RoHS

W4011

The frame of these mounts are narrow to accommodate a greater clear aperture at 45 degrees incident. The transmitted beam diameter is just about the same as the reflected beam diameter. Appropriate for beam branching optical systems or Michelson interferometers.

- BHAN-S functions the same as MHAN.



Guide

- ▶ The RO-20-60 post (diameter $\phi 20\text{mm}$, length 60mm) is included but it can be replaced with other sizes. Special tools are required to remove the post. Different sized post can be specified at the time of purchase.

Attention

- ▶ Resin rings are sold separately and are recommended.
- ▶ BHAN uses retaining rings unique to this mount. Contact the Sales Division for replacements..
- ▶ The mount will have some backlash if a large wedged beamsplitter is used. Wedges work better when they are secured on their edges. Kinematic mirror holders (MHG-NL) are recommended for circular wedges. [Reference](#) C014

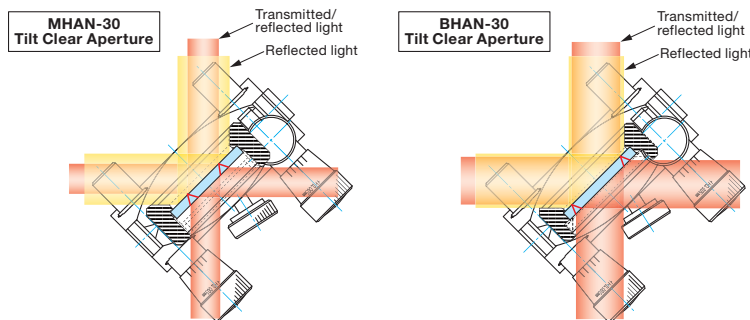
Screw Type										Primary material: Aluminum Finish: Black Anodized
Part Number	Options specified*	Compatible Optics Diameter [mm]	Compatible Optics Thickness [mm]	Fine Adjustment Range Tilt [°]	Fine Adjustment Range Rotation [°]	Fine Adjustment Resolution Tilt [°/rotation]	Fine Adjustment Resolution Rotation [°/rotation]	Fine Adjustment Resolution Tilt [°/rotation]	Fine Adjustment Resolution Rotation [°/rotation]	Weight [kg]
BHAN-30S	UU	$\phi 30$	3 – 5	± 4	± 4	about 0.54	about 0.68			0.4
BHAN-50S	UU	$\phi 50, \phi 50.8$	5 – 8	± 4	± 4	about 0.31	about 0.48			0.5

* For specifying options, please refer to "Conversion of Posts, Post Holders and Pedestal Bases of Holders". [Reference](#) C007

Precision Type													Primary material: Aluminum Finish: Black Anodized
Part Number	Options specified*	Compatible Optics Diameter [mm]	Compatible Optics Thickness [mm]	Fine Adjustment Range Tilt [°]	Fine Adjustment Range Rotation [°]	Fine Adjustment Resolution Tilt [°/rotation]	Fine Adjustment Resolution Rotation [°/rotation]	Ultra Fine Adjustment Resolution Tilt [°/rotation]	Ultra Fine Adjustment Resolution Rotation [°/rotation]	Ultra Fine Adjustment Resolution Tilt [°/DIV]	Ultra Fine Adjustment Resolution Rotation [°/DIV]	Indicator Conversion	Weight [kg]
BHAN-30DM	UU	$\phi 30$	3 – 5	± 4	± 4	about 1.08	about 1.35	about 0.11	about 0.14	about 0.002	about 0.002		0.45
BHAN-50DM	UU	$\phi 50, \phi 50.8$	5 – 8	± 3	± 4	about 0.71	about 0.95	about 0.07	about 0.10	about 0.001	about 0.002		0.55

* For specifying options, please refer to "Conversion of Posts, Post Holders and Pedestal Bases of Holders". [Reference](#) C007

Reflection and Transmission Clear Aperture at 45° Incidence

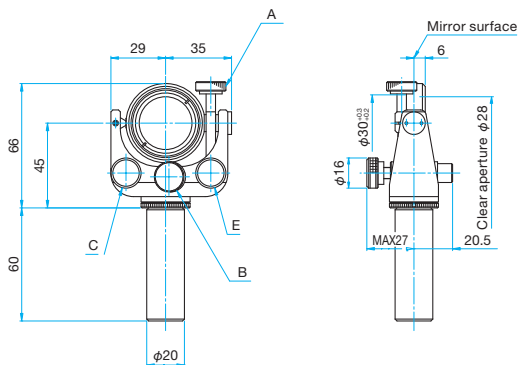
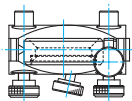


Clear Aperture of Beamsplitter Holder

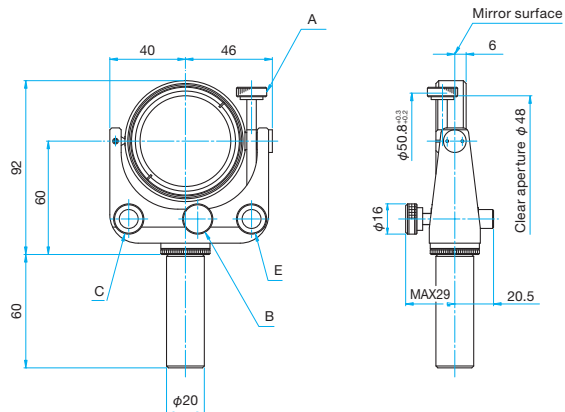
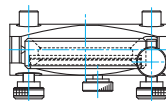
Part Number	Beamsplitter Thickness [mm]	Transmitted/Reflected Beam Clear Aperture	
		45° incidence [mm]	0° incidence [mm]
BHAN-30S	3	15.4	28
MHAN-30S	3	9.9	27
BHAN-50S	5	31.1	48
MHAN-50S	5	18.3	47
MHAN-20S	2	2.2	17
MHAN-25.4S	3	6.7	22
MHAN-40S	4	14.7	37
MHAN-60S	6	26.1	57
MHA-80S	8	34.5	76
MHA-100S	10	50.0	96
MHA-130S	13	69.3	126
MHA-150S	15	80.2	146

Outline Drawing

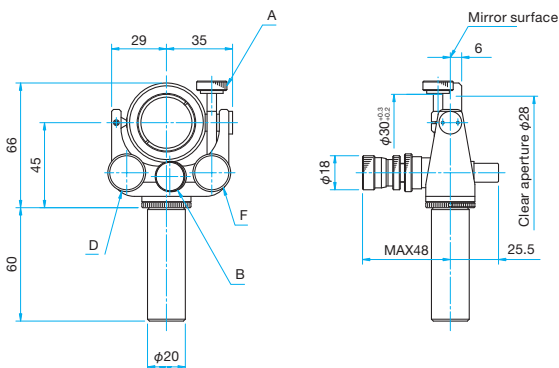
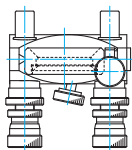
BHAN-30S M6 P1



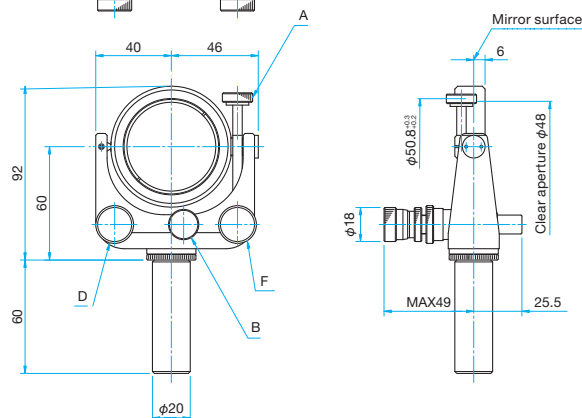
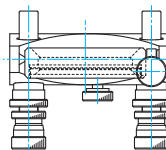
BHAN-50S M6 P1



BHAN-30DM M6 P1



BHAN-50DM M6 P1



A: Tilt coarse/fine movement switching clamp
 B: Rotational coarse/fine movement switching clamp
 C: Rotational fine movement screw

D: Rotational fine movement Differential micrometer head
 E: Tilt fine movement screw
 F: Tilt fine movement Differential micrometer head

Application Systems

Optics & Optical Coatings

Opto-Mechanics

Bases

Manual Stages

Actuators & Adjusters

MotORIZED Stages

Light Sources & Laser Safety

Index

Guide

Mirrors

Lenses

Prisms

Polarizers

Lasers

Beam Shaping Diffusers

Filters

Shutter

Others

Fiber