

Vertical Control Gimbal Beamsplitter Holders

BSHL-2/BSHL-TF

RoHS

These vertical holders are ideal for small spacers due to their thin design and vertical adjustment. Holders can be positioned close to each other reducing optical system size.



- There are two types, one is fitted with knobs on top (BSHL-2), and the other is without knobs and adjusted by hex wrench (BSHL-TF).
- This product provides large clear aperture of transmitted beam even if beamsplitter is placed at 45 degrees.
- The gimbal design maintains the center position of mirror even when fine adjusted.
- Adjustment screws can be fixed with the clamp screws on the back of the mounts.
- Two M4 mounting holes are also provided on both sides to mount the holder horizontally.

Guide

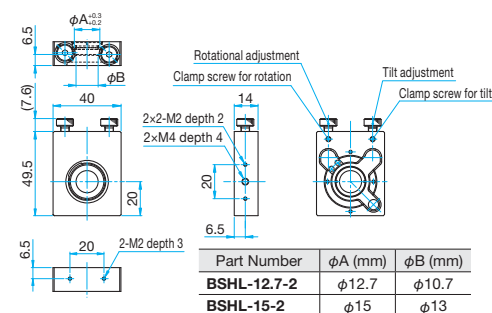
- ▶ M6 mounting plates are available for purchase. [Reference](#) C023
- ▶ Can be mounted on post stands (PST-*) using the M4 tapped holes of holders. [WEB Reference](#) [Catalog Code](#) W6039
- ▶ Custom baseplates can be made to order.

Attention

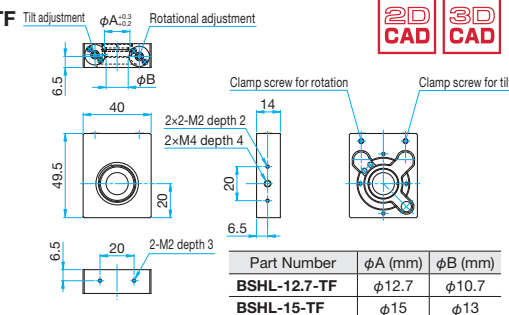
- ▶ The locking clamps prevent the adjustment screws from rotating.
- ▶ To adjust the BSHL-TF mounts, a hex wrench is required. A ball end wrench set (SKB-JBX6) is available. [WEB Reference](#) [Catalog Code](#) W6077

Outline Drawing

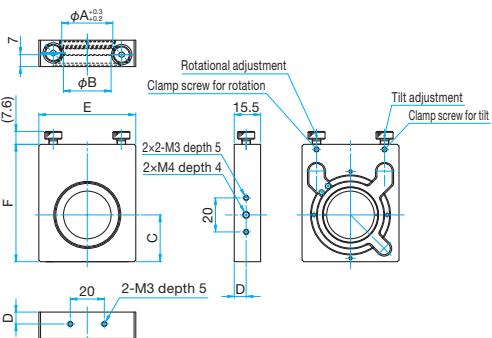
BSHL-12.7-2
BSHL-15-2



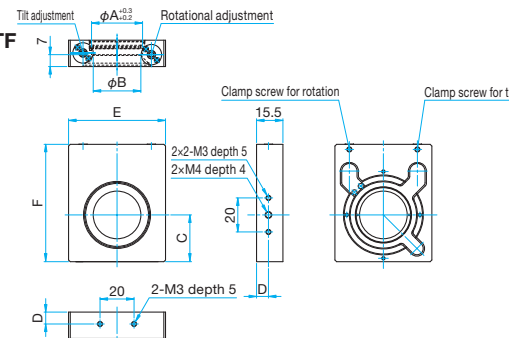
BSHL-12.7-TF
BSHL-15-TF



BSHL-20-2
BSHL-25.4-2
BSHL-30-2



BSHL-20-TF
BSHL-25.4-TF
BSHL-30-TF



With Knobs Part Number	Without Knobs Part Number	φA (mm)	φB (mm)	C (mm)	D (mm)	E (mm)	F (mm)
BSHL-20-2	BSHL-20-TF	φ20	φ18	25.2	7	50.4	64
BSHL-25.4-2	BSHL-25.4-TF	φ25.4	φ23.4	25.2	7	50.4	64
BSHL-30-2	BSHL-30-TF	φ30	φ28	27.5	7	57	69

Specifications

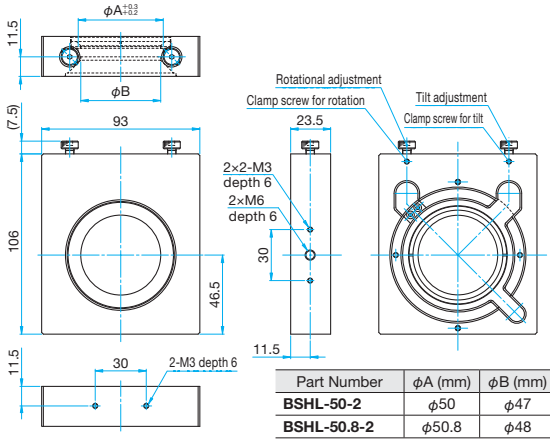
With Knobs Part Number	Without Knobs Part Number	Compatible Optics		45° Incidence		Fine Adjustment Range		Fine Adjustment Resolution		Weight [kg]
		Diameter [mm]	Thickness [mm]	Reflected Beam Diameter [mm]	Central Transmission Beam Diameter [mm]	Tilt [°]	Rotation [°]	Tilt [°/rotation]	Rotation [°/rotation]	
BSHL-12.7-2	BSHL-12.7-TF	φ12.7	1 – 3	φ6.8	φ2.51	±1.5	±1.2	0.6	0.6	0.06
BSHL-15-2	BSHL-15-TF	φ15	1 – 3	φ8.4	φ4.13	±1.5	±1.2	0.6	0.6	0.06
BSHL-20-2	BSHL-20-TF	φ20	3 – 5	φ12	φ7.67	±1.2	±1.2	0.35	0.45	0.11
BSHL-25.4-2	BSHL-25.4-TF	φ25.4	3 – 5	φ15.8	φ11.49	±1.2	±1.2	0.35	0.45	0.11
BSHL-30-2	BSHL-30-TF	φ30	3 – 5	φ19	φ14.74	±1.2	±1.2	0.34	0.4	0.13
BSHL-50-2	BSHL-50-TF	φ50	5 – 8	φ31	φ27.39	±1.5	±1.5	0.23	0.27	0.48
BSHL-50.8-2	BSHL-50.8-TF	φ50.8	5 – 8	φ31	φ28.10	±1.5	±1.5	0.23	0.27	0.48

Primary material: Aluminum
Finish: Black Anodized

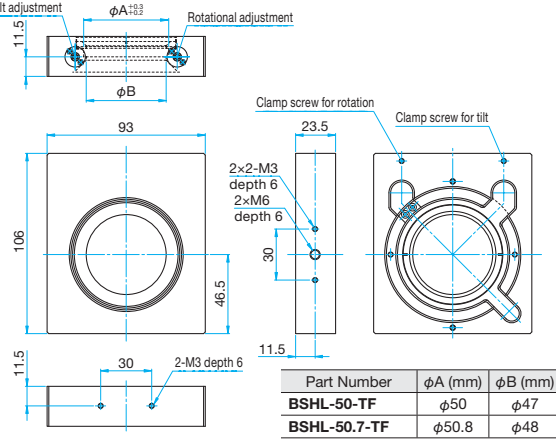


Outline Drawing

BSHL-50-2/BSHL-50.8-2



BSHL-50-TF/BSHL-50.8-TF



Option Options for Vertical Control Gimbal Beamsplitter Holders | BSHL-BP



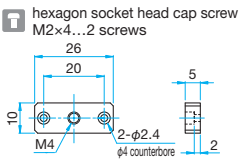
Base plates for mounting BSHL mirror holders on optical breadboards or optical baseplates. Base plates are available to mount the BSHL at 0 degrees and 45 degrees incidence positions.

- BSHL-BPRO adapter plates for mounting posts (RO-12/20) on the bottom of the BSHL.
- BSHL-12.7BP mounts BSHL-12.7/15 holders on base plates with M2 threads on 10mm spacing at 0 degrees and 45 degrees incidence positions.
- When securing with an M4 thread, use the M6-M4 conversion adapter (AD-M6-M4). [WEB Reference](#) Catalog Code W6030

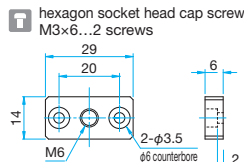


Outline Drawing

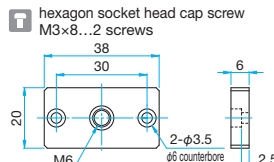
BSHL-12.7BPRO



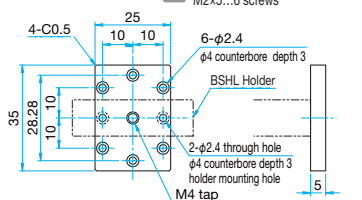
BSHL-20BPRO



BSHL-50BPRO

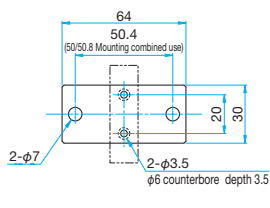


BSHL-12.7BP



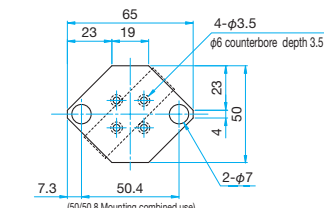
BSHL-25.4BP-0-/0UU

hexagon socket head cap screw M3x6...2 screws, M6x10...2 screws (0)
hexagon socket head cap screw M3x6...2 screws, 1/4-20UNCx3/8...2 screws (0UU)



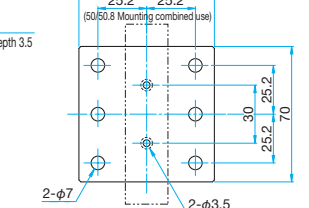
BSHL-25.4BP-45-/45UU

hexagon socket head cap screw M3x6...2 screws, M6x10...2 screws (45)
hexagon socket head cap screw M3x6...2 screws, 1/4-20UNCx3/8...2 screws (45UU)



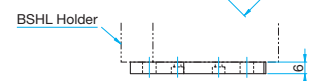
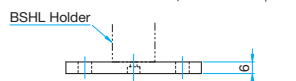
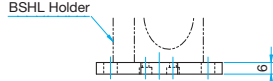
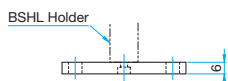
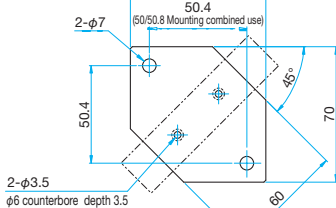
BSHL-50.8BP-0-/0UU

hexagon socket head cap screw M3x6...2 screws, M6x10...6 screws (0)
hexagon socket head cap screw M3x6...2 screws, 1/4-20UNCx3/8...6 screws (0UU)



BSHL-50.8BP-45-/45UU

hexagon socket head cap screw M3x6...2 screws, M6x10...2 screws (45)
hexagon socket head cap screw M3x6...2 screws, 1/4-20UNCx3/8...2 screws (45UU)



Specifications

Primary material: Aluminum
Finish: Black Anodized

Part Number		Type	Compatible Holders	Weight [kg]
METRIC	INCH			
BSHL-12.7BPRO	—	M4-Rod	BSHL-12.7, BSHL-15	0.01
BSHL-20BPRO	—	M6-Rod	BSHL-20, BSHL-25.4, BSHL-30	0.01
BSHL-50BPRO	—	M6-Rod	BSHL-50, BSHL-50.8	0.02
BSHL-12.7BP	—	Combined use 0° and 45° Incidence	BSHL-12.7, BSHL-15	0.01
BSHL-25.4BP-0	BSHL-25.4BP-0UU	0° Incidence	BSHL-20, BSHL-25.4, BSHL-30	0.03
BSHL-25.4BP-45	BSHL-25.4BP-45UU	45° Incidence	BSHL-20, BSHL-25.4, BSHL-30	0.03
BSHL-50.8BP-0	BSHL-50.8BP-0UU	0° Incidence	BSHL-50, BSHL-50.8	0.08
BSHL-50.8BP-45	BSHL-50.8BP-45UU	45° Incidence	BSHL-50, BSHL-50.8	0.06

Application Systems

Optics & Optical Coatings

Opto-Mechanics

Bases

Manual Stages

Actuators & Adjusters

Motoeized Stages

Light Sources & Laser Safety

Index

Guide

Mirrors

Lenses

Prisms

Polarizers

Lasers

Beam Shaping Diffusers

Filters

Shutter

Others

Fiber