

# Multi Controller Micro-step Driver Box with I/O

**SMC**  
**SDB**
**SMC**

 Catalog Code **W2035**
**Application Systems**

 Optics &  
Optical  
Coatings

 Opto-  
Mechanics

Bases

 Manual  
Stages

 Actuators &  
Adjusters

 Motoeized  
Stages

 Light Sources &  
Laser Safety

Index

Microscope Unit

**Alignment**

Interferometers

 Inspection/  
Observation

Bio-photonics

Laser Processing

**Multi controllers developed for controlling alignment systems.**

- These controllers come with expansion boards installed, which are necessary for equipment production together with the alignment software developed by Sigma Koki.
- The desktop type FAPC comes with the alignment software ASS-02 installed, and the rack mount type FAPC comes with ASS-04 installed.


**Main Specifications**

OS	Windows®7
Motion 4axis/1	MC8042P (manufactured by NOVA electronics, Inc.) 4-axis independent control
Motion 8axis/1	MC8082P (manufactured by NOVA electronics, Inc.) 8-axis independent control
AD	PCI-3155 (manufactured by Interface Corporation)/16 bit high speed AD conversion/Single end 16CH, differential 8CH input
GP-IB	PCI-4304 (manufactured by Interface Corporation) IEE 488 compliant GP-IB 1CH type equipped with FIFO

\* Option  
PCI-2726CM (manufactured by Interface Corporation) (This board can be added when the number of inputs/outputs exceeds the inputs/outputs of the standard driver box.)

- Sink type current drive photocoupler 32 inputs
- Sink type high current open collector 32 outputs

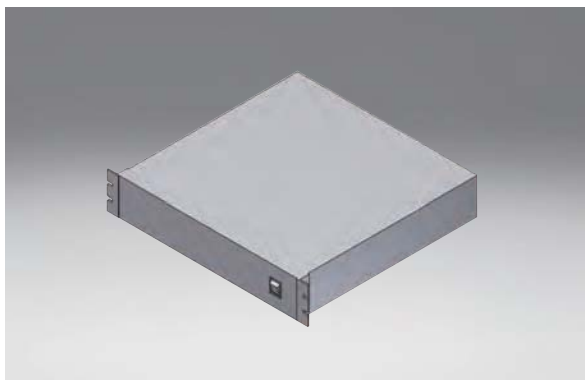
**Specifications**

Part Number	Axis	Software
<b>SMC-04A2</b>	4 axes	ASS-02
<b>SMC-08A2</b>	8 axes	ASS-02
<b>SMC-08A4</b>	8 axes	ASS-04
<b>SMC-12A4</b>	12 axes	ASS-04
<b>SMC-16A4</b>	16 axes	ASS-04

**SDB**

 Catalog Code **W2036**

- Low-profile 19-inch rack mount type.
- These micro-step driver boxes have the same shape, emphasizing extensibility.
- Compact design achieved by built-in drive power supply.
- Capable of setting 16 types of micro-steps, allowing high precision control according to the application.
- It is shipped with such as remote control for peripheral devices, the driving of the solenoid valve, signal tower display, and digital IO required for production equipment.


**Specifications**

Part Number	Axis	A [mm]	B [mm]
<b>SDB-04</b>	4 axes	31.8	44
<b>SDB-08</b>	8 axes	76.2	88

**Outline Drawing**

(in mm)

