

Multi Controller Micro-step Driver Box with I/O

SMC
SDB
SMC
W2035
**Application
Systems**
**Optics &
Optical
Coatings**
**Opto-
Mechanics**
Bases
**Manual
Stages**
**Actuators &
Adjusters**
**Motoeized
Stages**
**Light Sources &
Laser Safety**
Index
Microscope Unit
Alignment
Interferometers
**Inspection/
Observation**
Bio-photonics
Laser Processing
Multi controllers developed for controlling alignment systems.

- These controllers come with expansion boards installed, which are necessary for equipment production together with the alignment software developed by Sigma Koki.
- The desktop type FAPC comes with the alignment software ASS-02 installed, and the rack mount type FAPC comes with ASS-04 installed.


Main Specifications

OS	Windows®7
Motion 4axis/1	MC8042P (manufactured by NOVA electronics, Inc.) 4-axis independent control
Motion 8axis/1	MC8082P (manufactured by NOVA electronics, Inc.) 8-axis independent control
AD	PCI-3155 (manufactured by Interface Corporation)/16 bit high speed AD conversion/Single end 16CH, differential 8CH input
GP-IB	PCI-4304 (manufactured by Interface Corporation) IEE 488 compliant GP-IB 1CH type equipped with FIFO

* Option
PCI-2726CM (manufactured by Interface Corporation) (This board can be added when the number of inputs/outputs exceeds the inputs/outputs of the standard driver box.)

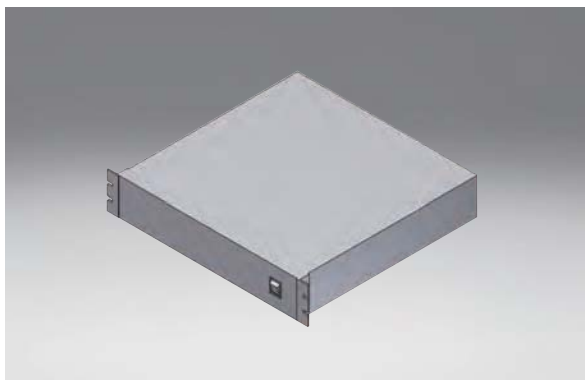
- Sink type current drive photocoupler 32 inputs
- Sink type high current open collector 32 outputs

Specifications

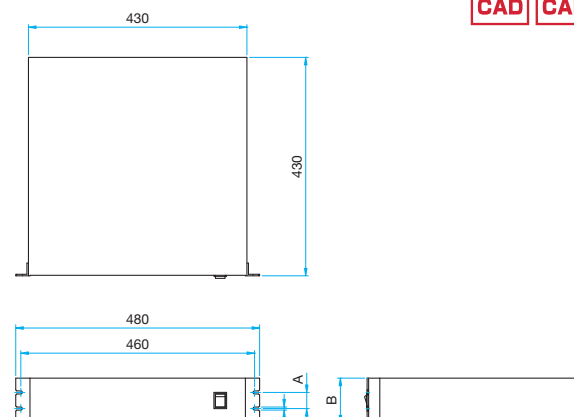
Part Number	Axis	Software
SMC-04A2	4 axes	ASS-02
SMC-08A2	8 axes	ASS-02
SMC-08A4	8 axes	ASS-04
SMC-12A4	12 axes	ASS-04
SMC-16A4	16 axes	ASS-04

SDB
W2036

- Low-profile 19-inch rack mount type.
- These micro-step driver boxes have the same shape, emphasizing extensibility.
- Compact design achieved by built-in drive power supply.
- Capable of setting 16 types of micro-steps, allowing high precision control according to the application.
- It is shipped with such as remote control for peripheral devices, the driving of the solenoid valve, signal tower display, and digital IO required for production equipment.


Outline Drawing

(in mm)


Specifications

Part Number	Axis	A [mm]	B [mm]
SDB-04	4 axes	31.8	44
SDB-08	8 axes	76.2	88