

# Lens Positioners | LACR/LACS

RoHS Catalog Code W2016

Motorized objective lens positioners designed for accuracy and repeatability using technology developed for our precision motorized stages.

Application Systems

Optics & Optical Coatings

Opto-Mechanics

Bases

Manual Stages

Actuators & Adjusters

Motorized Stages

Light Sources & Laser Safety

Index

Microscope Unit

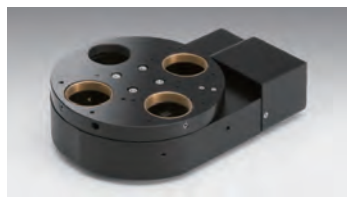
Alignment

Interferometers

Inspection/Observation

Bio-photonics

Laser Processing



### <Motorized Lens Turret: LACR-4H>

- Motorized turret has better accuracy and durability than traditional turrets due to elimination of mechanical detents.
- Includes 5-phase micro stepping motor and can achieve a resolution of less than a micron at the tip of objective lens.
- When used with the GIP-101 controller, objectives can be switched quickly and accurately either manually, using the push buttons on the controller, or automatically, using the computer interface.



### <Lens switching slider: LACS-2H-A>

- Motorized lens switcher is designed to hold 2 objective lenses, to provide precise movements and feasible speed.
- Using our proprietary extended contact bearing design to improve straightness.

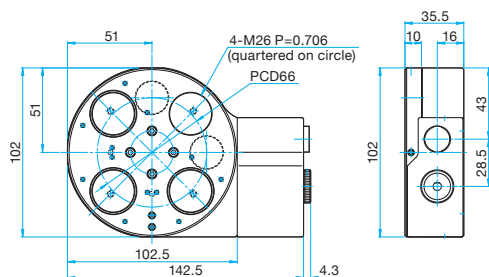
## Specifications

Part Number	LACR-4H	LACS-2H-A
Number of switched lens	4 holes (90°×4) (1hole: datum hole, 3holes: one-directional center core adjustment)	2 holes (1hole: datum hole, 1holes: one-directional center core adjustment)
Travel	∞ for both of clockwise and anticlockwise directions	35mm (Switching distance)
Motor	5-phase stepping motor (0.75A/phase)	5-phase stepping motor (0.75A/phase)
Guide Method	Bearing system	Extended contact bearing
Feeding Mechanism	Worm and worm wheel	Ball screw φ4 (1mm lead)
Travel per 1 pulse	0.01° (FULL) / 0.0002° (1/50 DIV)	2μm (FULL) / 0.1μm (20 divided)
Total pulse per table rotation	36,000 pulse (FULL)	—
Positional repeatability	≤0.02deg.	—
Switching reproducibility	≤ ±3μm (at the tip of objective lens)	≤ ±3μm (by the tip of objective lens)
Maximum travel speed (switch)	60°/sec (A→B, about 2.0sec)	35mm/sec (A→B, about 1.0sec)
Objective lens size	M26 P=0.706	M26 P=0.706
Load capacity [kg]	2	2
Weight [kg]	0.85	0.7

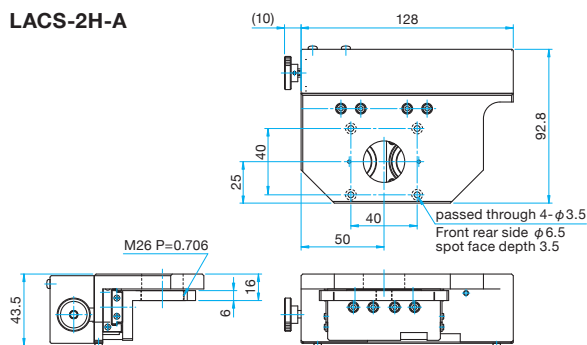
## Outline Drawing

(in mm)

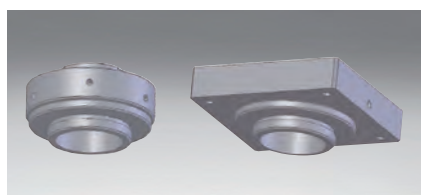
### LACR-4H



### LACS-2H-A



## Adapter | AOR-M26.0/AOS-M26.0

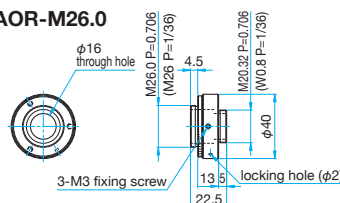


This adapter is for connecting the lens positioners (electric revolver/lens switching slider) to OUCI family microscope bodies .

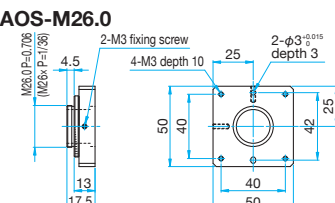
## Outline Drawing

(in mm)

### AOR-M26.0



### AOS-M26.0



## Specifications

Part Number	AOR-M26.0	AOS-M26.0
Compatible models	Motorized Lens Turret	Lens switching slider
Weight [kg]	0.1	0.08