

XY axis Preset Stages

MLT22

Stage size 15/25/40/60mm

RoHS

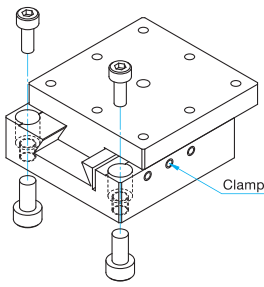
- Application Systems
- Machine Vision
- Manual Positions
- Motion Control Products
- Optical & Mirror Holder
- F A Parts
- Measurement &Control
- FA Electrical Parts
- Tool & Measure
- Cleanroom & AntiStatic
- Index
- X Axis
- XY Axis
- Z Axis
- XZ Axis
- XYZ Axis
- Rotation
- Goniometers /Tilt
- Multiaxis
- Linear Guide

Preset stages with dovetail slide guide and leadscrew adjustment system, suitable for assembly in systems.

- Ideal for less frequent operations, fine adjustment or permanent fixation.
- These stages have a block shape with minimal protrusions including the adjustment knob, in order to minimizing the installation space.

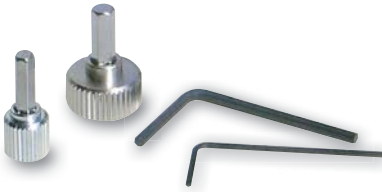


Mounting Method

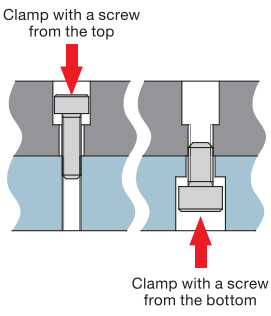


Guide

- A hex wrench with knob and clamping wrench are included.



Detailed Illustration



Top mounting
Tapped holes are used as counterbores because screws are smaller than tapped holes and will go in without any interference.

Bottom mounting
Clamp with screws that match the specification of tapped holes.

About Mounting Holes

The bottom mounting holes of preset stages are tapped holes. These stages allow mounting from the top or the bottom, convenient for securing on optical breadboards or other instruments as well as assembling in systems. Use the screws of the sizes listed in the table on the right for mounting.

Part Number	Secure from the top	Secure from the bottom
MLT22-15	M2	M2.6
MLT22-25	M2	M3
MLT22-40	M3	M4
MLT22-60	M4	M5

* When mounting from the top surface, slide the top surface to insert screws in mounting holes.

SPEC UP

Specifications					
Part Number		MLT22-15	MLT22-25	MLT22-40	MLT22-60
Table Size [mm]		15×15	25×25	40×40	60×60
Travel [mm]		±2	±3	±7	±10
Positioning Slide		Dovetail method	Dovetail method	Dovetail method	Dovetail method
Primary Material		Brass	Brass	Brass	Brass
Finish		Super black chrome	Super black chrome	Super black chrome	Super black chrome
Screw Pitch [mm]		0.4	0.5	0.5	0.5
Load Capacity [N]		9.8 (1.0kgf)	49 (5.0kgf)	98.1 (10.0kgf)	147 (15.0kgf)
Max. Moment Capacity	Travel Accuracy	Straightness [μm]	10	10	10
	Pitch [N·m]	0.5	2	3.75	5.1
	Roll [N·m]	0.5	2	3.75	5.1
	Yaw [N·m]	0.2	1	3	4
Moment Stiffness	Pitch [°/N·cm]	15	3.57	1.12	0.7
	Roll [°/N·cm]	15	3.57	1.12	0.7
Parallelism [μm]		100	100	100	100
Weight [kg]		0.03	0.11	0.3	0.83

- 15mm
- 25mm
- 40mm
- 50mm
- 60mm
- 70mm
- 80mm
- 100mm
- 120mm
- Others

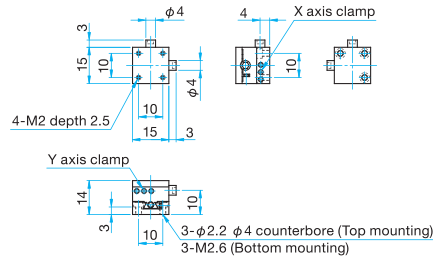
Catalog Code W7201



Outline Drawing

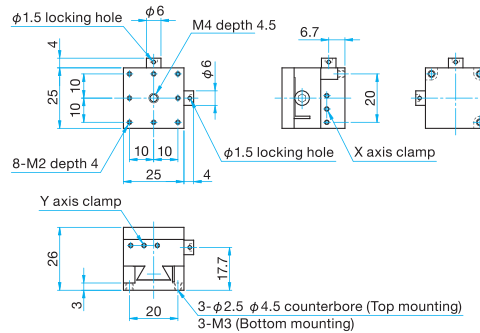
MLT22-15

- Pan head screw M2×5...3 screws, One 2.5mm hex wrench with knob, One 0.89mm hex wrench
 Wrench size for adjustment 2.5mm, Wrench size for clamp 0.89mm



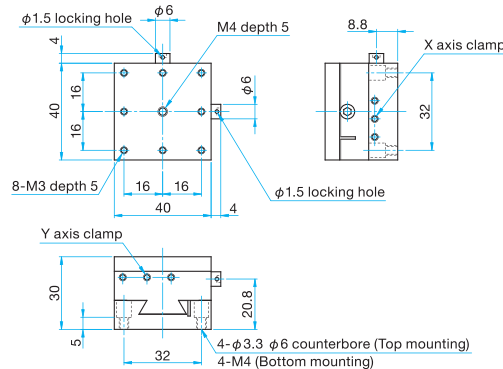
MLT22-25

- Pan head screw M2×6...3 screws, One 3mm hex wrench with knob, One 0.89mm hex wrench
 Wrench size for adjustment 3mm, Wrench size for clamp 0.89mm



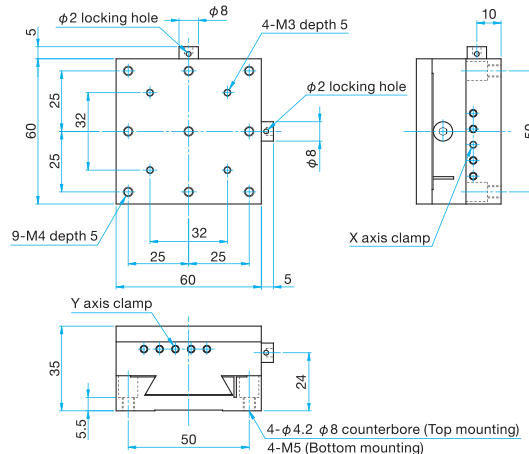
MLT22-40

- Pan head screw M3×8...4 screws, One 3mm hex wrench with knob, One 1.5mm hex wrench
 Wrench size for adjustment 3mm, Wrench size for clamp 1.5mm



MLT22-60

- Pan head screw M4×10...4 screws, One 3mm hex wrench with knob, One 1.5mm hex wrench
 Wrench size for adjustment 3mm, Wrench size for clamp 1.5mm



Application Systems

Machine Vision

Manual Positions

Motion Control Products

Optical & Mirror Holder

F A Parts

Measurement & Control

FA Electrical Parts

Tool & Measure

Cleanroom & AntiStatic

Index

X Axis

XY Axis

Z Axis

XZ Axis

XYZ Axis

Rotation

Goniometers /Tilt

Multiaxis

Linear Guide

□15mm

□25mm

□40mm

□50mm

□60mm

□70mm

□80mm

□100mm

□120mm

Others