

Single axis and three axis controllers for SFS series Piezo actuators.



FINE-01y



FINE-503(CL)

- Closed loop control with built in error compensation to correct hysteresis curve unique to each piezo.
- External control using a PC and manual operation with dedicated controller (CJ-200A).
- In addition to PC control and manual operation, the FINE-01y includes an analog signal input for high-speed analog control.

Part Name	Part Number
1 axis SFS Controller with Analog Input Function	FINE-01y(**)
3 axes SFS Controller	FINE-503(**)
Control Pad	CJ-200A
FINE Cable	FINE-CA-3
DS Cable	DS1-CA-3
BNC-BNC Cable	SKBNC-BNC-3.0

Primary Functions

Part Number	FINE-01y(**)	FINE-503(**)
Controller Function		○
Number of Control Axes	1	3
Stored Program Control		○
Feedback Control		Digital sensor

General Specifications

Power Voltage	(CL) AC100V ±10% (UL) AC120V ±10% (CE) AC230V ±10% 50/60Hz
Power Consumption	50VA
Operating Temperature	10 – 30°C
Storage Temperature	-20 – 60°C
Ambient Humidity	20 – 80%RH (without condensation)
External Dimensions (W×H×Dmm)	225×118×250 / 270×118×297
Weight (kg)	3.5 / 5.3

Interface

GP-IB	—	○
RS232C		○
USB		○
Analog input	○	—

Optional

CJ-200A		○
SKBNC-BNC-3.0	○	—

Performance Specifications

Coordinate Indication Range	±999,999nm
Max. Travel to Set	±999,999nm

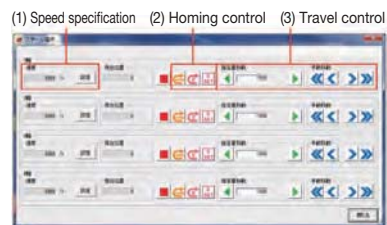
Control Command

Machine Origin Return	○
Theoretical Origin Setting	○
Relative Position Drive	○
Absolute Position Drive	○
Jog Operation	○
Position Appointment	—
Circular Interpolation Control	—
Linear Interpolation Control	—
Drive	○
Deceleration Stop	—
Emergency Stop	—
Speed Setting	○
Motor Free/Hold	—
Port Input	—
Port Output	—

SFS Software

Free Software | SG Sample (for RS232C) Windows® Version

Free software is available to operate your controller easily from a PC. Each axis of a connected motorized stage can be moved using buttons on the screen. The software can be downloaded from our website.



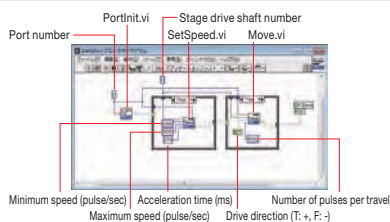
Simple operations are possible such as travel by specifying an axis, homing or jog operation.



Controllers such as SHOT-30*702 and FINE-**, which have a built-in program function, allow editing of programs from a PC. Since data can be downloaded/uploaded from/to Excel sheets, it is easy to edit programs. In addition, upload of memory switch or download mode is available.

Free Application
LabVIEW (for v.5.1/v.6i/v.7.1/v.8.6/v.2010/v.2012/v.2013/v.2014/v.2015) RS232C/GP-IB

LabVIEW application is available for LabVIEW users.



Other: 30 Day Trial Version (SGADVANCEE)

Using SGADVANCEE makes it possible to easily build measurement and control systems for a wide variety of measurement environments. Installing the trial version will require entering a serial number. The serial number for the trial version is shown on the download page.
[WEB Reference](http://www.global-optosigma.com/en_jp/software/product-download_en.html) http://www.global-optosigma.com/en_jp/software/product-download_en.html



Application Systems
Optics & Optical Coatings
Opto-Mechanics
Bases
Manual Stages
Actuators & Adjusters

Motoeized Stages

Light Sources & Laser Safety

Index

Guide

Controllers/Drivers

Softwares

Stepping Motor

AC Servo Motor

Cables

Piezo

X Translation

Theta Rotation

Goniometer

Vacuum

Options

40 × 40 mm

60 × 60 mm

80 × 80 mm

85 × 85 mm

100 × 100 mm

120 × 120 mm

Others